





SOUTHEASTERN SOIL & ENVIRONMENTAL ASSOC., INC.

PROPOSED SUBSURFACE WASTE DISPOSAL SYSTEM DETAIL SHEET

SUBDIVISION: OAKMONT

LOT 90

INITIAL SYSTEM: LOW PROFILE INFILTRATOR QUICKEY (CP)

REPAIR DRIP (IRRIGATION) <sup>NO</sup> PRETREAT

DISTRIBUTION: SERIAL

DISTRIBUTION TBD

BENCHMARK: 100.0

LOCATION RC 90/ROAD

NO. BEDROOMS: 4

LTAR 0.3 GPD/FT<sup>2</sup>

| LINE | FLAG COLOR | ELEVATION | LENGTH |
|------|------------|-----------|--------|
|------|------------|-----------|--------|

In. trial system

|   |   |        |             |
|---|---|--------|-------------|
| 1 | B | 115.34 | 60'         |
| 2 | P | 114.17 | 60'         |
| 3 | B | 112.84 | 60'         |
| 4 | P | 111.58 | 115'        |
| 5 | B | 110.17 | 90'         |
| 6 | P | 108.84 | 80'         |
| 7 | B | 107.42 | 50'         |
| 8 | P | 106.42 | 30'         |
|   |   |        | <u>545'</u> |

BY M EAKER

DATE 08/2015

TYPICAL PROFILE

- 0-10 gLs (VFr, w.g.)
- 10-26 s.c. (Fi, w.f.shk)
- 26+ pm (see write up)

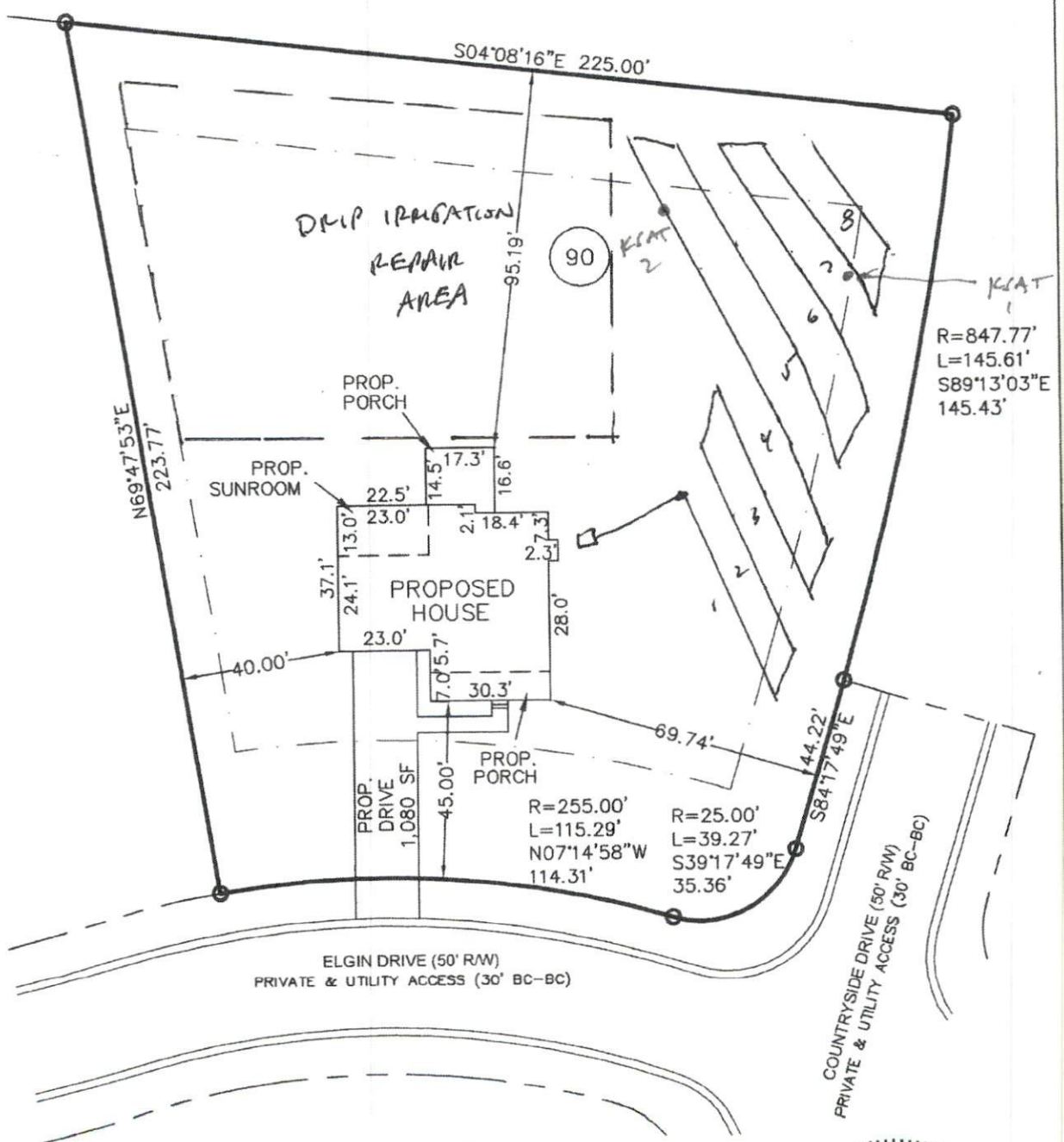
THERE SHALL BE NO GRADING, CUTTING, LOGGING OR OTHER SOIL DISTURBANCE IN SEPTIC AREA. DO NOT REMOVE ANY SOIL. CAREFUL CLEANING IS REQUIRED.

INSTALL AT 8" ON LOW SIDE  
 ADD 6" COVER WHERE REQUIRED  
 BY HEALTH DEPT.

# PROPOSED SEPTIC LAYOUT

N/F  
M & JM, LLC  
DB 2281, PG 145  
FUTURE DEVELOPMENT

(114)



## PLOT PLAN

**SUBDIVISION:** OAKMONT SUBDIVISION  
PHASE ONE  
SECTION THREE  
MB 2013, PG 346

**OWNER:** MCKEE HOMES, LLC

**SCALE:** 1" = 40'

\* DO NOT GRADE, CUT  
OR REMOVE ANY SOIL  
FROM SEPTIC (INITIAL  
OR REMAIN) AREAS





## Infiltrator Quick4 Plus Standard LP Chamber in North Carolina

The purpose of this product information sheet is to provide specific design and installation information pertinent for the use of Infiltrator Quick4 Plus Standard Low Profile (LP) chamber in North Carolina. Infiltrator products must be used in conjunction with the standards described in the North Carolina Rule 15A NCAV 18A.1900 and Infiltrator's innovative wastewater system approval ([www.deh.enr.state.nc.us](http://www.deh.enr.state.nc.us)). This document provides a brief description of the chamber and sizing specifications. For more detailed design information, please contact Infiltrator Systems at 1-800-221-4436.

The Quick4™ Plus Standard Low Profile (LP) chamber model can be installed in 36-inch-wide trench. The Quick4 Plus Standard LP chamber is 4 inches shorter than other standard models, allowing for shallower installation. The Quick4 Plus chamber offers advanced contouring capability and superior strength through its center structural columns.

The Quick4 Plus All-in-One Endcap and the Quick4 Plus Endcap are available with this chamber, providing increased flexibility in system configurations. The Quick4 Plus endcap systems allow multi-directional piping through several points and allows inletting at the top of the endcap. The Quick4 Plus Endcap can also be installed mid-line within a chamber row for center-fed beds or trenches.



QUICK4 PLUS STANDARD LP CHAMBER



QUICK4 ALL-IN-ONE ENDCAP

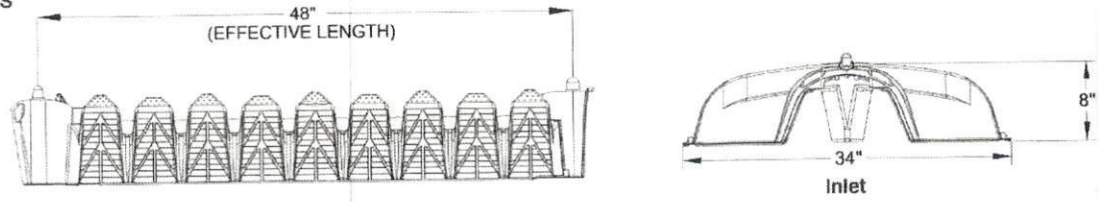


QUICK4 PLUS ENDCAP

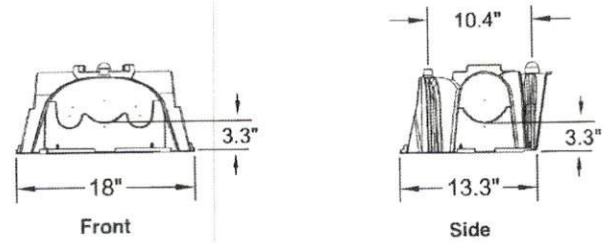
### Quick4 Plus Standard Low Profile (LP) Nominal Chamber Specifications

|                           |                  |
|---------------------------|------------------|
| Size (W x L x H)          | 34" x 48" x 8"   |
| Storage                   | 32 gal (4.3 ft³) |
| Equivalency Rating/Sizing | 3.0 ft²/lf       |

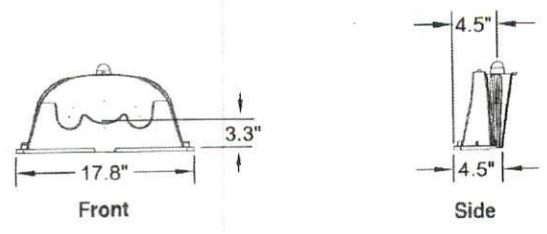
### QUICK4 PLUS STANDARD LP CHAMBER SIDE AND END VIEWS (Not to scale)



### QUICK4 PLUS ALL-IN-ONE ENDCAP SIDE AND END VIEWS (Not to scale)



### QUICK4 PLUS ENDCAP SIDE AND END VIEWS (Not to scale)



# Southeastern Soil & Environmental Associates, Inc.

P.O. Box 9321  
Fayetteville, NC 28311  
Phone/Fax (910) 822-4540  
Email mike@southeasternsoil.com

August 7, 2015

Harnett County Health Department  
307 Cornelius Harnett Blvd.  
Lillington, NC 27546

Re: Hydraulic conductivity (Ksat) analysis for proposed subsurface waste disposal system, Oakmont Subdivision, Lot 90, Harnett County, North Carolina

To whom it may concern,

An evaluation of soil and hydraulic conductivity (Ksat) has been conducted on the aforementioned property. The purpose of the investigation was to help determine soil absorption rates for a proposed low profile chamber septic system to serve a 4 bedroom single family residence. All ratings and determinations were made in accordance with "Laws and Rules for Sanitary Sewage Collection, Treatment, and Disposal, 15A NCAC 18A .1900".

Two compact constant head permeameter (CCHP) measurements were made to help determine a Ksat rate at depths of 23 (Bt) and 44 (C) inches. The Ksat measurement in the C horizon was 0.304 cm/hr. The measurement in the Bt horizon was 0.860 cm/hr. These equate to 1.79 and 5.06 gpd/sq.ft. Using 10% of this average in the Bt horizon (typical for systems without pretreatment), Ksat measurement equates to 0.51 gpd/sq.ft.

Our system is based on a proposed 0.30 gpd/sq. ft. which is considerably less than the measured rate. Based on our measurements (and assuming proper installation), the proposed rate should allow for sufficient drainage from the proposed system.

Sincerely,



Mike Eaker  
President

