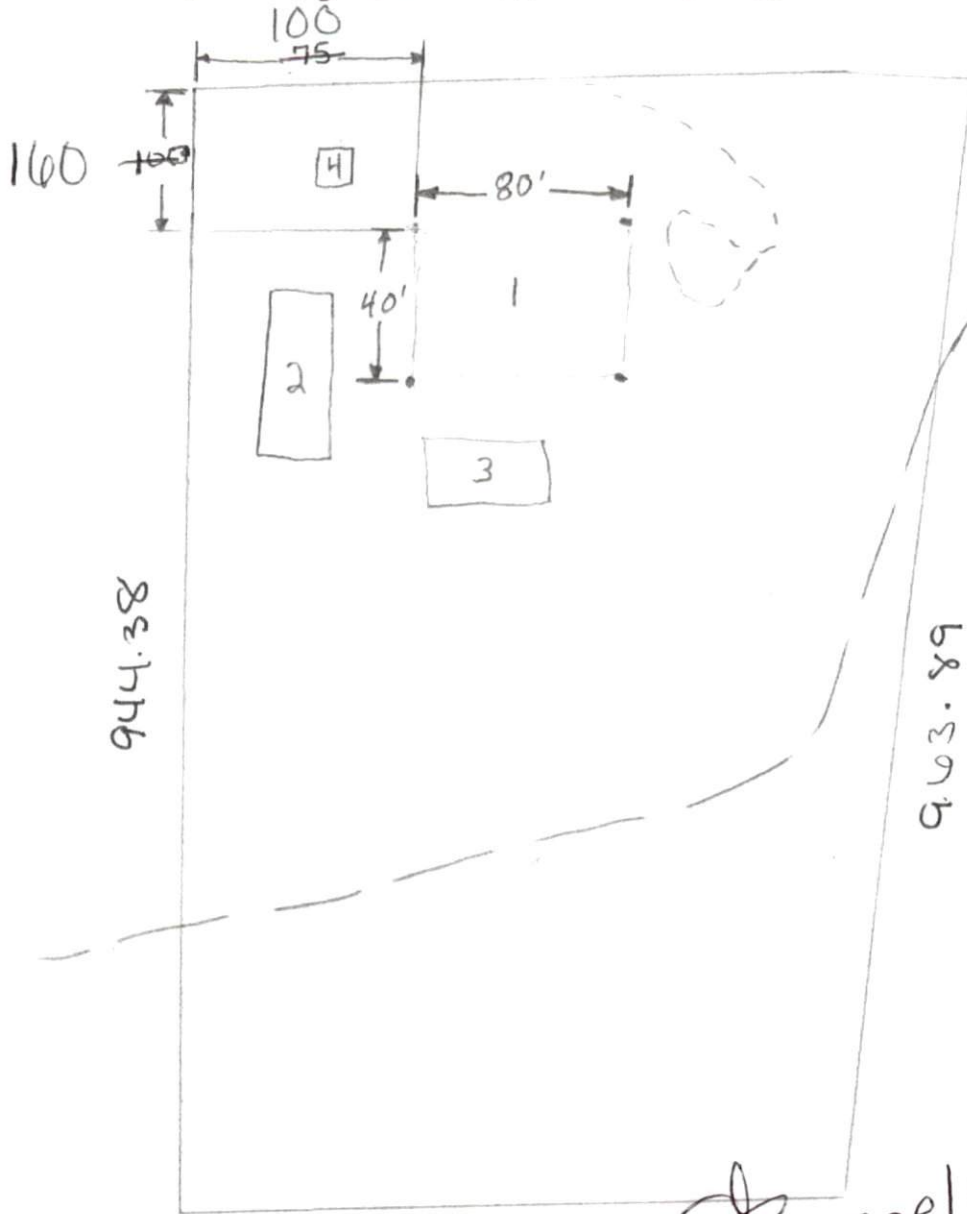


Melrose Chapel Church



- 1. 40'x80' Home
- 2. 40' Conex
- 3. Green house
- 4. Well
- Drive Way
- Stream

400.07 5/15/2003

~~6-20-15~~
 6-18-15
 #BEDROOMS 4
 DISTRICT R-3
 ZONING USE STD
 DATE 6-18-15
 Zoning Administrator

SITE PLAN APPROVAL



Not to Scale

ACRES TOTAL
ACRES in R/W
ACRES NET

WOOD
TRUST
97, Page 4

5
14.18 ACRES
3.85 ACRES NET

6
18.20 ACRES
15.90 ACRES NET

8
18.67 ACRES
15.89 ACRES NET

9
16.11 ACRES
8.44 ACRES NET

10
10.31 ACRES
9.87 ACRES NET

11
10.10 ACRES
9.85 ACRES NET

7
10.08 ACRES
9.74 ACRES NET

14
27.19 ACRES
25.77 ACRES NET

15
21.75 ACRES
21.21 ACRES NET

16
21.51 ACRES
21.00 ACRES NET

ERNEST J. HORTON

DAVID TEMPLE
Deed Book 754, Page 933

DARRELL
Deed Book 754,

HAROLD LLOYD
BRUNSON, SR.
Deed Book 1128, Page 128

EDWARD S. TURLIP
Deed Book 1128, Page 128
Deed Book 906, Page 128

LARRY R. PALMISTO
Deed Book 914, Page 128

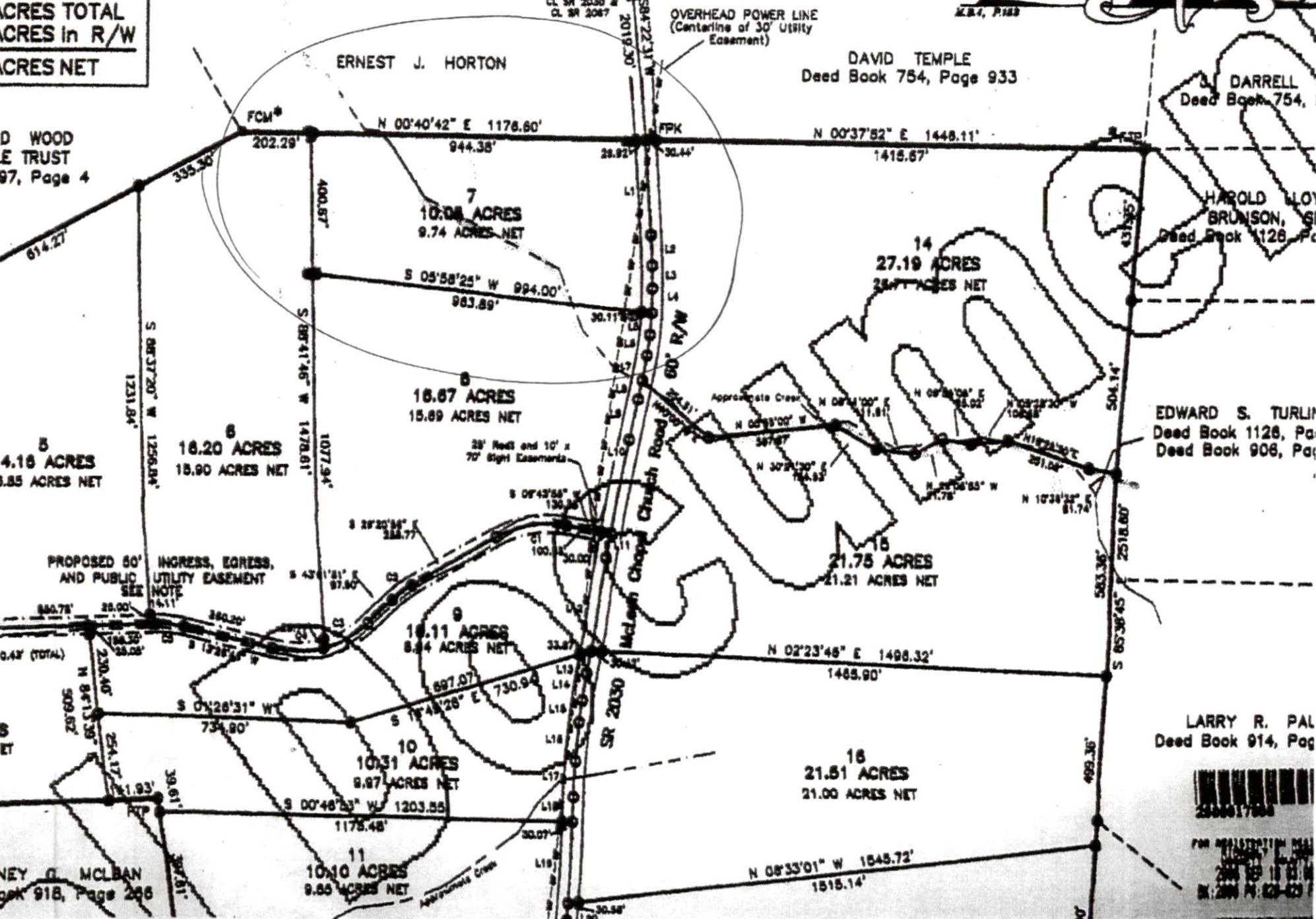
NEY G. MCLANAHAN
Deed Book 918, Page 266

FPK
CL SR 2030 &
CL SR 2087

OVERHEAD POWER LINE
(Centerline of 30' Utility
Easement)

M.B. 7, P. 163

McLain Chapel Church Road
SR 2030



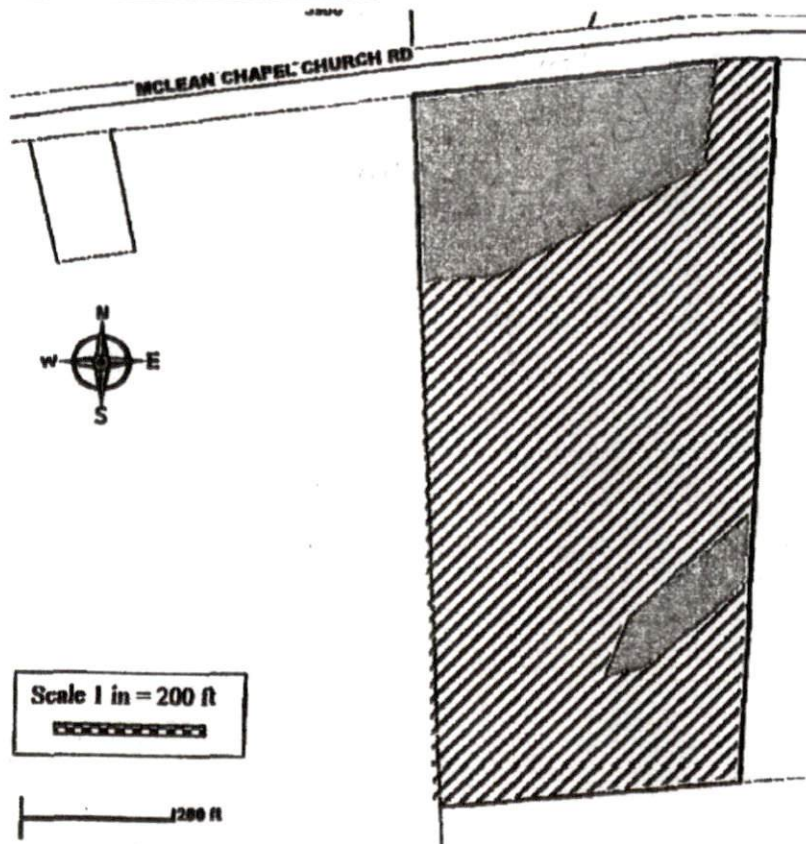
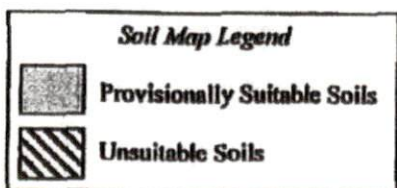
FOR REPRODUCTION ONLY
2000 10 13 01
BY 2000 10 13 01

HAL OWEN & ASSOCIATES, INC.

Preliminary Soil Investigation
Tract 7 Winston SD (10 Acres), PIN 0546-54-5917.000
26 March 2015



Soil Map



Soil Science Investigations • Wetland Delineations, Permitting, and Consulting