

COMMENTS: _____

<u>LANDSCAPE POSITIONS</u>	<u>GROUP</u>	<u>TEXTURES</u>	<u>.1955 LTAR</u>	<u>CONSISTENCE MOIST</u>	<u>WET</u>
R-RIDGE	I	S-SAND	1.2 - 0.8	VFR-VERY FRIABLE FR-FRIABLE FI-FIRM VFI-VERY FIRM EFI-EXTREMELY FIRM	NS-NON-STICKY SS-SLIGHTLY STICKY S-STICKY VS-VERY STICKY NP-NON-PLASTIC SP-SLIGHTLY STICKY P-PLASTIC VP-VERY PLASTIC
S-SHOULDER SLOPE		LS-LOAMY SAND			
L-LINEAR SLOPE					
FS-FOOT SLOPE	II	SL-SANDY LOAM	0.8 - 0.6		
N-NOSE SLOPE		L-LOAM			
H-HEAD SLOPE	III	SI-SILT	0.6 - 0.3		
CC-CONCLAVE SLOPE		SIL-SILT LOAM			
CV-CONVEX SLOPE		CL-CLAY LOAM			
T-TERRACE		SCL-SANDY CLAY LOAM			
FP-FLOOD PLAN	IV	SIC-SILTY CLAY	0.4 - 0.1		
		C-CLAY			
		SC-SANDY CLAY			

STRUCTURE

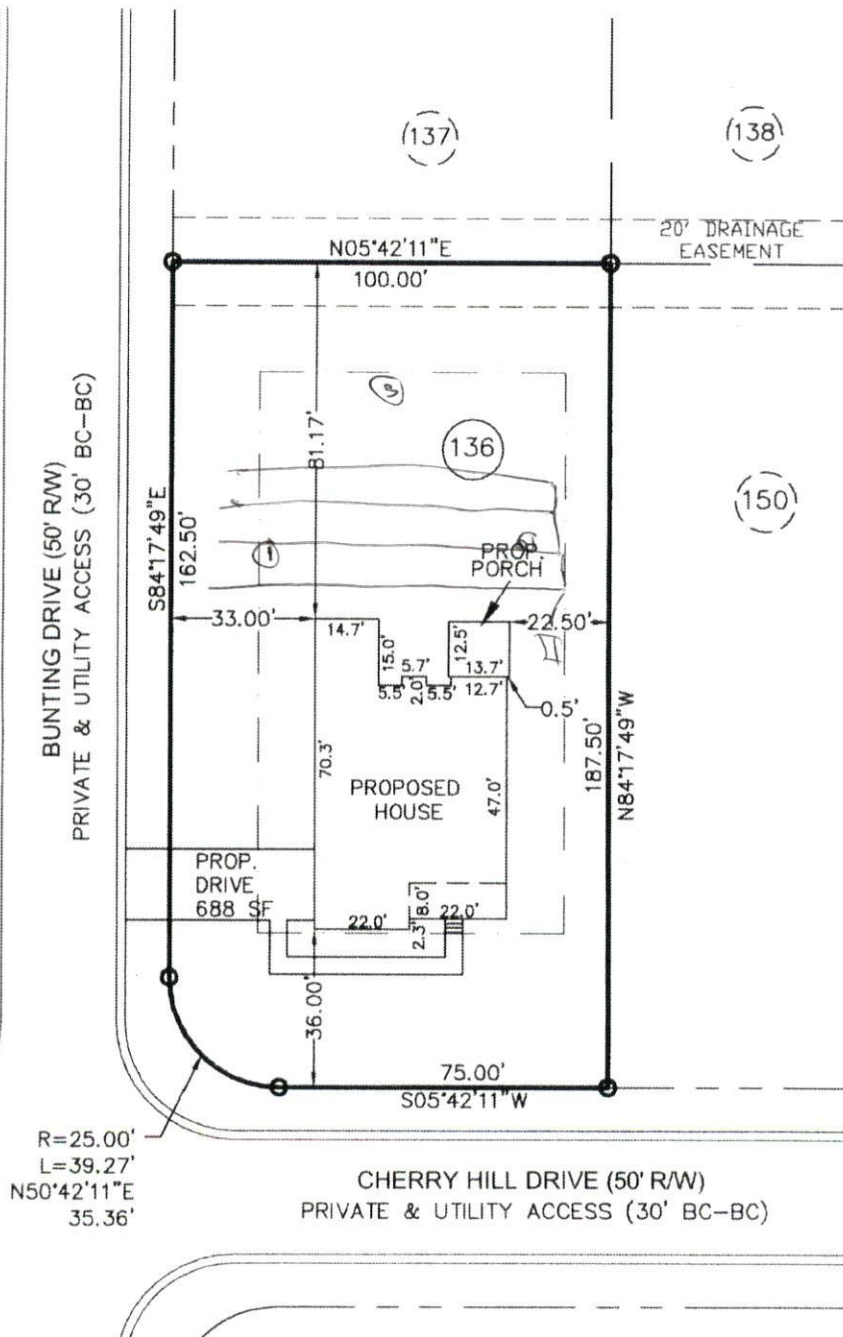
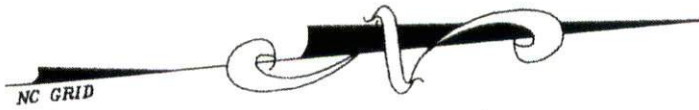
- SG-SINGLE GRAIN
- M- MASSIVE
- CR-CRUMB
- GR-GRANULAR
- SBK-SUBANGULAR BLOCKY
- ABK-ANGULAR BLOCKY
- PL-PLATY
- PR-PRISMATIC

MINERALOGY

- SLIGHTLY EXPANSIVE
- EXPANSIVE

Show profile locations and other site features (dimensions, references or benchmark, and North)

A large grid for recording profile locations and site features. The grid consists of 20 columns and 20 rows of empty cells, intended for drawing or recording site data.



PLOT PLAN

SUBDIVISION: OAKMONT SUBDIVISION
 PHASE ONE
 SECTION THREE
 MB 2013, PG 346

