

SOUTHEASTERN SOIL & ENVIRONMENTAL ASSOC., INC.

PROPOSED SUBSURFACE WASTE DISPOSAL SYSTEM DETAIL SHEET

SUBDIVISION: BALLARD WOODS

LOT 147

INITIAL SYSTEM: APPROVED 25% REDUCTION
pump to

REPAIR APPROVED 25% REDUCTION
pump to

DISTRIBUTION: SERIAL

DISTRIBUTION SERIAL

BENCHMARK: 100.0

LOCATION FC 147/148

NO. BEDROOMS: 4

LTAR 0.5 GPD/FTL

LINE FLAG COLOR ELEVATION LENGTH

Initial system

1	W	103.58	70'
2A	P	103.17	80'
3A	Y	102.67	90'
			<u>240'</u>

2B	P	103.17	100'
3B	Y	102.67	90'
4	W	102.50	70'
5	P	101.50	50'
			<u>310' AVAIL</u>

BY M EAKER

DATE 03/2015

TYPICAL PROFILE

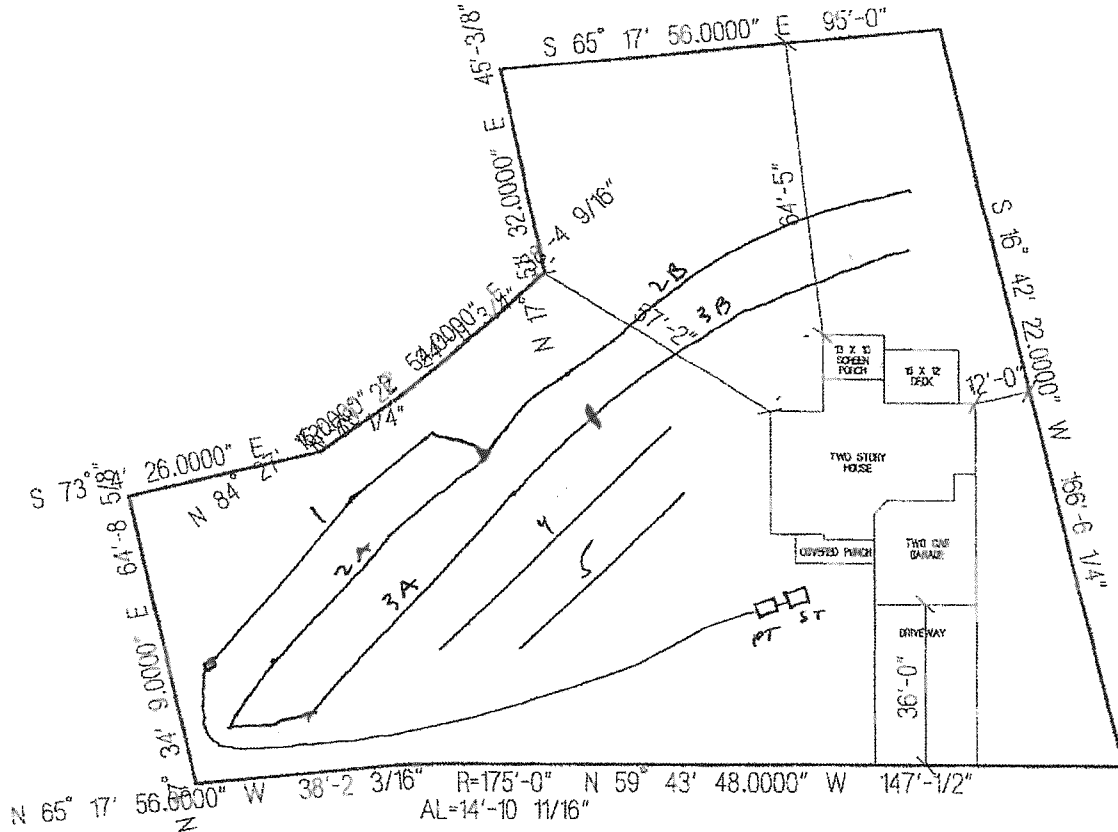
- 0-28 S/Ls (VF, w.g.)
- 28-40" sa (Fr, sh/c)
- Cr 2/Pm > 36"

THERE SHALL BE NO GRADING,
CUTTING, LOGGING OR OTHER SOIL
DISTURBANCE IN SEPTIC AREA

INSTALL AT 18-20"

SSA

PROPOSED SEPTIC LAYOUT



GWENDOLYN WAY

MILLENNIUM HOMES, LLC.
THE SIDNEY WITH SCREEN PORCH
LOT # 147 BALLARD WOODS
SCALE: 1"=40'

MIKE, see if this 4 Bedroom 2 story
will work on this lot