



VICINITY MAP

PLOT PLAN FOR
COMFORT HOMES
BLACK RIVER TOWNSHIP
HARNETT COUNTY
NORTH CAROLINA

NOTE: THIS PROPERTY IS SUBJECT TO
EASEMENTS AND RESTRICTIONS OF RECORD.
PRELIMINARY PLAT- NOT FOR RECORDATION,
CONVEYANCES, OR SALES.

NOTE: BEING LOT 19 OF STETSON SUBDIVISION,
RECORDED IN MAP NUMBER 2008 PGS. 193-196.

NOTE: AREA COMPUTED BY COORDINATE METHOD.

NOTE: NO NCGS CONTROL MONUMENT WITHIN 2000'.

NOTE: LOTS TO BE SERVED BY HARNETT COUNTY
WATER AND INDIVIDUAL SEPTIC SYSTEMS.

IMPERVIOUS SURFACE COVERAGE
1929 SQ.FT. - HOUSE & GARAGE
164 SQ.FT. - WALK & STEPS
665 SQ.FT. - DRIVEWAY
2758 TOTAL SQ.FT. - PROPOSED COVERAGE
9581 SQ.FT. - ALLOWABLE COVERAGE
6823 SQ.FT. - AVAILABLE COVERAGE


"I, Danny D. Williams, certify that this map was drawn under my supervision that the boundaries not surveyed and indicated as drawn from information in Map Number 2008, Pages 193-196, and that the ratio of precision or positional accuracy is sufficient and that this map meets the requirements of The Standard and Code of Professional Land Surveying in North Carolina (21 NCAC 15.1800).

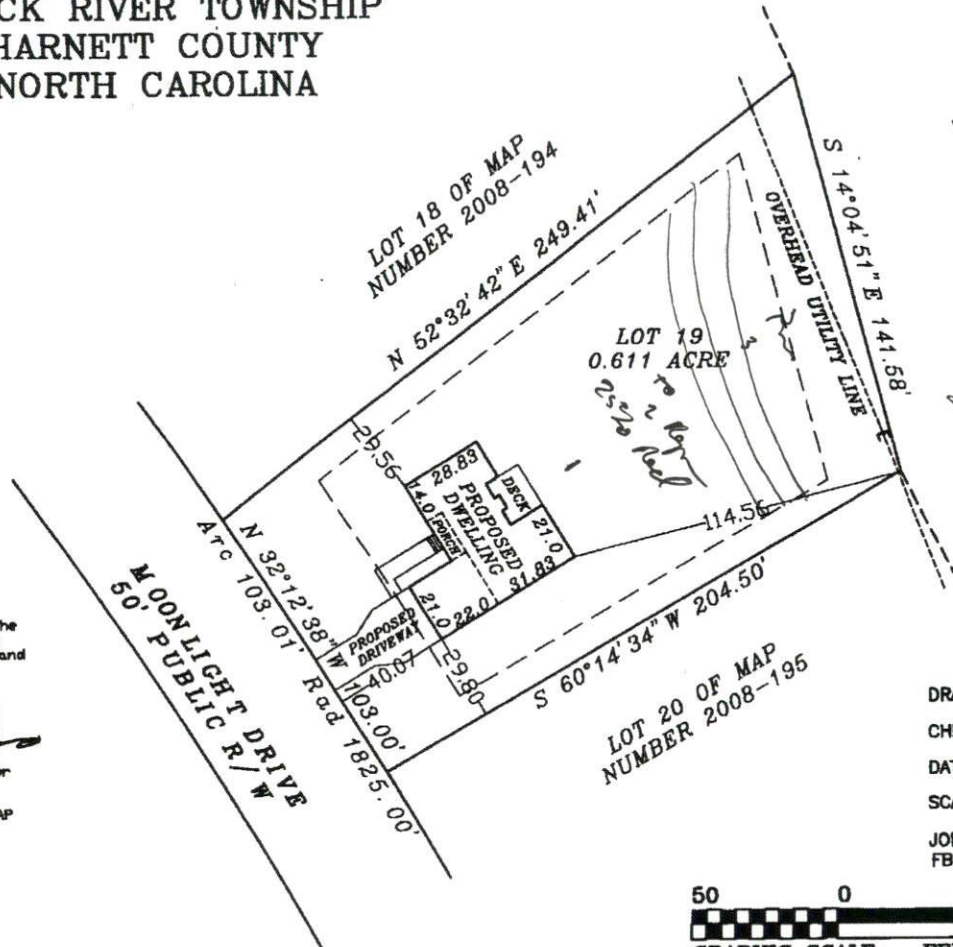
This 2nd day of JULY, 2014.

Seal



NOTE: NOT AN ACTUAL FIELD SURVEY. INFORMATION TAKEN FROM MAP NUMBER 2008 PGS 193-195.

WILLIAMS - PEARCE and ASSOC.,
PROFESSIONAL LAND SURVEYORS, P.A. 
1000 N. ARENDELL AVE.
P.O. BOX 892, ZEBULON, N.C. 27597
PHONE: 919-269-9605 LIC. # C-0243



DEED NORTH 1841 PG 632
MARIE COBLE
DB 745 PG 389



DRAWN BY: DOW & BGW
CHECKED BY: DOW
DATE: 07-02-2014
SCALE: 1" = 50'
JOB: STETSON CF
FB:

