



COMMENTS: \_\_\_\_\_

<u>LANDSCAPE POSITIONS</u>	<u>GROUP</u>	<u>TEXTURES</u>	<u>.1955 LTAR</u>	<u>CONSISTENCE MOIST</u>	<u>WET</u>
R-RIDGE	I	S-SAND	1.2 - 0.8	VFR-VERY FRIABLE	NS-NON-STICKY
S-SHOULDER SLOPE		LS-LOAMY SAND			
L-LINEAR SLOPE	II	SL-SANDY LOAM	0.8 - 0.6	FR-FRIABLE	SS-SLIGHTY STICKY
FS-FOOT SLOPE		L-LOAM			
N-NOSE SLOPE	III	SI-SILT	0.6 - 0.3	FI-FIRM	S-STICKY
H-HEAD SLOPE		SIL-SILT LOAM			
CC-CONCLAVE SLOPE		CL-CLAY LOAM			
CV-CONVEX SLOPE		SCL-SANDY CLAY LOAM			
T-TERRACE	IV	SIC-SILTY CLAY	0.4 - 0.1	VFI-VERY FIRM	VS-VERY STICKY
FP-FLOOD PLAN		C-CLAY			
		SC-SANDY CLAY		EFI-EXTREMELY FIRM	NP-NON-PLASTIC
					SP-SLIGHTLY STICKY
					P-PLASTIC
					VP-VERY PLASTIC

STRUCTURE

- SG-SINGLE GRAIN
- M- MASSIVE
- CR-CRUMB
- GR-GRANULAR
- SBK-SUBANGULAR BLOCKY
- ABK-ANGULAR BLOCKY
- PL-PLATY
- PR-PRISMATIC

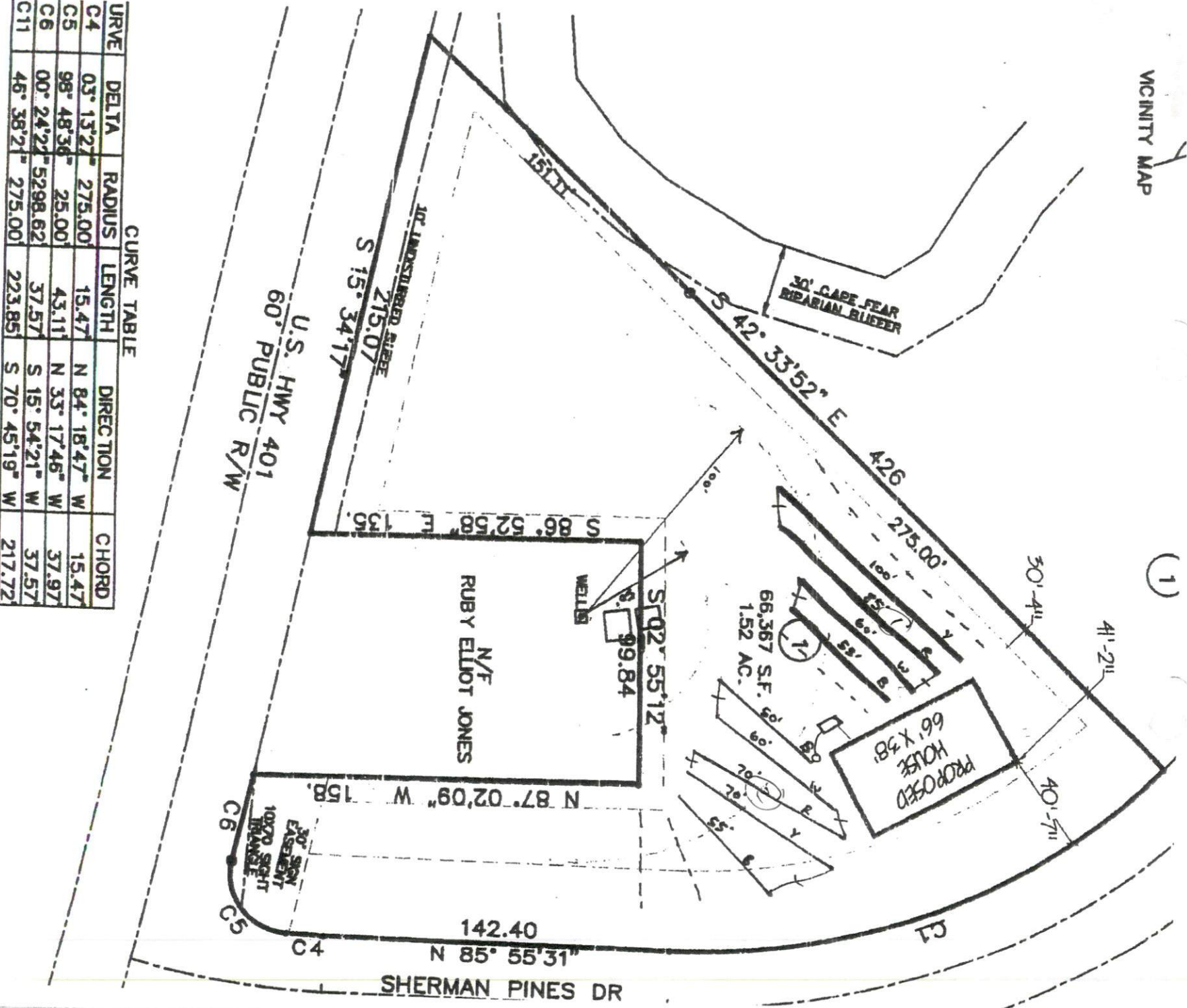
MINERALOGY

- SLIGHTLY EXPANSIVE
- EXPANSIVE

Show profile locations and other site features (dimensions, references or benchmark, and North)

A large grid for site profile and feature recording, consisting of 20 columns and 20 rows of empty cells.

(1)



CURVE TABLE

CURVE	DELTA	RADIUS	LENGTH	DIRECTION	CHORD
C4	03° 15' 27"	275.00'	15.47'	N 84° 18' 47" W	15.47'
C5	98° 48' 36"	25.00'	43.11'	N 33° 17' 46" W	37.97'
C6	00° 24' 22"	5298.62'	37.57'	S 15° 54' 21" W	37.57'
C11	48° 38' 21"	275.00'	223.85'	S 70° 45' 19" W	217.72'