



COMMENTS: \_\_\_\_\_

<u>LANDSCAPE POSITIONS</u>	<u>GROUP</u>	<u>TEXTURES</u>	<u>.1955 LTAR</u>	<u>CONSISTENCE MOIST</u>	<u>WET</u>
R-RIDGE	I	S-SAND	1.2 - 0.8	VFR-VERY FRIABLE FR-FRIABLE FI-FIRM VFI-VERY FIRM EFI-EXTREMELY FIRM	NS-NON-STICKY SS-SLIGHTY STICKY S-STICKY VS-VERY STICKY NP-NON-PLASTIC SP-SLIGHTLY STICKY P-PLASTIC VP-VERY PLASTIC
S-SHOULDER SLOPE		LS-LOAMY SAND			
L-LINEAR SLOPE	II	SL-SANDY LOAM	0.8 - 0.6		
FS-FOOT SLOPE		L-LOAM			
N-NOSE SLOPE	III	SI-SILT	0.6 - 0.3		
H-HEAD SLOPE		SIL-SILT LOAM			
CC-CONCLAVE SLOPE		CL-CLAY LOAM			
CV-CONVEX SLOPE		SCL-SANDY CLAY LOAM			
T-TERRACE	IV	SIC-SILTY CLAY	0.4 - 0.1		
FP-FLOOD PLAN		C-CLAY			
		SC-SANDY CLAY			

STRUCTURE  
 SG-SINGLE GRAIN  
 M- MASSIVE  
 CR-CRUMB  
 GR-GRANULAR  
 SBK-SUBANGULAR BLOCKY  
 ABK-ANGULAR BLOCKY  
 PL-PLATY  
 PR-PRISMATIC

MINERALOGY  
 SLIGHTLY EXPANSIVE  
 EXPANSIVE

Show profile locations and other site features (dimensions, references or benchmark, and North)

A large grid for recording profile locations and site features. The grid consists of 20 columns and 20 rows, providing a structured area for data entry.



VICINITY MAP (NTS)

- LEGEND**
- AC=AIR CONDITIONING UNIT
  - BOC=BACK OF CURB
  - DW=CONC DRIVEWAY
  - EB=ELECTRIC BOX
  - EOP=EDGE OF PAVEMENT
  - P=PATIO
  - PO=PORCH
  - SCO=CLEANOUT
  - SW=SIDEWALK
  - TP=TELEPHONE PEDESTAL
  - WM=WATER METER
  - IRON PIPE FOUND
  - IRON PIPE SET
  - NAIL SET

**SETBACKS**

FRONT	35'
SIDE	10'
REAR	25'
SIDE STREET	20'

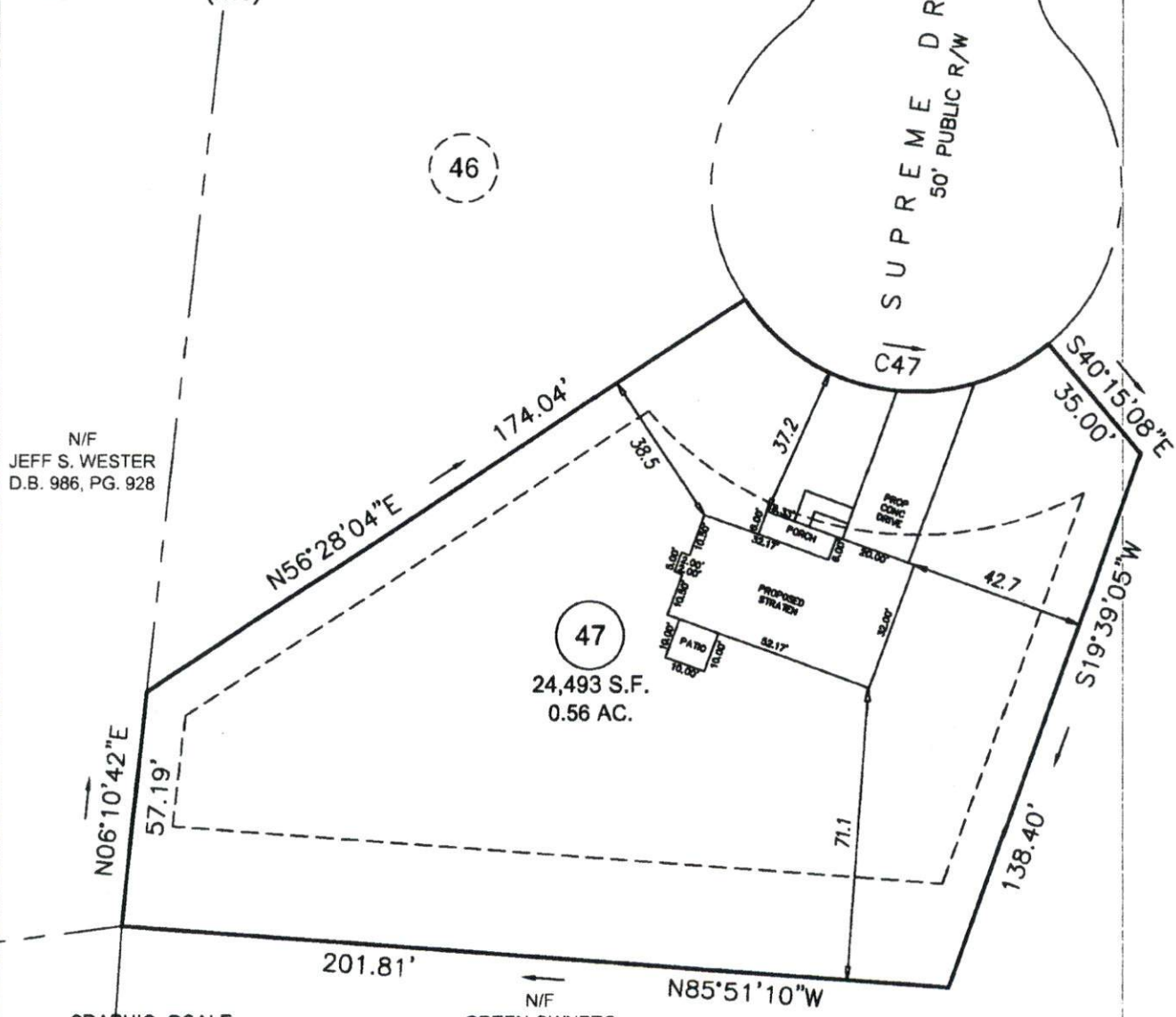
**IMPERVIOUS AREA**

HOUSE	1,597 SQ.FT.
DRIVE	714 SQ.FT.
WALK	67 SQ.FT.
PATIO	100 SQ.FT.
<b>TOTAL</b>	<b>2,478 SQ.FT.</b>

THIS SURVEY IS OF AN EXISTING PARCEL OR PARCELS OF LAND AND DOES NOT CREATE A NEW STREET OR CHANGE AN EXISTING STREET.

SHAWN T. RUMBERGER, PLS L-4909 DATE

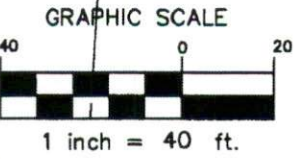
THIS MAP IS ONLY INTENDED FOR THE PARTIES AND PURPOSES SHOWN. THIS MAP IS NOT FOR RECORDATION. NO TITLE REPORT PROVIDED.



N/F  
JEFF S. WESTER  
D.B. 986, PG. 928

46

47  
24,493 S.F.  
0.56 AC.



N/F  
GREEN OWNERS  
ASSOCIATION INC  
D.B. 2292, PG. 588

**P R E L I M I N A R Y  
P L O T   P L A N**

PROJECT:	14-005
DRAWN BY:	LLL
SCALE:	1"=40'
DATE:	05-05-2014

FOR  
**GARY ROBINSON HOMES**  
SUPREME DRIVE  
LOT 47 THE PLANTATION AT VINEYARD GREEN SUBDIVISION  
NEILL'S CREEK TWP., HARNETT CO., NC  
P.B. 2004, PG. 904

**ECLS**  
SURVEYING THE EAST COAST  
227 FISH DRIVE  
ANGIER, NC 27501  
910.897.3257  
910.897.2329 (FAX)  
ECLSBINC.COM



SOUTHEASTERN SOIL & ENVIRONMENTAL ASSOC., INC.

PROPOSED SUBSURFACE WASTE DISPOSAL SYSTEM DETAIL SHEET

SUBDIVISION PLANTATION AT VINEYARD GREEN LOT 47  
 INITIAL SYSTEM PUMP TO APPROX 25% REDUCTION REPAIR PUMP TO APPROX 25% REDUCTION  
 DISTRIBUTION SEMI DISTRIBUTION TBD  
 BENCHMARK 100.0 LOCATION R/C 46/47  
 NO. BEDROOMS 3 PROPOSED LTAR 0.3 GPD/FT<sup>2</sup>

LINE	FLAG COLOR	ELEVATION	LENGTH (FT)
1	B	97.67	45'
2	P	97.08	50'
3	B	96.08	55'
4	P	95.08	70'
5	B	93.25	80'
			<u>300'</u>
6	P	92.50	85'
7	B	91.00	100'
8	P	89.67	100'
9	B	88.25	110'
			<u>300' TOTAL</u>

In total

BY MEAKER

DATE 07/2014

TYPICAL PROFILE  
 0-10 g/s (1/2" w/c)  
 10-24" clay (P, R/C)  
 PM/CAL > 36"  
 INITIAL AT 19"

or  
928  
66-A

N 06°10'42"E 38'

46

0.475 Ac.

C-15

R=50.00'

L=84.40'

(74.73')

(S 77°08'21"E)

S 40°15'08"E  
35.00'

See Sheet Two  
for Match L

Control Point  
Iron Bar

47

0.631 Ac.

138.40'  
S 19°39'05"W

201.81'

N 85°51'10"W

Ronald E. Johnson  
D. B. 815, Pg. 485

r  
167

SEE SHEET TWO OF TWO  
FOR CERTIFICATIONS AND  
SIGNATURES OF APPROVAL.

1" = 50'

Revis

Update cert  
revise Lots 45-

50 0