

COMMENTS: _____

LANDSCAPE POSITIONS

- R-RIDGE
- S-SHOULDER SLOPE
- L-LINEAR SLOPE
- FS-FOOT SLOPE
- N-NOSE SLOPE
- H-HEAD SLOPE
- CC-CONCLAVE SLOPE
- CV-CONVEX SLOPE
- T-TERRACE
- FP-FLOOD PLAN

GROUP	TEXTURES	.1955 LTAR
I	S-SAND LS-LOAMY SAND	1.2 - 0.8
II	SL-SANDY LOAM L-LOAM	0.8 - 0.6
III	SI-SILT SIL-SILT LOAM CL-CLAY LOAM SCL-SANDY CLAY LOAM	0.6 - 0.3
IV	SIC-SILTY CLAY C-CLAY SC-SANDY CLAY	0.4 - 0.1

CONSISTENCE MOIST

- VFR-VERY FRIABLE
- FR-FRIABLE
- FI-FIRM
- VFI-VERY FIRM
- EFI-EXTREMELY FIRM

WET

- NS-NON-STICKY
- SS-SLIGHTLY STICKY
- S-STICKY
- VS-VERY STICKY
- NP-NON-PLASTIC
- SP-SLIGHTLY STICKY
- P-PLASTIC
- VP-VERY PLASTIC

STRUCTURE

- SG-SINGLE GRAIN
- M-MASSIVE
- CR-CRUMB
- GR-GRANULAR
- SBK-SUBANGULAR BLOCKY
- ABK-ANGULAR BLOCKY
- PL-PLATY
- PR-PRISMATIC

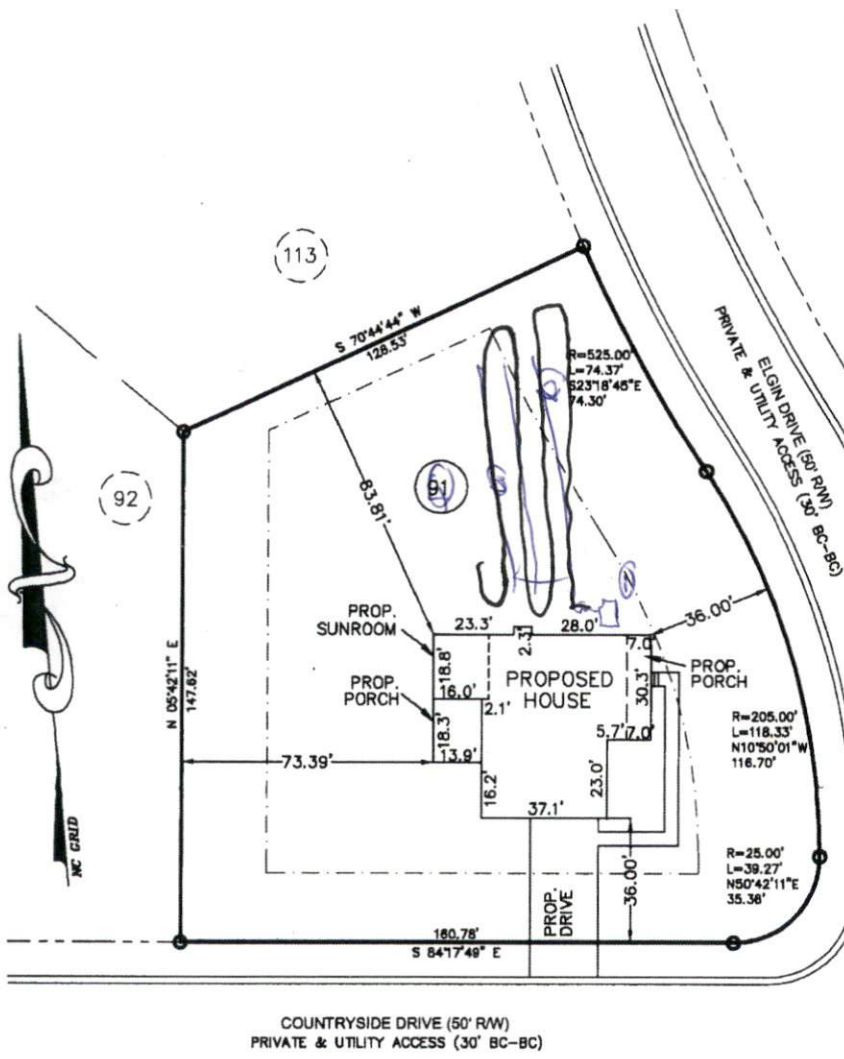
MINERALOGY

- SLIGHTLY EXPANSIVE
- EXPANSIVE

Show profile locations and other site features (dimensions, references or benchmark, and North)

A large grid for recording profile locations and site features. The grid is approximately 20 columns wide and 25 rows high. It is intended for drawing or marking profile locations, dimensions, references, benchmarks, and orientation (North).

HOUSE PLAN: BEAUFORT - ELEV B W/GUEST SUITE & SUNROOM



PLOT PLAN

SUBDIVISION: OAKMONT SUBDIVISION
 PHASE ONE
 SECTION THREE
 MB 2013, PG 346

OWNER: MCKEE HOMES, LLC

SCALE: 1" = 40'



The design for the proposed sewage disposal system _____ approved.

Sanitarian Supervisor
 Harnett County Health Dept.

Date _____

Averette Engineering Co., P.A.
 Established 1970

CIVIL ENGINEERING
 LAND SURVEYING
 PLANNING

Address:
 712 E. Lake Ridge Road
 Raeford, NC 28376

Phone: (910) 488-5656
 Fax: (910) 488-0181
 License: C-0146
 Web: www.averette-eng.com

Michael D. Averette

Michael D. Averette PE-021411
 Professional Engineer

MARCH 10, 2014

Date _____

PPLAN127H