

145 00 32 95! R Info

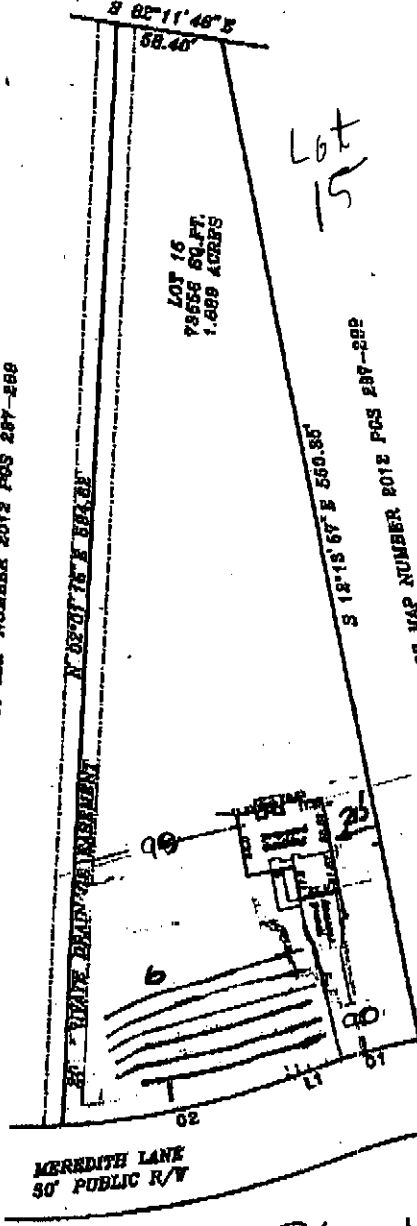
NOW OR FORMERLY PRESTON E. STROUD, ET AL. DB 1605 PG 350 MAP 3 88-548

Curve	Radius	Length	Chord	Chord Bkt
G1	583.00'	648.03'	55.88'	8 74° 57' 12"
G2	488.00'	385.27'	122.85'	8 77° 52' 51"

PLAT NORTH
PLAT CAB. F SLIDE 170-B



LOT 14 OF MAP NUMBER 2012 PGS 287-288



Lot 15

- 1-T-100
- 2-R-180
- 3-T-100
- 4-R-120
- 5-B-120
- 6-D-120

initial - W 30"
reserve # grade - N 26"

*pumped conventional

PLOT PLAN FOR
COMFORT HOMES
HECTOR'S CREEK TOWNSHIP
HARNETT COUNTY
NORTH CAROLINA



REDELL II

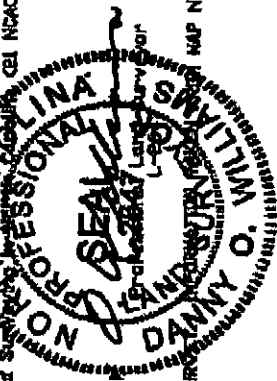
NOTE: THIS PROPERTY IS SUBJECT TO EASEMENTS AND RESTRICTIONS OF RECORD. PRELIMINARY PLAT - NOT FOR RECORDATION, CONVEYANCES, OR SALES.

IMPERVIOUS SURFACE COVERAGE
1996 SQ.FT. - HOUSE, PORCH & GARAGE
1131 SQ.FT. - WALK & DRIVEWAY
3121 TOTAL SQ.FT. - PROPOSED COVERAGE
PERCENTAGE OF LOT COVERED - 4.2%

360gpd
LVAR - 0.35 - Initial & Repair

MEREDITH'S STATION,
2012, PAGES 297-299.
BY COORDINATE METHOD.
WITHIN 2000' HAVE

* This map was drawn under my supervision. I have indicated therefrom information in that I have been furnished or obtained for making this map. I am a member of the North Carolina Professional Surveyors' Association, Inc. (N.C. PS.A.) and am duly licensed under the laws of the State of North Carolina, License No. 55160001.



DANNY O. WHITTEM
ASSOC.,
SURVEYORS, P.A. WA

N, N.C. 27597
LIC # C-0243