



COMMENTS: \_\_\_\_\_

LANDSCAPE POSITIONS

R-RIDGE  
 S-SHOULDER SLOPE  
 L-LINEAR SLOPE  
 FS-FOOT SLOPE  
 N-NOSE SLOPE  
 H-HEAD SLOPE  
 CC-CONCLAVE SLOPE  
 CV-CONVEX SLOPE  
 T-TERRACE  
 FP-FLOOD PLAN

GROUP	TEXTURES	.1955 LTAR
I	S-SAND LS-LOAMY SAND	1.2 - 0.8
II	SL-SANDY LOAM L-LOAM	0.8 - 0.6
III	SI-SILT SIL-SILT LOAM CL-CLAY LOAM SCL-SANDY CLAY LOAM	0.6 - 0.3
IV	SIC-SILTY CLAY C-CLAY SC-SANDY CLAY	0.4 - 0.1

CONSISTENCE MOIST

VFR-VERY FRIABLE  
 FR-FRIABLE  
 FI-FIRM  
 VFI-VERY FIRM  
 EFI-EXTREMELY FIRM

WET

NS-NON-STICKY  
 SS-SLIGHTY STICKY  
 S-STICKY  
 VS-VERY STICKY  
 NP-NON-PLASTIC  
 SP-SLIGHTLY STICKY  
 P-PLASTIC  
 VP-VERY PLASTIC

STRUCTURE

SG-SINGLE GRAIN  
 M-MASSIVE  
 CR-CRUMB  
 GR-GRANULAR  
 SBK-SUBANGULAR BLOCKY  
 ABK-ANGULAR BLOCKY  
 PL-PLATY  
 PR-PRISMATIC

MINERALOGY

SLIGHTLY EXPANSIVE  
 EXPANSIVE

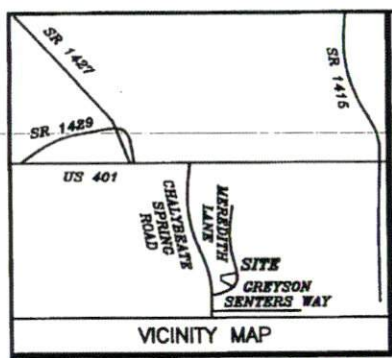
Show profile locations and other site features (dimensions, references or benchmark, and North)

A large grid for recording site profile locations and other site features. The grid consists of 20 columns and 20 rows of squares. The top row is partially filled with a header label: "Show profile locations and other site features (dimensions, references or benchmark, and North)".

810  
021 X 2

Curve	Radius	Length	Chord	Chord Bear.
C1	285.00'	183.77'	180.60'	S 48°31'16" E
C2	25.00'	43.57'	38.26'	S 19°52'30" W

Course	Bearing	Distance
L1	S 69°47'56" W	7.40'
L2	S 69°55'49" W	87.62'



NOTE: THIS PROPERTY IS SUBJECT TO EASEMENTS AND RESTRICTIONS OF RECORD.  
 PRELIMINARY PLAT- NOT FOR RECORDATION, CONVEYANCES, OR SALES.

IMPERVIOUS SURFACE COVERAGE  
 1801 SQ.FT. - HOUSE, PORCH & GARAGE  
 891 SQ.FT. - WALK & DRIVEWAY  
 2692 TOTAL SQ.FT. - PROPOSED COVERAGE  
 PERCENTAGE OF LOT COVERED -10.7 %

NOW OR FORMERLY LEVY B. MATTHEWS HEIRS  
 DB 229 PG 384

NOTE: BEING LOT 1 OF MEREDITH'S STATION, RECORDED IN MAP BOOK 2012, PAGES 297-299.

NOTE: AREA COMPUTED BY COORDINATE METHOD.

NOTE: NCGS MONUMENT WITHIN 2000' HAVE BEEN DESTROYED.

"I, Danny O. Williams, certify that this map was drawn under my supervision that the boundaries not surveyed are indicated as drawn from information in Map Number 2012 Pages 297-299 and that the ratio of precision or positional accuracy is 1/10,000 and that this map meets the requirements of The Standards of Practice for Land Surveying in North Carolina G21 NCAC 56.1600."

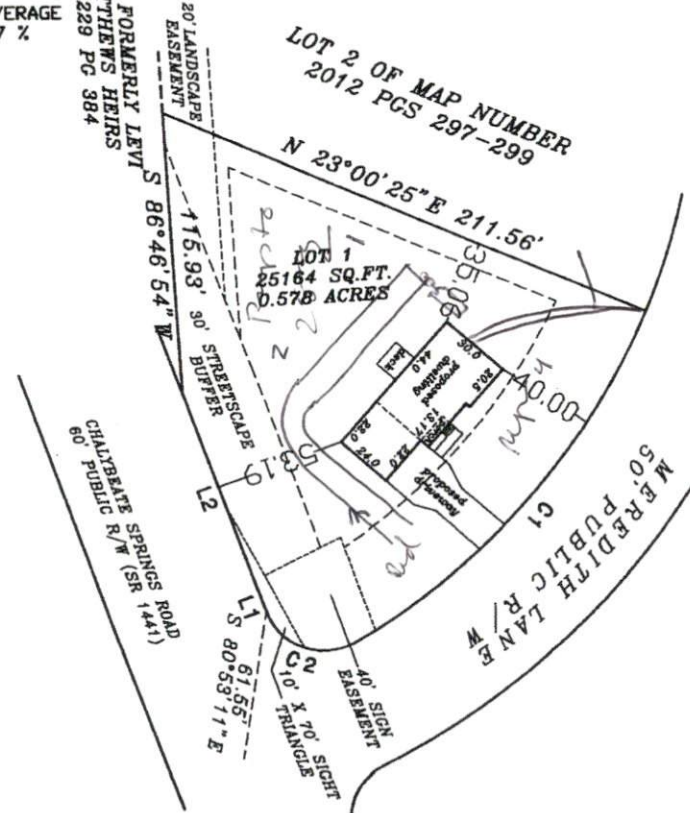
This 28th day of January, 2014

Seal  
 Danny O. Williams  
 Professional Land Surveyor

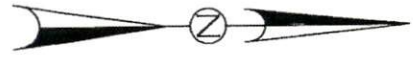


NOTE: NOT AN ACTUAL FIELD SURVEY INFORMATION TAKEN FROM MAP NUMBER 2012 PAGES 297-298.

**WILLIAMS - PEARCE and ASSOC.,**  
**PROFESSIONAL LAND SURVEYORS, P.A.**  
 1000 N. ARENDELL AVE.  
 P.O. BOX 892, ZEBULON, N.C. 27597  
 PHONE: 919-269-9605 LIC. # C-0243



PLAT NORTH  
 PLAT CAB. F SLIDE 170-B



LOT PLAN FOR  
 COMFORT HOMES  
 HECTOR'S CREEK TOWNSHIP  
 HARNETT COUNTY  
 NORTH CAROLINA

DRAWN BY: DJW & BGW  
 CHECKED BY: DJW  
 DATE: 01-28-2014  
 SCALE: 1" = 60'  
 JOB: MERED CF  
 FB:

