





PRELIMINARY PLOT PLAN FOR  
**LAWRENCE HOMES**

LOT 20, NEILLS CREEK FARMS  
HIGHMEADOW DRIVE  
REF: PLAT CABINET C, SLIDE 124-C  
BLACK RIVER TOWNSHIP  
HARNETT COUNTY, NORTH CAROLINA

NOVEMBER 21, 2013  
REVISED NOVEMBER 22, 2013  
REVISED NOVEMBER 26, 2013

ZONED RA 40



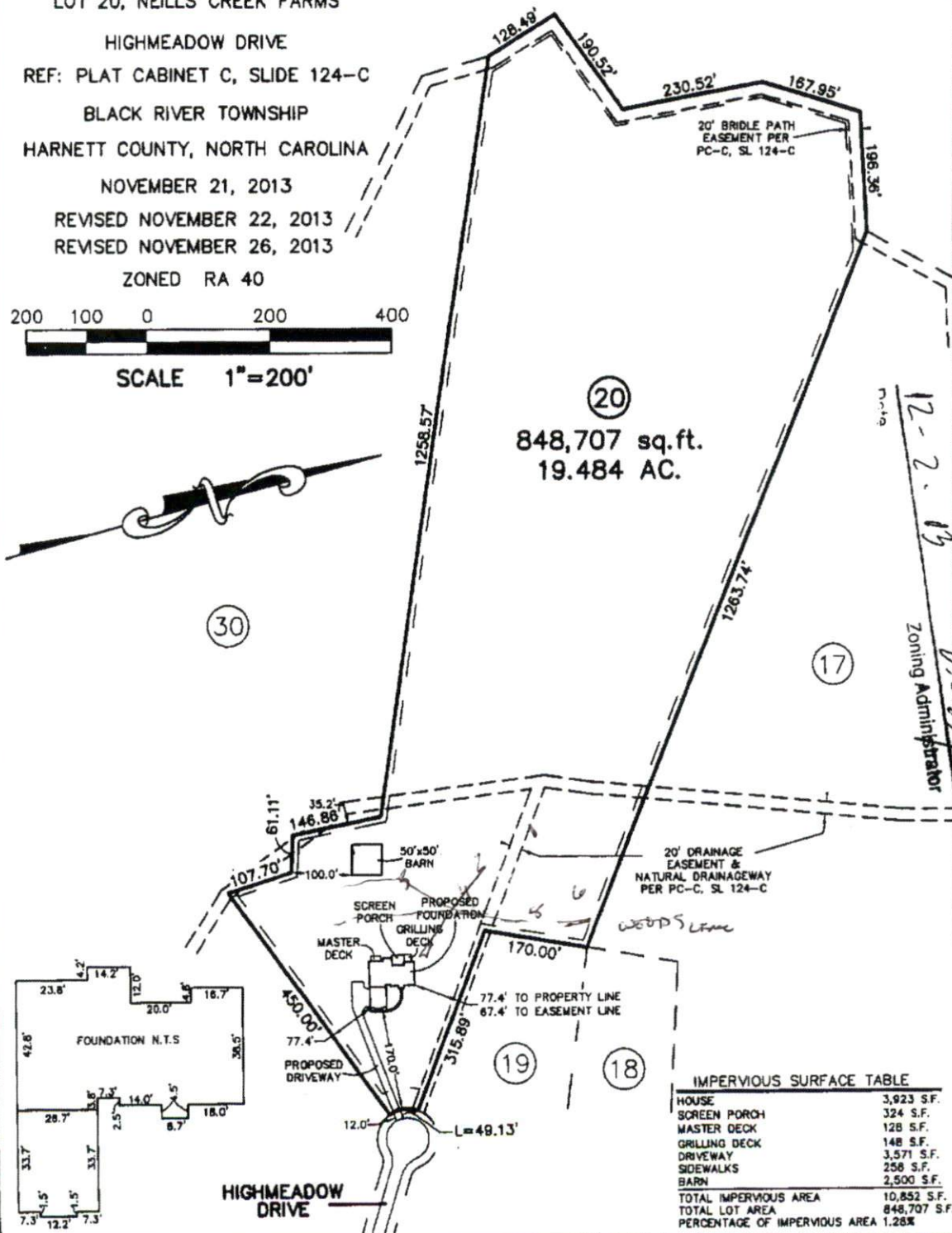
SCALE 1"=200'



MINIMUM BUILDING SETBACKS

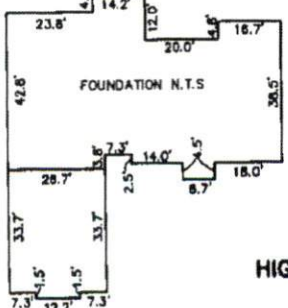
FRONT	35'
REAR	25'
SIDE	10'

THIS SURVEYOR DOES NOT  
WARRANTY THE ACCURACY  
OF ARCHITECTURAL DIMENSIONS.  
THEY ARE TO BE VERIFIED BY  
THE CONTRACTOR.



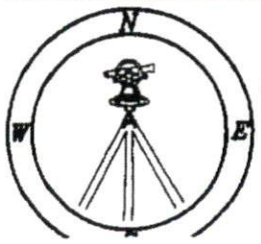
②①  
848,707 sq.ft.  
19.484 AC.

SITE PLAN APPROVAL  
 DISTRICT RA 40 USE SEP  
 #BEDROOMS 4  
 Zoning Administrator



IMPERVIOUS SURFACE TABLE

HOUSE	3,923 S.F.
SCREEN PORCH	324 S.F.
MASTER DECK	128 S.F.
GRILLING DECK	148 S.F.
DRIVEWAY	3,571 S.F.
SIDEWALKS	258 S.F.
BARN	2,500 S.F.
<b>TOTAL IMPERVIOUS AREA</b>	<b>10,852 S.F.</b>
<b>TOTAL LOT AREA</b>	<b>848,707 S.F.</b>
<b>PERCENTAGE OF IMPERVIOUS AREA</b>	<b>1.28%</b>



**CAWTHORNE, MOSS & PANCIERA, P.C.**  
Professional Land Surveyors  
C-1525  
333 S. White Street  
Post Office Box 1253  
Wake Forest, N.C. 27588  
(919) 555-7148

**NOTES:**  
-THIS PLAN DOES NOT REFLECT AN ACTUAL SURVEY. IT IS A PRELIMINARY PLAN AND SHOULD BE USED FOR ITS INTENDED PURPOSE ONLY.  
-NOT FOR RECORDATION, CONVEYANCES, OR SALES.

Handwritten mark resembling a large 'X' or 'IV'.