

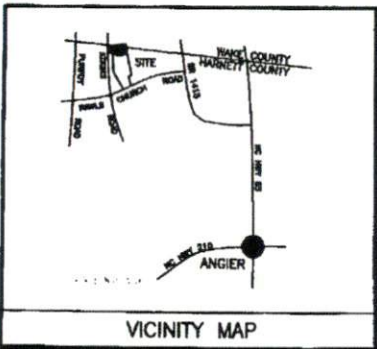
**SOIL/SITE EVALUATION
 for ON-SITE WASTEWATER SYSTEM**

Owner: Applicant:
 Address: Date Evaluated:
 Proposed Facility: *SFD* Design Flow (.1949): *300* Property Size:
 Location of Site: Property Recorded:
 Water Supply: Public Individual Well Spring Other
 Evaluation Method: Auger Boring Pit Cut
 Type of Wastewater: Sewage Industrial Process Mixed

P R O F I L E #	.1940 Landscape Position/ Slope %	Horizon Depth (In.)	SOIL MORPHOLOGY .1941		OTHER PROFILE FACTORS				Profile Class & LTAR
			.1941 Structure/ Texture	.1941 Consistence Mineralogy	.1942 Soil Wetness/ Color	.1943 Soil Depth (IN.)	.1956 Sapro Class	.1944 Restr Horiz	
1	<i>L45 1/2</i>	<i>0-15 SL</i>	<i>fm GR NSWP</i>						
		<i>15-40 SL-Cim</i>	<i>fm 1 3/4 S.P.</i>		<i>34</i>	<i>2.5 in</i> <i>3.1</i>			<i>.35</i>
2	<i>L45 1/2</i>	<i>0-16 SL</i>	<i>fm GR NSWP</i>						
		<i>16-40 SL-Cim</i>	<i>fm 1 3/4 S.P.</i>		<i>32</i>	<i>2.5 in</i> <i>3.1</i>			<i>.35</i>
3	<i>L45 1/2</i>	<i>0-14 SL</i>	<i>fm GR NSWP</i>						
		<i>14-40 SL-Cim</i>	<i>fm 1 3/4 S.P.</i>		<i>39</i>	<i>2.5 in</i> <i>3.1</i>			<i>.35</i>
4	<i>L45 1/2</i>	<i>0-8 SL</i>	<i>fm GR NSWP</i>						
		<i>8-26 Cim</i>	<i>fm 1 3/4 S.P.</i>		<i>24</i>	<i>2.5 in</i> <i>3.1</i>			<i>.2-7.2</i>
5	<i>L45 1/2</i>	<i>0-12 SL</i>	<i>fm GR NSWP</i>						
		<i>12-36 SL-Cim</i>	<i>fm 1 3/4 S.P.</i>		<i>34"</i>	<i>2.5 in</i> <i>3.1</i>			<i>.35</i>

Description	Initial System	Repair System	Other Factors (.1946): Site Classification (.1948): Evaluated By: <i>[Signature]</i> Others Present:
Available Space (.1945)			
System Type(s)	<i>2500</i>	<i>2500</i>	
Site LTAR	<i>3</i>	<i>3</i>	

2x80
250' R/W
81' 0" PL
81'-02" PL
91'-22" PL



PLOT PLAN FOR
COMFORT HOMES
BLACK RIVER TOWNSHIP
HARNETT COUNTY
NORTH CAROLINA

N 33°25'26" W 543.79'
TO C/L INTERSECTION OF
MOONLIGHT DRIVE &
SADDLEBROOK DRIVE



NOTE: BEING LOT 34 OF STETSON SUBDIVISION,
RECORDED IN MAP NUMBER 2008 PGS. 193-196 AND
RE-RECORDED IN MAP NUMBER 2008 PGS. 199-200.

NOTE: AREA COMPUTED BY COORDINATE METHOD.

NOTE: NO NCGS CONTROL MONUMENT WITHIN 2000'.

NOTE: LOTS TO BE SERVED BY HARNETT COUNTY
WATER AND INDIVIDUAL SEPTIC SYSTEMS.

NOTE: THIS PROPERTY IS SUBJECT TO
EASEMENTS AND RESTRICTIONS OF RECORD.

PRELIMINARY PLAT- NOT FOR RECORDATION,
CONVEYANCES, OR SALES.

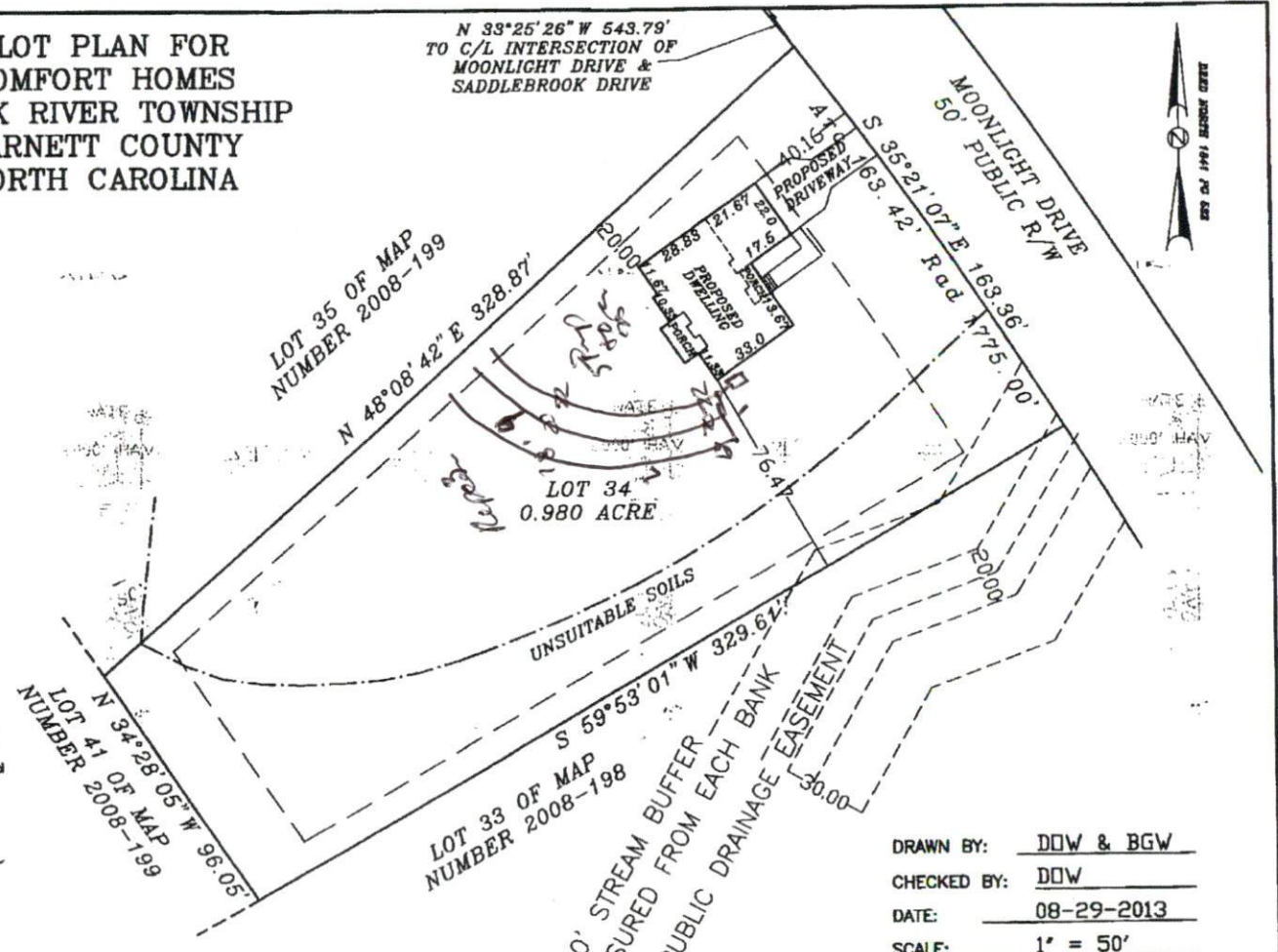
"I, Danny O. Williams, certify that this map was drawn under my
supervision that the boundaries not surveyed are indicated as
drawn from information in Map Number 2008 PGS. 193-196 and that the
ratio of precision or positional accuracy is 1:10,000 and that this
map meets the requirements of the Standards of Practice for Land
Surveying in North Carolina (21 NCAC 10.0100).

This 29TH day of AUGUST, 2013.

Seal

 NOTE: NOT AN ACTUAL FIELD SURVEY. THIS MAP IS A PRELIMINARY PLAT FOR MAP
NUMBER 2008 PGS 193-196.

**WILLIAMS - PEARCE and ASSOC.,
PROFESSIONAL LAND SURVEYORS, P.A.**
1000 N. ARENDELL AVE.
P.O. BOX 892, ZEBULON, N.C. 27597
PHONE: 919-269-9605 LIC. # C-0243



DRAWN BY: DDW & BGW

CHECKED BY: DDW

DATE: 08-29-2013

SCALE: 1" = 50'

JOB: STETSON CF

IMPERVIOUS SURFACE COVERAGE
2078 SQ.FT. - HOUSE & GARAGE
160 SQ.FT. - STEPS
659 SQ.FT. - DRIVEWAY
2897 TOTAL SQ.FT. - PROPOSED COVERAGE
9675 SQ.FT. - ALLOWABLE COVERAGE
6778 SQ.FT. - AVAILABLE COVERAGE

