

NOTE: THIS PROPERTY IS SUBJECT TO EASEMENTS AND RESTRICTIONS OF RECORD. PRELIMINARY PLAT- NOT FOR RECORDATION, CONVEYANCES, OR SALES.

IMPERVIOUS SURFACE COVERAGE
 1828 SQ.FT. - HOUSE, PORCH, GARAGE
 787 SQ.FT. - WALK & DRIVEWAY
 2615 TOTAL SQ.FT. - PROPOSED COVERAGE
 PERCENTAGE OF LOT COVERED -10.2 %

NOTE: BEING LOT 4 OF MEREDITH'S STATION, RECORDED IN MAP BOOK 2012, PAGES 297-299.

NOTE: AREA COMPUTED BY COORDINATE METHOD.

NOTE: NCGS MONUMENT WITHIN 2000' HAVE BEEN DESTROYED.

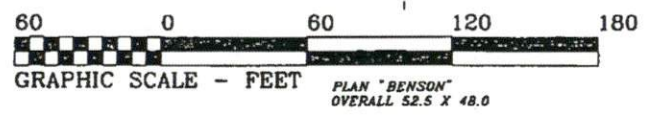
"I, Danny B. Williams, certify that this map was drawn under my supervision that the boundaries not surveyed are indicated as drawn from information in Map Number 2012 Pages 297-299. The ratio of precision or positional accuracy is 1:10,000; and that this map meets the requirements of The Standards of Practice for Land Surveying in North Carolina (21 NCAC 56.1600)."

This 29TH day of AUGUST, 2013

Seal
 DANNY O. WILLIAMS
 PROFESSIONAL LAND SURVEYOR
 NO. 2647

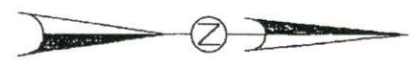
NOTE: NOT AN ACTUAL FIELD SKETCH. SEE RECORD MAP NUMBER 2012 PAGES 297-298.

WILLIAMS - PEARCE and ASSOC.,
PROFESSIONAL LAND SURVEYORS, P.A.
 1000 N. ARENDELL AVE.
 P.O. BOX 892, ZEBULON, N.C. 27597
 PHONE: 919-269-9605 LIC. # C-0243



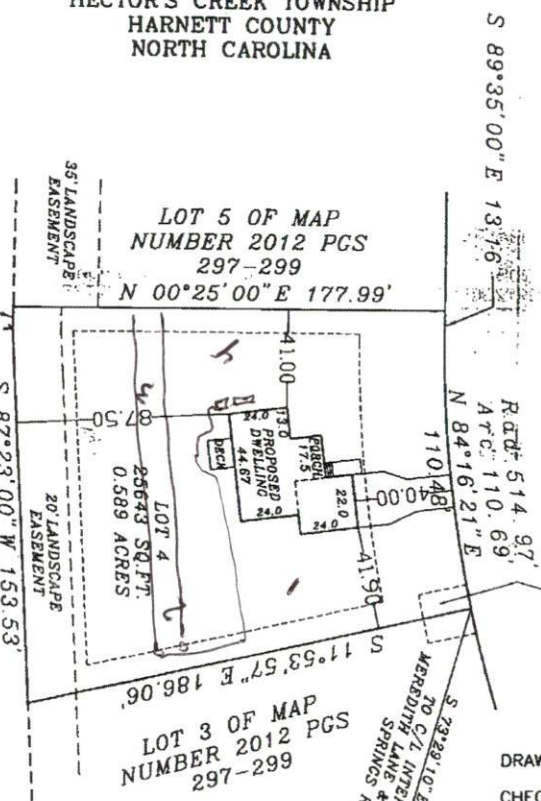
PLAT PLAN FOR
 COMFORT HOMES
 HECTOR'S CREEK TOWNSHIP
 HARNETT COUNTY
 NORTH CAROLINA

PLAT NORTH
 PLAT CAB. F SLIDE 170-B



NOW OR FORMERLY NONA J. CAVINESS PROPERTY
 DB 2201 PG 39

NOW OR FORMERLY LEVI B. MATTHEWS HEIRS PROPERTY
 DB 229 PG 384



MEREDITH LANE
 50' PUBLIC R/W

20' PRIVATE DRAINAGE EASEMENT

DRAWN BY: DOW & BGW
 CHECKED BY: DOW
 DATE: 08-29-13
 SCALE: 1" = 60'
 JOB: MERED CF
 FB:

Handwritten notes:
 2x100'
 26'-28"
 Top to