



COMMENTS: \_\_\_\_\_

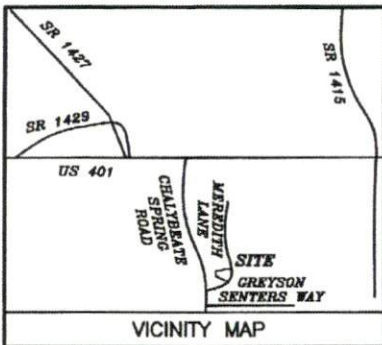
<u>LANDSCAPE POSITIONS</u>	<u>GROUP</u>	<u>TEXTURES</u>	<u>.1955 LTAR</u>	<u>CONSISTENCE MOIST</u>	<u>WET</u>
R-RIDGE	I	S-SAND	1.2 - 0.8	VFR-VERY FRIABLE FR-FRIABLE	NS-NON-STICKY SS-SLIGHTLY STICKY
S-SHOULDER SLOPE		LS-LOAMY SAND			
L-LINEAR SLOPE	II	SL-SANDY LOAM	0.8 - 0.6	FI-FIRM VFI-VERY FIRM	S-STICKY VS-VERY STICKY
FS-FOOT SLOPE		L-LOAM			
N-NOSE SLOPE	III	SI-SILT	0.6 - 0.3	EFI-EXTREMELY FIRM	NP-NON-PLASTIC SP-SLIGHTLY STICKY P-PLASTIC VP-VERY PLASTIC
H-HEAD SLOPE		SIL-SILT LOAM			
CC-CONCLAVE SLOPE		CL-CLAY LOAM			
CV-CONVEX SLOPE		SCL-SANDY CLAY LOAM			
T-TERRACE	IV	SIC-SILTY CLAY	0.4 - 0.1		
FP-FLOOD PLAN		C-CLAY SC-SANDY CLAY			

STRUCTURE  
 SG-SINGLE GRAIN  
 M- MASSIVE  
 CR-CRUMB  
 GR-GRANULAR  
 SBK-SUBANGULAR BLOCKY  
 ABK-ANGULAR BLOCKY  
 PL-PLATY  
 PR-PRISMATIC

MINERALOGY  
 SLIGHTLY EXPANSIVE  
 EXPANSIVE

Show profile locations and other site features (dimensions, references or benchmark, and North)

A large grid for site mapping and profile locations. The grid consists of 20 columns and 20 rows of squares. It is intended for drawing profile locations and other site features, including dimensions, references, benchmarks, and North indicators.



NOTE: THIS PROPERTY IS SUBJECT TO EASEMENTS AND RESTRICTIONS OF RECORD. PRELIMINARY PLAT- NOT FOR RECORDATION, CONVEYANCES, OR SALES.

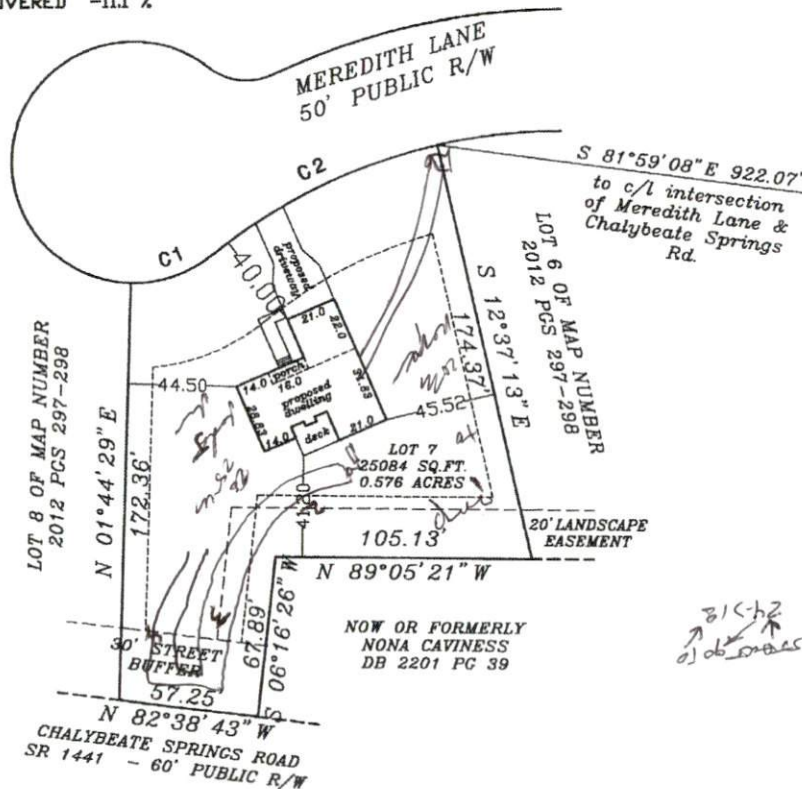
IMPERVIOUS SURFACE COVERAGE  
 1929 SQ.FT. - HOUSE, PORCH, GARAGE & PATIO  
 863 SQ.FT. - WALK & DRIVEWAY  
 2792 TOTAL SQ.FT. - PROPOSED COVERAGE  
 PERCENTAGE OF LOT COVERED -11.1 %

Curve	Radius	Length	Chord	Chord Bear.
C1	50.01'	35.70'	34.95'	N 71°17'02" E
C2	225.00'	104.19'	103.27'	N 64°04'27" E

NOTE: BEING LOT 7 OF MEREDITH'S STATION, RECORDED IN MAP BOOK 2012, PAGES 297-298.

NOTE: AREA COMPUTED BY COORDINATE METHOD.

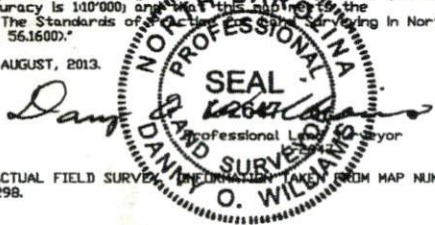
NOTE: NCGS MONUMENT WITHIN 2000' HAVE BEEN DESTROYED.



"I, Danny D. Williams, certify that this map was drawn under my supervision that the boundaries not surveyed are indicated by dashed lines drawn from information in Map Number 2012 Pages 297-298. The ratio of precision or positional accuracy is 1:100,000 and this map meets the requirements of The Standards of Professional Practice for Land Surveying in North Carolina (21 NCAC 56.1600)."

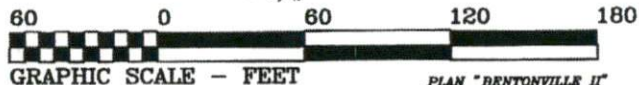
This 8TH day of AUGUST, 2013.

Seal



NOTE: NOT AN ACTUAL FIELD SURVEY. INFORMATION TAKEN FROM MAP NUMBER 2012 PAGES 297-298.

**WILLIAMS - PEARCE and ASSOC.,**  
**PROFESSIONAL LAND SURVEYORS, P.A.**  
 1000 N. ARENDELL AVE.  
 P.O. BOX 892, ZEBULON, N.C. 27597  
 PHONE: 919-269-9605 LIC. # C-0243



PLAN "BENTONVILLE II"  
 OVERALL 51.0 X 53.83

**PLOT PLAN FOR COMFORT HOMES**  
**HECTOR'S CREEK TOWNSHIP**  
**HARNETT COUNTY**  
**NORTH CAROLINA**

DRAWN BY: DDW & BGW

CHECKED BY: DDW

DATE: 08-08-13

SCALE: 1" = 60'

JOB: MERED CF  
 FB: