

COMMENTS: _____

<u>LANDSCAPE POSITIONS</u>	<u>GROUP</u>	<u>TEXTURES</u>	<u>.1955 LTAR</u>	<u>CONSISTENCE MOIST</u>	<u>WET</u>
R-RIDGE	I	S-SAND	1.2 - 0.8	VFR-VERY FRIABLE FR-FRIABLE FI-FIRM VFI-VERY FIRM EFI-EXTREMELY FIRM	NS-NON-STICKY SS-SLIGHTLY STICKY S-STICKY VS-VERY STICKY NP-NON-PLASTIC SP-SLIGHTLY STICKY P-PLASTIC VP-VERY PLASTIC
S-SHOULDER SLOPE		LS-LOAMY SAND			
L-LINEAR SLOPE	II	SL-SANDY LOAM	0.8 - 0.6		
FS-FOOT SLOPE		L-LOAM			
N-NOSE SLOPE	III	SI-SILT	0.6 - 0.3		
H-HEAD SLOPE		SIL-SILT LOAM			
CC-CONCLAVE SLOPE		CL-CLAY LOAM			
CV-CONVEX SLOPE		SCL-SANDY CLAY LOAM			
T-TERRACE	IV	SIC-SILTY CLAY	0.4 - 0.1		
FP-FLOOD PLAN		C-CLAY SC-SANDY CLAY			

STRUCTURE

- SG-SINGLE GRAIN
- M- MASSIVE
- CR-CRUMB
- GR-GRANULAR
- SBK-SUBANGULAR BLOCKY
- ABK-ANGULAR BLOCKY
- PL-PLATY
- PR-PRISMATIC

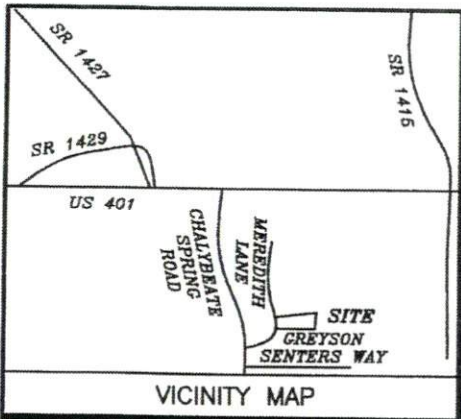
MINERALOGY

- SLIGHTLY EXPANSIVE
- EXPANSIVE

Show profile locations and other site features (dimensions, references or benchmark, and North)

A large grid for drawing site profiles and features. The grid is approximately 20 units wide and 25 units high, providing a space for detailed site mapping and profile drawings.

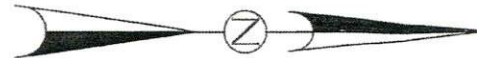
Curve	Radius	Length	Chord
C1	335.00'	106.40'	105.95'



NOTE: THIS PROPERTY IS SUBJECT TO EASEMENTS AND RESTRICTIONS OF RECORD.
PRELIMINARY PLAT- NOT FOR RECORDATION, CONVEYANCES, OR SALES.

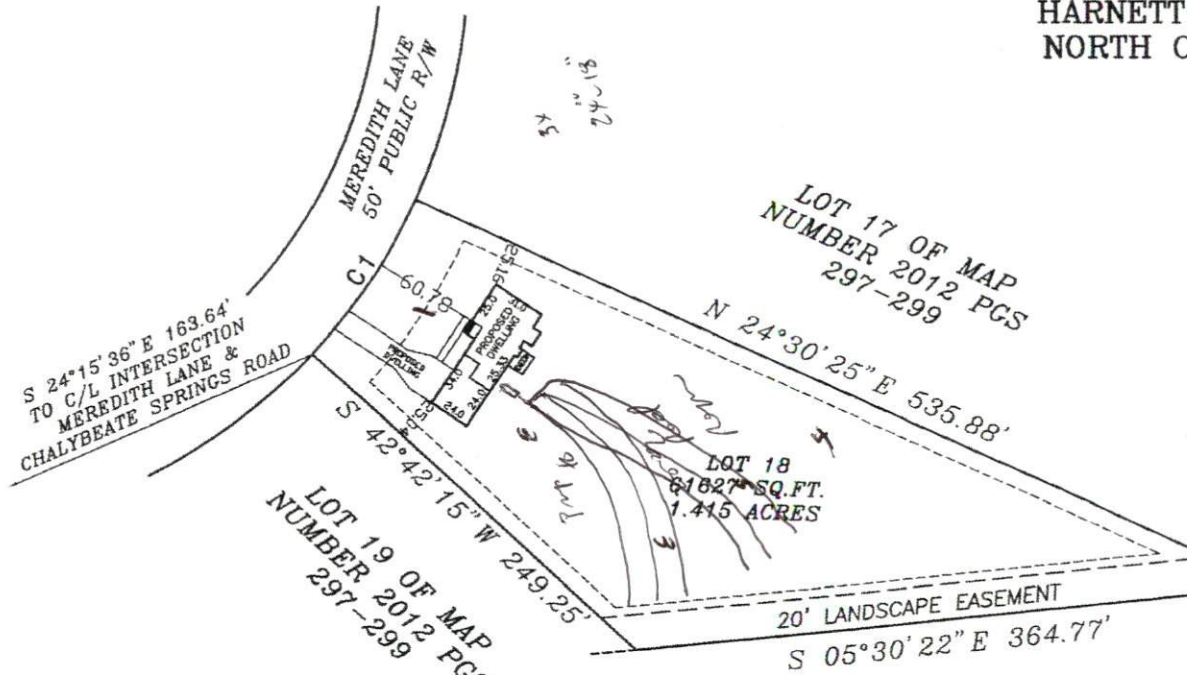
IMPERVIOUS SURFACE COVERAGE
2121 SQ.FT. - HOUSE, PORCH & GARAGE
1258 SQ.FT. - WALK & DRIVEWAY
3379 TOTAL SQ.FT. - PROPOSED COVERAGE
PERCENTAGE OF LOT COVERED - 5.5%

PLAT NORTH
PLAT CAB. F SLIDE 170-B



PLOT PL
COMFORT
HECTOR'S CRE
HARNETT
NORTH C

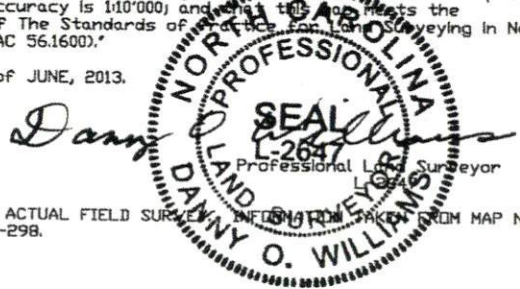
NOTE: BEING LOT 18 OF MEREDITH'S STATION, RECORDED IN MAP BOOK 2012, PAGES 297-299.
NOTE: AREA COMPUTED BY COORDINATE METHOD.
NOTE: NCGS MONUMENT WITHIN 2000' HAVE BEEN DESTROYED.



"I Danny O. Williams, certify that this map was drawn under my supervision; that the boundaries not surveyed are indicated as drawn from information in Map Number 2012 Pages 297-299, and that the ratio of precision or positional accuracy is 1:10'000, and that this map meets the requirements of The Standards of Practice for Land Surveying in North Carolina (21 NCAC 56.1600)."

This 20th day of JUNE, 2013.

Seal



NOTE: NOT AN ACTUAL FIELD SURVEY. INFORMATION TAKEN FROM MAP NUMBER 2012 PAGES 297-299.

WILLIAMS - PEARCE & ASSOC., P.A.
P. O. BOX 892
ZEBULON, N. C.
PHONE: 269-9605



GRAPHIC SCALE - FEET
DON
77.0 X 36.33

DRAWN BY:
CHECKED BY:
DATE: ___
SCALE: ___
JOB: MERE
FB:

NOW OR
FORMERLY WILLIAM
A. ALLEN ET IS
DB 1357 PG 694