

COMMENTS: _____

<u>LANDSCAPE POSITIONS</u>	<u>GROUP</u>	<u>TEXTURES</u>	<u>.1955 LTAR</u>	<u>CONSISTENCE MOIST</u>	<u>WET</u>
R-RIDGE	I	S-SAND	1.2 - 0.8	VFR-VERY FRIABLE FR-FRIABLE FI-FIRM VFI-VERY FIRM EFI-EXTREMELY FIRM	NS-NON-STICKY SS-SLIGHTY STICKY S-STICKY VS-VERY STICKY NP-NON-PLASTIC SP-SLIGHTLY STICKY P-PLASTIC VP-VERY PLASTIC
S-SHOULDER SLOPE		LS-LOAMY SAND			
L-LINEAR SLOPE					
FS-FOOT SLOPE	II	SL-SANDY LOAM	0.8 - 0.6		
N-NOSE SLOPE		L-LOAM			
H-HEAD SLOPE	III	SI-SILT	0.6 - 0.3		
CC-CONCLAVE SLOPE		SIL-SILT LOAM			
CV-CONVEX SLOPE		CL-CLAY LOAM			
T-TERRACE					
FP-FLOOD PLAN		SCL-SANDY CLAY LOAM			
	IV	SIC-SILTY CLAY	0.4 - 0.1		
		C-CLAY			
		SC-SANDY CLAY			

STRUCTURE

- SG-SINGLE GRAIN
- M- MASSIVE
- CR-CRUMB
- GR-GRANULAR
- SBK-SUBANGULAR BLOCKY
- ABK-ANGULAR BLOCKY
- PL-PLATY
- PR-PRISMATIC

MINERALOGY

- SLIGHTLY EXPANSIVE
- EXPANSIVE

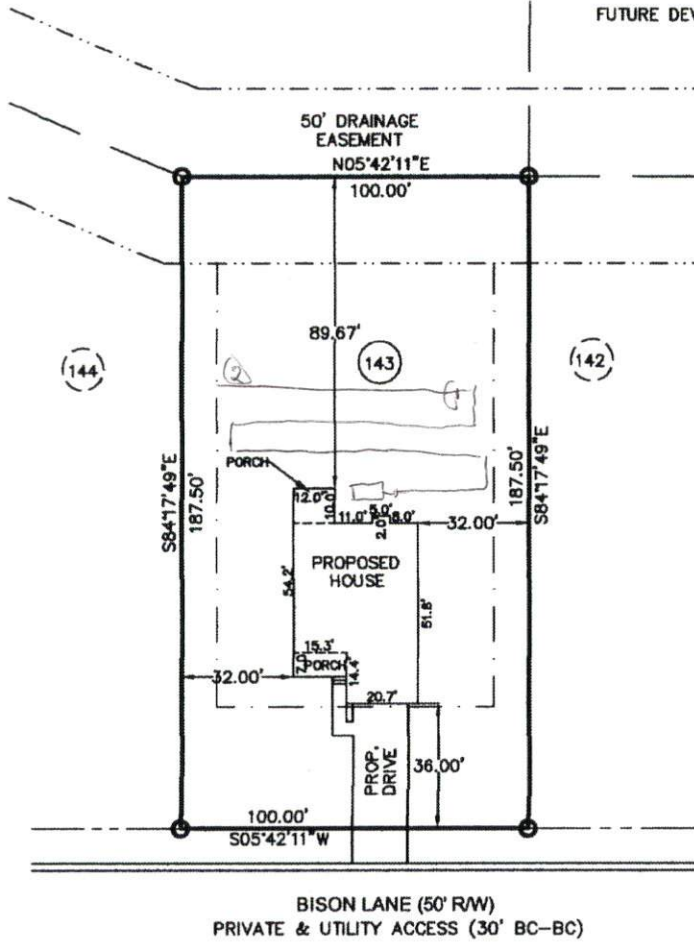
Show profile locations and other site features (dimensions, references or benchmark, and North)

A large grid for recording profile locations and site features. The grid consists of 20 columns and 20 rows of empty cells, intended for drawing or recording data.

HOUSE PLAN: CARTER - REVERSED

MAP BOOK 2012, PG 479

N/F
OAKMONT DEVELOPMENT
PARTNERS, LLC
DB 2881, PG 134
PB 2009, PG 312
FUTURE DEVELOPMENT



300 NEEDED

60'

7-20

560

NEED 40

1x300 @ 36-18'

NO STAIRS

= REPAIR?

PLOT PLAN

SUBDIVISION: OAKMONT SUBDIVISION
PHASE ONE
SECTION TWO
MAP BOOK 2012, PAGE 479

OWNER: MCKEE HOMES, LLC
SCALE: 1" = 50'



The design for the proposed sewage disposal system _____ approved.
Sanitarian Supervisor
Harnett County Health Dept.
Date _____

Averette Engineering Co., P.A.
Established 1970
CIVIL ENGINEERING
LAND SURVEYING
PLANNING
Address: 712 E. Lake Ridge Road
Raeford, NC 28376
Phone: (910) 488-5656
Fax: (910) 488-0181
License: C-0146
Web: www.averette-eng.com

Michael D. Averette
Michael D. Averette PE-021411
Professional Engineer
FEBRUARY 4, 2013
Date _____

PPLAN124/D