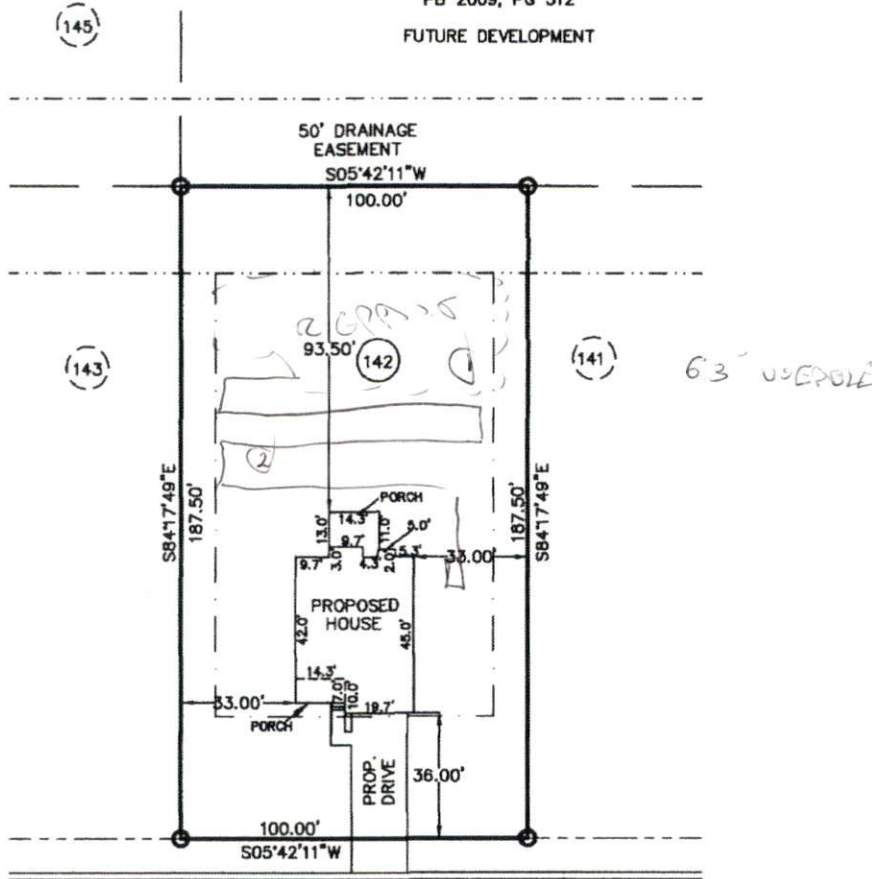


HOUSE PLAN: FINLEY

N/F
OAKMONT DEVELOPMENT
PARTNERS, LLC
DB 2881, PG 134
PB 2009, PG 312

FUTURE DEVELOPMENT



BISON LANE (50' RAW)
PRIVATE & UTILITY ACCESS (30' BC-BC)

BLAKELY COURT (50' RAW)
PRIVATE & UTILITY ACCESS (30' BC-BC)



1x300 @ 36-48"
NO STEPS
= REPAIR

PLOT PLAN

SUBDIVISION: OAKMONT SUBDIVISION
PHASE ONE
SECTION TWO
MAP BOOK 2012, PAGE 479

OWNER: MCKEE HOMES, LLC

SCALE: 1" = 50'



The design for the proposed
sewage disposal system
_____ approved.

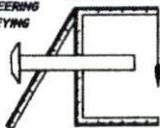
Sanitarian Supervisor
Hamett County Health Dept.

Date

Averette Engineering Co., P.A.

Established 1970

CIVIL ENGINEERING
LAND SURVEYING
PLANNING



Address:
712 E. Lake Ridge Road
Raeeford, NC 28376

Phone: (910) 488-5656
Fax: (910) 488-0181
License: C-0146

Web: www.averette-eng.com

Michael D. Averette

Michael D. Averette PE-021411
Professional Engineer

FEBRUARY 4, 2013

Date

PPLAN124 C