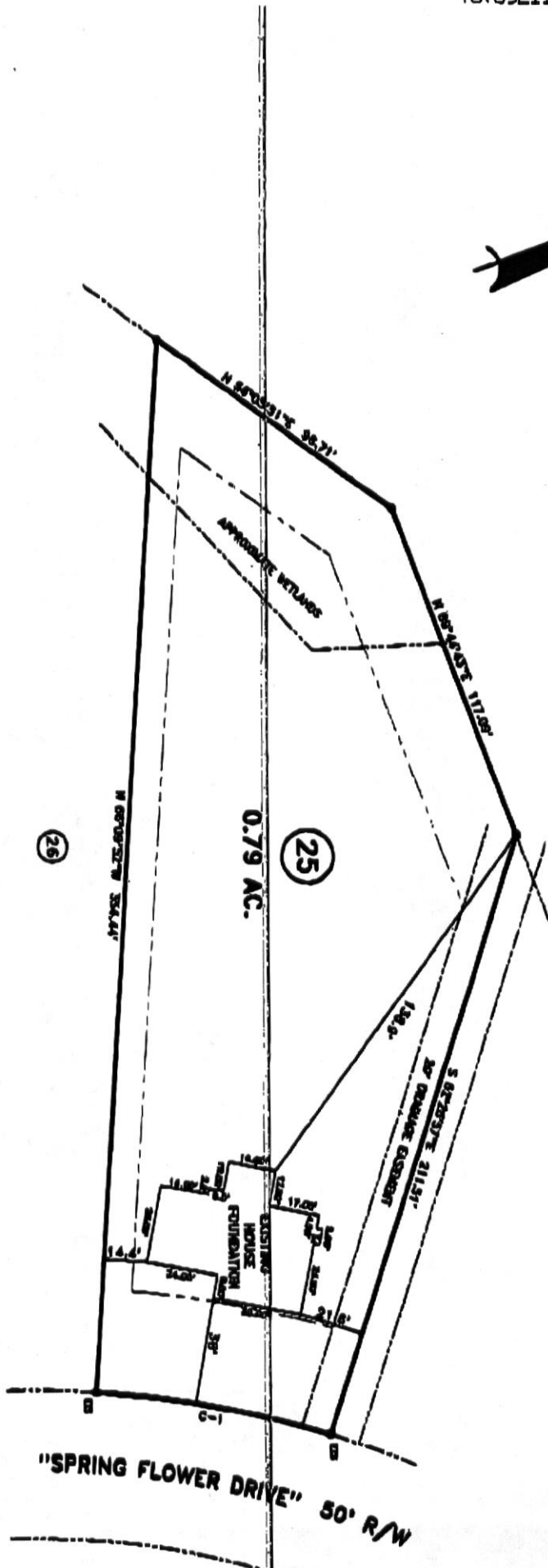


Please hold. Rough. No wrap. DJJ C. JOHNSON - 12-50030029

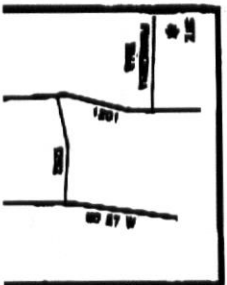
MAP NO. 2009-88-89



CORNER	BEARING	LENGTH	CHORD	CLEARANCE
C-1	S 85° 00'	101.10'	101.10'	5 30' 41" 40" W

- 1. ALL DISTANCES ARE IN FEET AND DECIMALS THEREOF.
- 2. ALL BEARINGS ARE TRUE BEARINGS.
- 3. ALL DISTANCES ARE MEASURED ALONG THE CENTER OF THE STRAIGHT LINES.
- 4. ALL DISTANCES ARE MEASURED ALONG THE CENTER OF THE CURVED LINES.
- 5. ALL DISTANCES ARE MEASURED ALONG THE CENTER OF THE SPIRAL LINES.
- 6. ALL DISTANCES ARE MEASURED ALONG THE CENTER OF THE PARABOLIC CURVES.
- 7. ALL DISTANCES ARE MEASURED ALONG THE CENTER OF THE HYPERBOLIC CURVES.
- 8. ALL DISTANCES ARE MEASURED ALONG THE CENTER OF THE ELLIPTIC CURVES.
- 9. ALL DISTANCES ARE MEASURED ALONG THE CENTER OF THE PARABOLIC CURVES.
- 10. ALL DISTANCES ARE MEASURED ALONG THE CENTER OF THE HYPERBOLIC CURVES.
- 11. ALL DISTANCES ARE MEASURED ALONG THE CENTER OF THE ELLIPTIC CURVES.
- 12. ALL DISTANCES ARE MEASURED ALONG THE CENTER OF THE PARABOLIC CURVES.
- 13. ALL DISTANCES ARE MEASURED ALONG THE CENTER OF THE HYPERBOLIC CURVES.
- 14. ALL DISTANCES ARE MEASURED ALONG THE CENTER OF THE ELLIPTIC CURVES.
- 15. ALL DISTANCES ARE MEASURED ALONG THE CENTER OF THE PARABOLIC CURVES.
- 16. ALL DISTANCES ARE MEASURED ALONG THE CENTER OF THE HYPERBOLIC CURVES.
- 17. ALL DISTANCES ARE MEASURED ALONG THE CENTER OF THE ELLIPTIC CURVES.
- 18. ALL DISTANCES ARE MEASURED ALONG THE CENTER OF THE PARABOLIC CURVES.
- 19. ALL DISTANCES ARE MEASURED ALONG THE CENTER OF THE HYPERBOLIC CURVES.
- 20. ALL DISTANCES ARE MEASURED ALONG THE CENTER OF THE ELLIPTIC CURVES.

- 1. ALL DISTANCES ARE IN FEET AND DECIMALS THEREOF.
- 2. ALL BEARINGS ARE TRUE BEARINGS.
- 3. ALL DISTANCES ARE MEASURED ALONG THE CENTER OF THE STRAIGHT LINES.
- 4. ALL DISTANCES ARE MEASURED ALONG THE CENTER OF THE CURVED LINES.
- 5. ALL DISTANCES ARE MEASURED ALONG THE CENTER OF THE SPIRAL LINES.
- 6. ALL DISTANCES ARE MEASURED ALONG THE CENTER OF THE PARABOLIC CURVES.
- 7. ALL DISTANCES ARE MEASURED ALONG THE CENTER OF THE HYPERBOLIC CURVES.
- 8. ALL DISTANCES ARE MEASURED ALONG THE CENTER OF THE ELLIPTIC CURVES.
- 9. ALL DISTANCES ARE MEASURED ALONG THE CENTER OF THE PARABOLIC CURVES.
- 10. ALL DISTANCES ARE MEASURED ALONG THE CENTER OF THE HYPERBOLIC CURVES.
- 11. ALL DISTANCES ARE MEASURED ALONG THE CENTER OF THE ELLIPTIC CURVES.
- 12. ALL DISTANCES ARE MEASURED ALONG THE CENTER OF THE PARABOLIC CURVES.
- 13. ALL DISTANCES ARE MEASURED ALONG THE CENTER OF THE HYPERBOLIC CURVES.
- 14. ALL DISTANCES ARE MEASURED ALONG THE CENTER OF THE ELLIPTIC CURVES.
- 15. ALL DISTANCES ARE MEASURED ALONG THE CENTER OF THE PARABOLIC CURVES.
- 16. ALL DISTANCES ARE MEASURED ALONG THE CENTER OF THE HYPERBOLIC CURVES.
- 17. ALL DISTANCES ARE MEASURED ALONG THE CENTER OF THE ELLIPTIC CURVES.
- 18. ALL DISTANCES ARE MEASURED ALONG THE CENTER OF THE PARABOLIC CURVES.
- 19. ALL DISTANCES ARE MEASURED ALONG THE CENTER OF THE HYPERBOLIC CURVES.
- 20. ALL DISTANCES ARE MEASURED ALONG THE CENTER OF THE ELLIPTIC CURVES.



PROPERTY:
FOUNDATION LOCATION SURVEY - LOT - 25
CAROLINA SEASONS S/D/P/PHASE - 2-SECTION - 1

OWNER:
 CAROLINA SEASONS S/D/P/PHASE - 2-SECTION - 1

DATE:
 01/09/2013

PROJECTED BY:
 DDB

FIELD BOOK:
 FILE

DEED REFERENCE: DEED BK 3063, PAGE 89
 MAP REFERENCE: MAP NO. 2009-88-89

Missy D. Bayard