

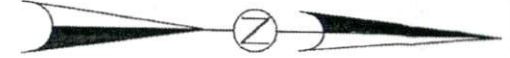
SR 1416

NOTE: THIS PROPERTY IS SUBJECT TO EASEMENTS AND RESTRICTIONS OF RECORD. PRELIMINARY PLAT- NOT FOR RECORDATION, CONVEYANCES, OR SALES.

IMPERVIOUS SURFACE COVERAGE
1825 SQ.FT. - HOUSE, PORCH & GARAGE
850 SQ.FT. - WALK & DRIVEWAY
2675 TOTAL SQ.FT. - PROPOSED COVERAGE
PERCENTAGE OF LOT COVERED -10.5 %

Curve	Radius	Length	Chord	Chord Bear.
C1	285.00'	189.13'	185.68'	S 86°00'15" E

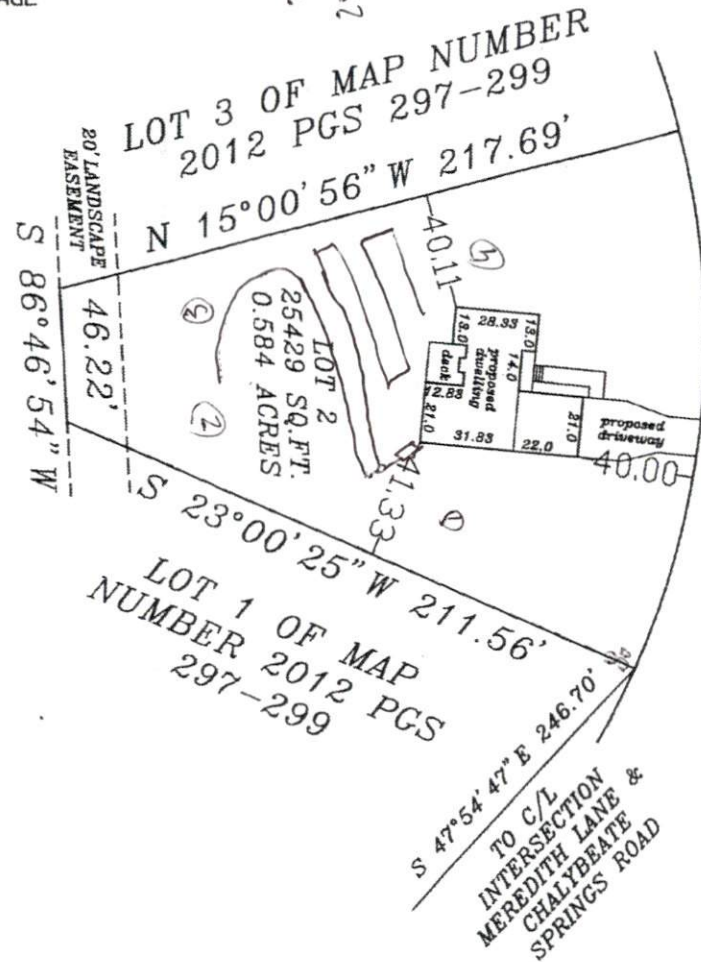
PLAT NORTH
PLAT CAB. F SLIDE 170-B



TE
REYSON
TERS WAY
P

IF MEREDITH'S STATION,
' 2012, PAGES 297-299.
D BY COORDINATE METHOD.
T WITHIN 2000' HAVE

NOW OR FORMERLY
LEVI B. MATTHEWS
HEIRS
DB 229 PG 384



MEREDITH LANE
50' PUBLIC R/W
C1

that this map was drawn under my supervision;
veyed are indicated as drawn from
12 Pages 297-299, that the ratio of precision
'000) and that this map meets the
ds of Practice for Land Surveying in North

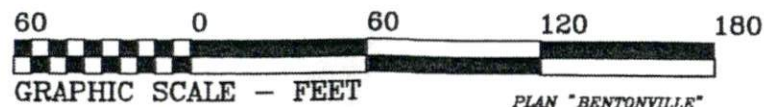


LOT 1 OF MAP
NUMBER 2012 PGS
297-299

PLOT PLAN FOR
COMFORT HOMES
HECTOR'S CREEK TOWNSHIP
HARNETT COUNTY
NORTH CAROLINA

DRAWN BY: DOW & BGW
CHECKED BY: DOW
DATE: 10-03-2012
SCALE: 1" = 60'
JOB: MERED CF
FB:

RCE & ASSOC., P.A.



PLAN "BENTONVILLE"
OVERALL 48.0 X 53.83

