

SOUTHEASTERN SOIL & ENVIRONMENTAL ASSOC., INC.

PROPOSED SUBSURFACE WASTE DISPOSAL SYSTEM DETAIL SHEET

SUBDIVISION	<u>Ashford</u>	LOT	<u>24</u>
INITIAL SYSTEM	<u>PUMP TO APPROVED 25% REDUCTION</u>	REPAIR	<u>PUMP TO APPROVED 25%</u>
DISTRIBUTION	<u>SERIAL</u>	DISTRIBUTION	<u>SERIAL</u>
BENCHMARK	<u>100.0</u>	LOCATION	<u>FRONT CORNER 24/25</u>
NO. BEDROOMS	<u>3</u>	PROPOSED LTAR	<u>0.5 GPD/FT<sup>2</sup> INITIAL 0.8 GPD/FT<sup>2</sup> REPAIR</u>

LINE	FLAG COLOR	ELEVATION	LENGTH (FT)
1	Y	102.00	30'
2	P	101.25	42'
3	Y	100.34	60'
4	P	100.25	60'
5A	Y	100.08	20'
			212' AVAILABLE
5B	Y	100.08	40'
6	P	99.25	45'
7	Y	99.00	35'
			120' AVAILABLE

Initial {

BY M EAVEN DATE 10/22/12

TYPICAL PROFILE (INITIAL)

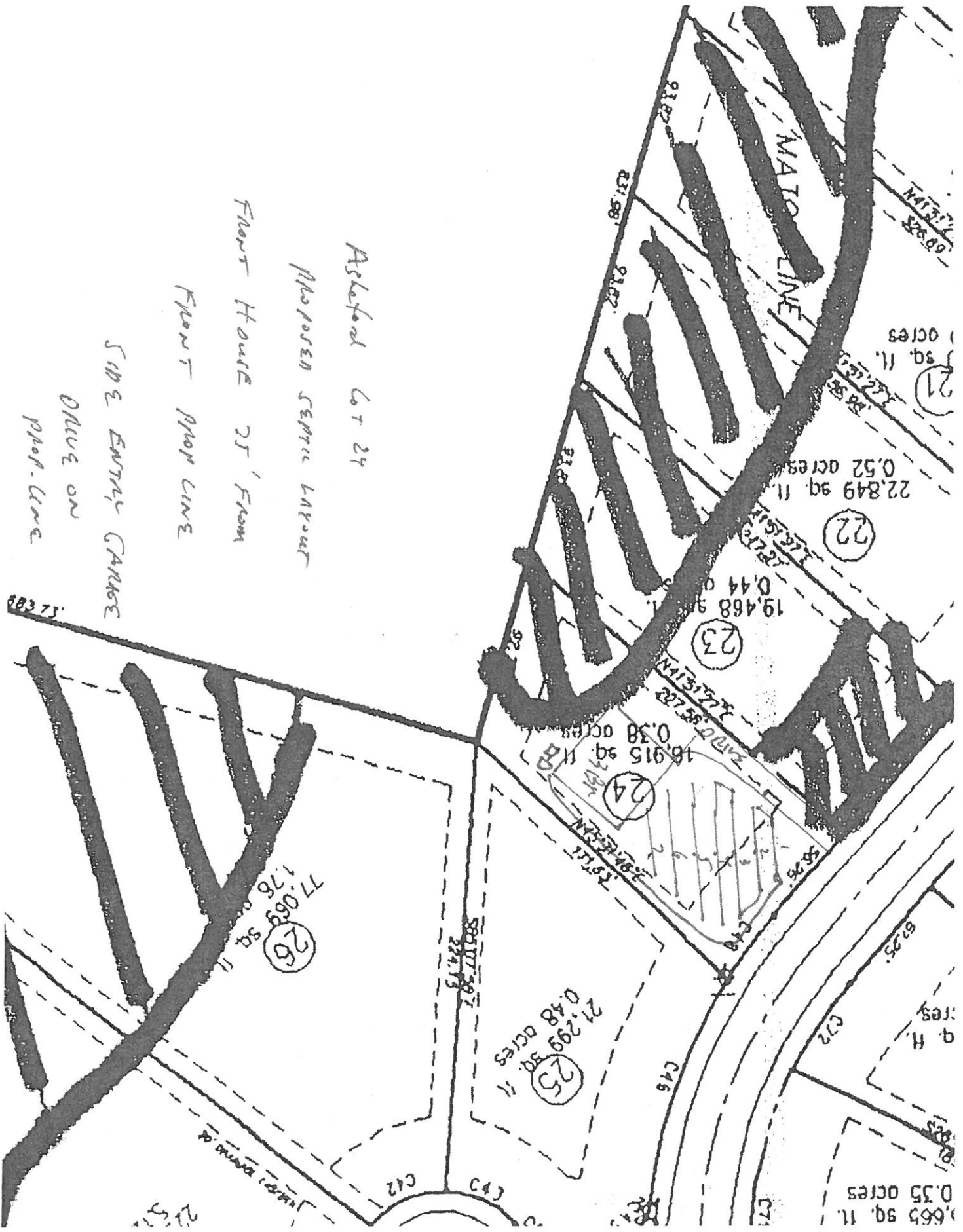
0-14 US/S (VF, wet)

14-48+ SCL (Fr, shkl)

Cr 2 > 46"

INSTAG 4T 18-20"

KSAT @ 46" IN AREA OF  
LINE 3/4 yielded 112 gpd/ft<sup>2</sup>  
Equates to 4.49 gpd/ft<sup>2</sup> @ 4%  
OF KSAT



Askeford Lot 24  
 Proposed Septic Layout  
 Front House 25' From  
 Front Prop Line  
 Side Entry Garage  
 Drive on  
 Prop. Line

0.665 sq. ft.  
 0.35 acres

0.52 acres  
 22,849 sq. ft.  
 (21)

(22)

(23)

(24)

(25)

(25)