

COMMENTS: _____

<u>LANDSCAPE POSITIONS</u>	<u>GROUP</u>	<u>TEXTURES</u>	<u>.1955 LTAR</u>	<u>CONSISTENCE MOIST</u>	<u>WET</u>
R-RIDGE	I	S-SAND	1.2 - 0.8	VFR-VERY FRIABLE	NS-NON-STICKY
S-SHOULDER SLOPE		LS-LOAMY SAND			
L-LINEAR SLOPE	II	SL-SANDY LOAM	0.8 - 0.6	FR-FRIABLE	SS-SLIGHTLY STICKY
FS-FOOT SLOPE		L-LOAM		FI-FIRM	S-STICKY
N-NOSE SLOPE	III	SI-SILT	0.6 - 0.3	VFI-VERY FIRM	VS-VERY STICKY
H-HEAD SLOPE				EFI-EXTREMELY FIRM	NP-NON-PLASTIC
CC-CONCLAVE SLOPE					SP-SLIGHTLY STICKY
CV-CONVEX SLOPE					P-PLASTIC
T-TERRACE	IV	SIC-SILTY CLAY	0.4 - 0.1		VP-VERY PLASTIC
FP-FLOOD PLAN		C-CLAY			
		SC-SANDY CLAY			

STRUCTURE

- SG-SINGLE GRAIN
- M- MASSIVE
- CR-CRUMB
- GR-GRANULAR
- SBK-SUBANGULAR BLOCKY
- ABK-ANGULAR BLOCKY
- PL-PLATY
- PR-PRISMATIC

MINERALOGY

- SLIGHTLY EXPANSIVE
- EXPANSIVE

Show profile locations and other site features (dimensions, references or benchmark, and North)

A large grid for recording profile locations and site features. The grid consists of 20 columns and 20 rows of empty cells, intended for drawing or recording data.



VICINITY MAP

**PLOT PLAN FOR
COMFORT HOMES
BLACK RIVER TOWNSHIP
HARNETT COUNTY
NORTH CAROLINA**

Curve	Radius	Length	Chord	Chord Bear.
C1	1825.00'	132.66'	132.63'	N 16°21'38" W
Course	Bearing	Distance		
L1	S 34°17'08" E	11.38'		

NOTE: BEING LOT 23 OF STETSON SUBDIVISION, RECORDED IN MAP NUMBER 2008 PGS. 193-200.

NOTE: AREA COMPUTED BY COORDINATE METHOD.

NOTE: NO NCGS CONTROL MONUMENT WITHIN 2000'.

NOTE: LOTS TO BE SERVED BY HARNETT COUNTY WATER AND INDIVIDUAL SEPTIC SYSTEMS.

IMPERVIOUS SURFACE COVERAGE
2160 SQ.FT. - HOUSE & GARAGE
24 SQ.FT. - STEPS
1188 SQ.FT. - DRIVEWAY
3372 TOTAL SQ.FT. - PROPOSED COVERAGE
9033 SQ.FT. - ALLOWABLE COVERAGE
5661 SQ.FT. - AVAILABLE COVERAGE

"I, Danny D. Williams, certify that this map was drawn under my supervision; that the boundaries not surveyed are indicated as drawn from information in Map Number 2008, Pages 193-200; that the ratio of precision or positional accuracy is 1:100,000; and that this map meets the requirements of the Standards of Practice for Land Surveying in North Carolina (21 N.E.A.C. 55-1600).

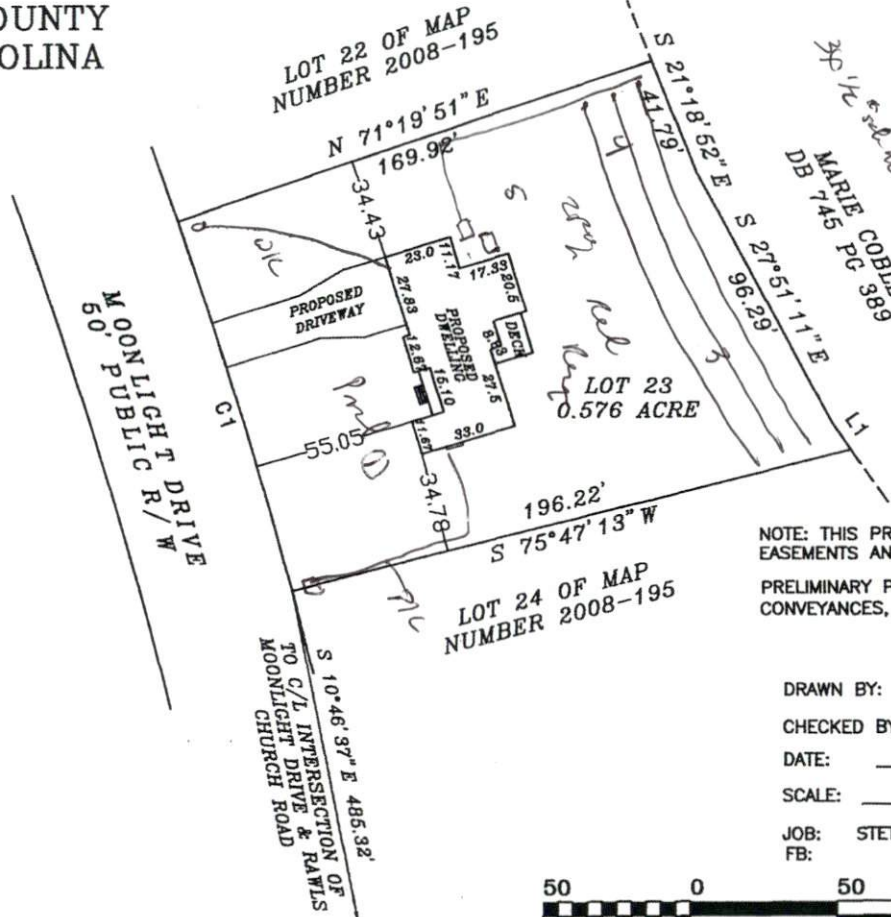
This 22nd day of MAY, 2012.

Seal



NOTE: NOT AN ACTUAL FIELD SURVEY. INFORMATION TAKEN FROM MAP NUMBER 2008 PGS 193-200.

WILLIAMS - PEARCE & ASSOC., P.A.
P. O. BOX 892
ZEBULON, N. C.
PHONE: 269-9605



NOTE: THIS PROPERTY IS SUBJECT TO EASEMENTS AND RESTRICTIONS OF RECORD.
PRELIMINARY PLAT- NOT FOR RECORDATION, CONVEYANCES, OR SALES.

DRAWN BY: DOW & BGW
CHECKED BY: DOW
DATE: 05-22-2012
SCALE: 1" = 50'
JOB: STETSON CF
FB:

