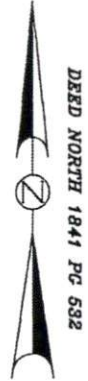








VICINITY MAP



PLOT PLAN FOR  
COMFORT HOMES  
BLACK RIVER TOWNSHIP  
HARNETT COUNTY  
NORTH CAROLINA

Course	Bearing	Distance
L1	S 41°40'34" E	17.92'

NOTE: BEING LOT 12 OF STETSON SUBDIVISION, RECORDED IN MAP NUMBER 2008 PGS. 193-196 AND RE-RECORDED IN MAP NUMBER 2008 PGS. 199-200.

NOTE: AREA COMPUTED BY COORDINATE METHOD.

NOTE: NO NCGS CONTROL MONUMENT WITHIN 2000'.

NOTE: LOTS TO BE SERVED BY HARNETT COUNTY WATER AND INDIVIDUAL SEPTIC SYSTEMS.

NOTE: THIS PROPERTY IS SUBJECT TO EASEMENTS AND RESTRICTIONS OF RECORD.

PRELIMINARY PLAT- NOT FOR RECORDATION, CONVEYANCES, OR SALES.

"I, Darryl D. Williams, certify that this map was drawn under my supervision that the boundaries not surveyed are indicated as drawn from information in Map Number 2008, Pages 193-196 that the ratio of precision or positional accuracy is 1/10,000, and that this map meets the requirements of The Standards of Practice for Land Surveying in North Carolina (21 NCAC 56.1600)."

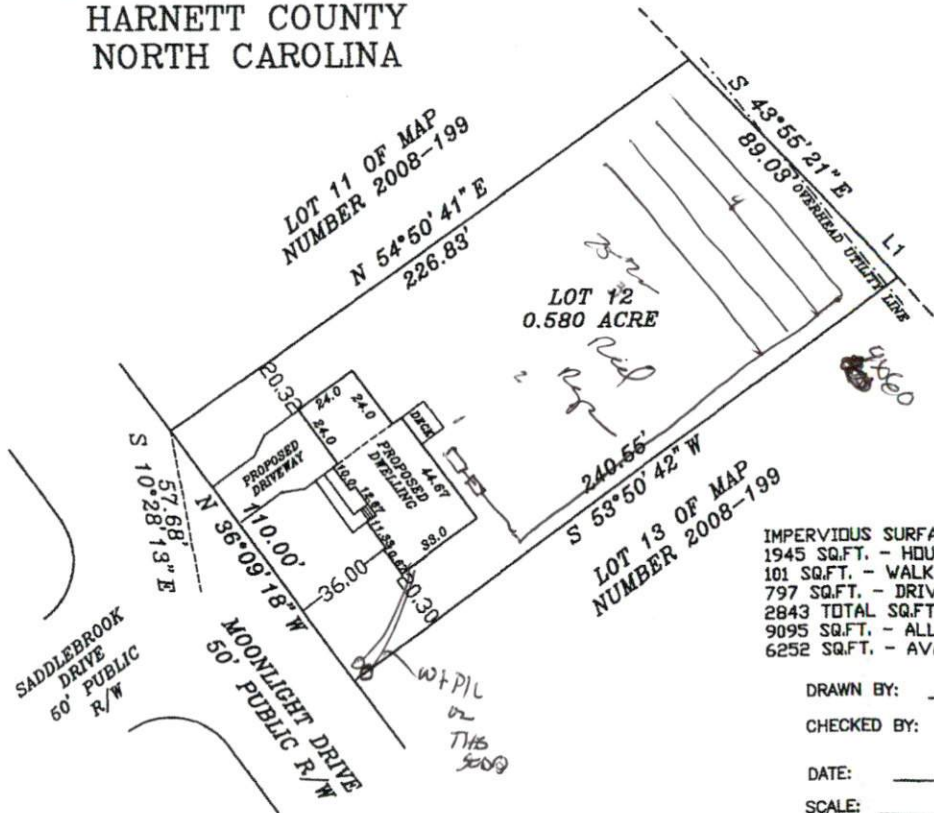
This 23rd day of MAY, 2012.

Seal

*Darryl D. Williams*  
Professional Land Surveyor  
L-26472

NOTE: NOT AN ACTUAL FIELD SURVEY. INFORMATION TAKEN FROM MAP NUMBER 2008 PGS 193-196.

WILLIAMS - PEARCE & ASSOC., P.A.  
P. O. BOX 892  
ZEBULON, N. C.  
PHONE: 269-9605



IMPERVIOUS SURFACE COVERAGE  
1945 SQ.FT. - HOUSE & GARAGE  
101 SQ.FT. - WALK & STEPS  
797 SQ.FT. - DRIVEWAY  
2843 TOTAL SQ.FT. - PROPOSED COVERAGE  
9095 SQ.FT. - ALLOWABLE COVERAGE  
6252 SQ.FT. - AVAILABLE COVERAGE

DRAWN BY: DDW & BGW

CHECKED BY: DDW  
(rev. 06-18-12)

DATE: 05-23-2012

SCALE: 1" = 50'

JOB: STETSON CF

