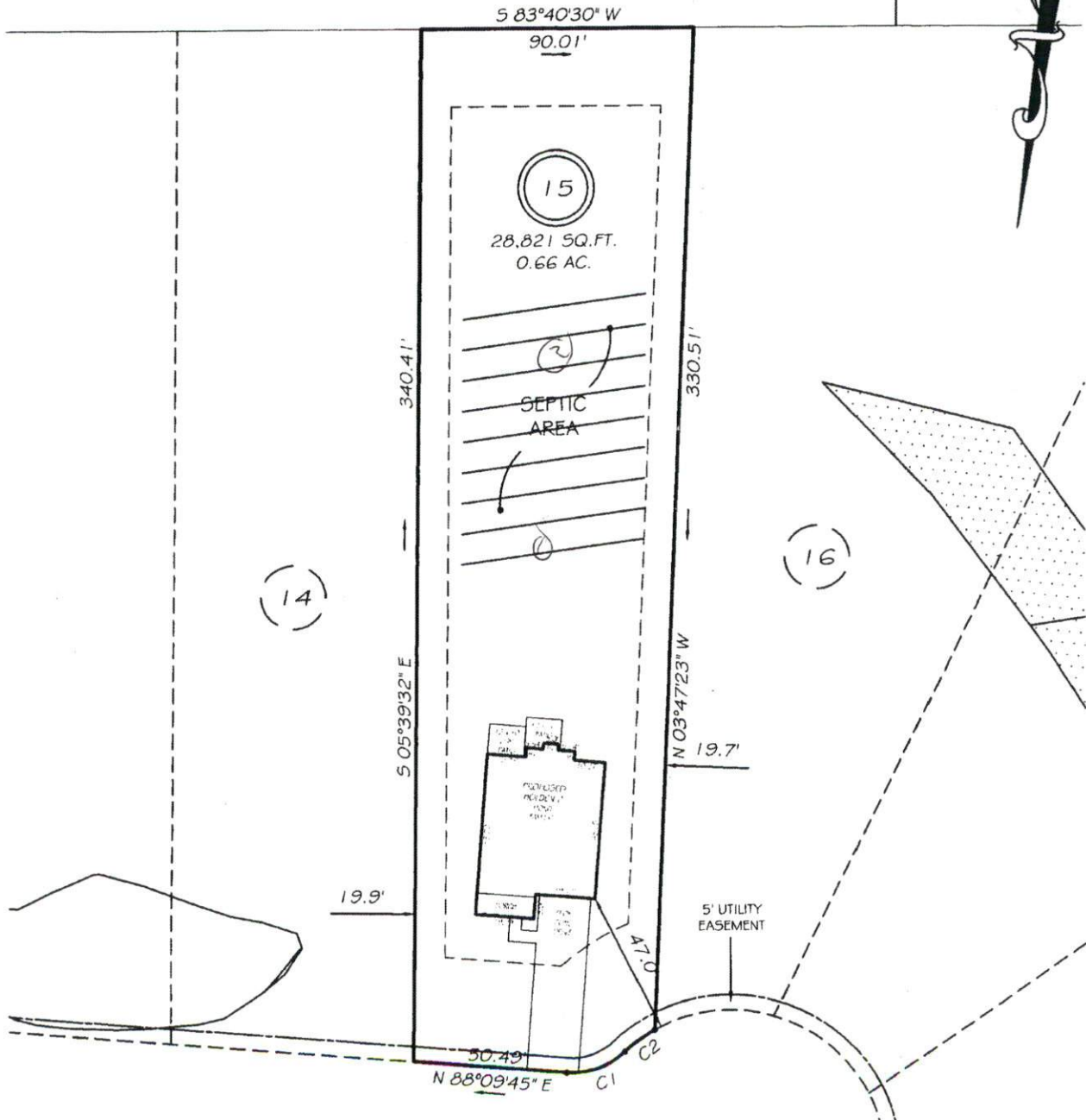


I, MICHAEL P. GRIFFIN, certify that under my direction and supervision this map was drawn from an actual field survey; that the error of closure of the survey as calculated by coordinates is 1: 10,000+; that the area shown hereon was calculated by coordinates.
 Witness my hand and seal this day of MONTH 2012.

BK 2011 Pg 575
 HARNETT CO. REGISTRY

N/F
 WILLIAM & HEWLEN BUCHANAN
 DB 1591 PAGE 800



OLDE CYPRESS POINT
 50' PUBLIC RW

SETBACKS

| | |
|-------------|-----|
| FRONT | 35' |
| REAR | 25' |
| SIDE | 10' |
| CORNER SIDE | 20' |

C1 R=25.00' L=21.03' N64°04'03" E 20.41'
 C2 R=50.00' L=12.24' N46°59'02" E 12.21'

PRELIMINARY
 NOT FOR RECORDATION,
 SALES OR CONVEYANCE

LEGEND

| | | | |
|-----|---------------------|-----|--------------------|
| EIP | EXISTING IRON PIPE | FE5 | FLARED END SECTION |
| IPS | IRON PIPE SET | WM | WATER METER |
| R/W | RIGHT OF WAY | CO | CLEAN OUT |
| N/F | NOW OR FORMERLY | FH | FIRE HYDRANT |
| EIS | EXISTING IRON STAKE | CB | CATCH BASIN |

