



COMMENTS: \_\_\_\_\_

<u>LANDSCAPE POSITIONS</u>	<u>GROUP</u>	<u>TEXTURES</u>	<u>.1955 LTAR</u>	<u>CONSISTENCE MOIST</u>	<u>WET</u>
R-RIDGE	I	S-SAND	1.2 - 0.8	VFR-VERY FRIABLE	NS-NON-STICKY
S-SHOULDER SLOPE		LS-LOAMY SAND		FR-FRIABLE	SS-SLIGHTLY STICKY
L-LINEAR SLOPE	II	SL-SANDY LOAM	0.8 - 0.6	FI-FIRM	S-STICKY
FS-FOOT SLOPE		L-LOAM		VFI-VERY FIRM	VS-VERY STICKY
N-NOSE SLOPE				EFI-EXTREMELY FIRM	NP-NON-PLASTIC
H-HEAD SLOPE	III	SI-SILT	0.6 - 0.3		SP-SLIGHTLY STICKY
CC-CONCLAVE SLOPE		SIL-SILT LOAM			P-PLASTIC
CV-CONVEX SLOPE		CL-CLAY LOAM			VP-VERY PLASTIC
T-TERRACE		SCL-SANDY CLAY LOAM			
FP-FLOOD PLAN	IV	SIC-SILTY CLAY	0.4 - 0.1		
		C-CLAY			
		SC-SANDY CLAY			

STRUCTURE  
 SG-SINGLE GRAIN  
 M- MASSIVE  
 CR-CRUMB  
 GR-GRANULAR  
 SBK-SUBANGULAR BLOCKY  
 ABK-ANGULAR BLOCKY  
 PL-PLATY  
 PR-PRISMATIC

MINERALOGY  
 SLIGHTLY EXPANSIVE  
 EXPANSIVE

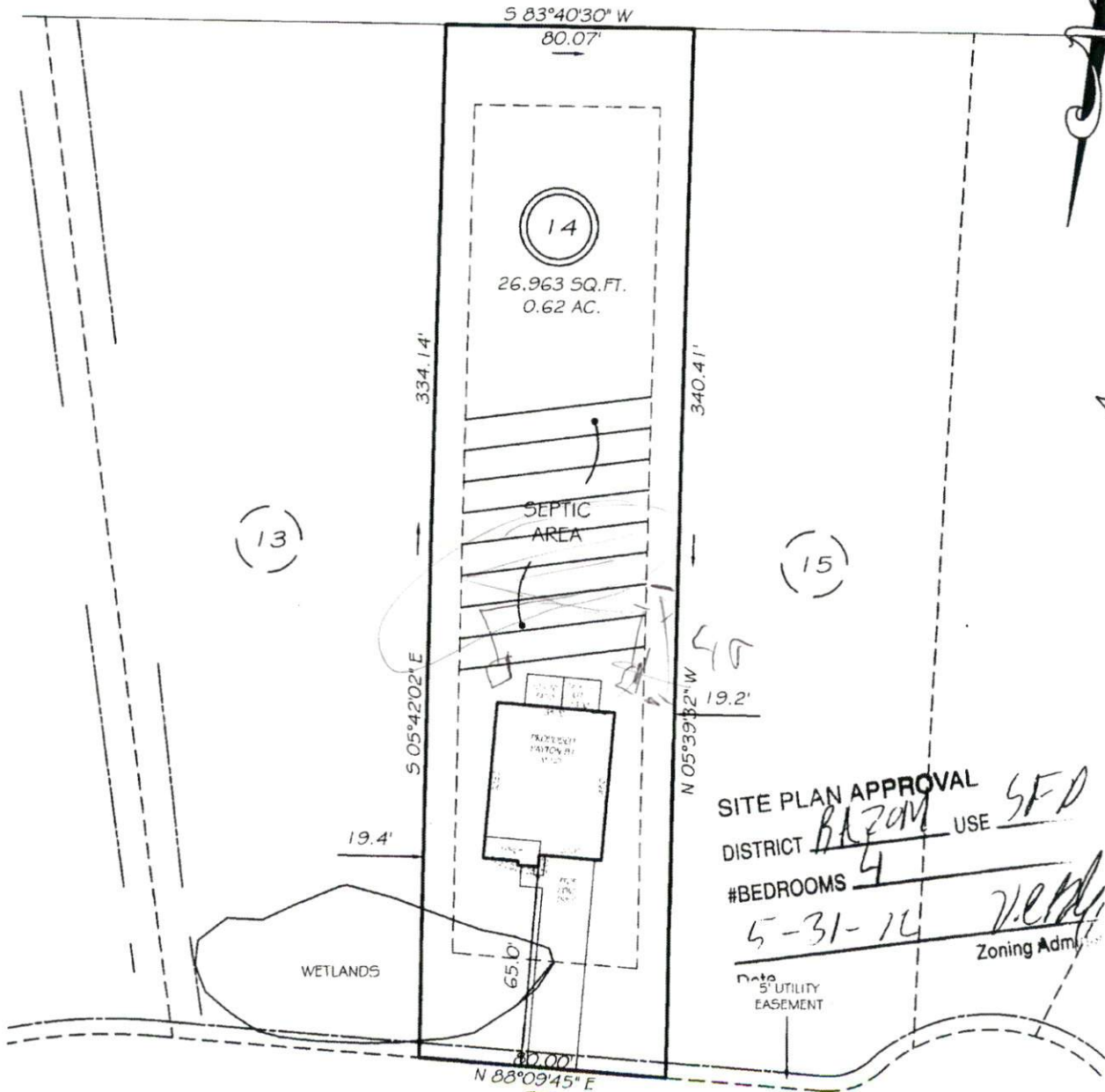
Show profile locations and other site features (dimensions, references or benchmark, and North)

A large grid for recording profile locations and site features. The grid is approximately 20 columns wide and 25 rows high. It is intended for drawing and recording site data.

I, MICHAEL P. GRIFFIN, certify that under my direction and supervision this map was drawn from an actual field survey; that the error of closure of the survey as calculated by coordinates is 1:10,000+; that the area shown hereon was calculated by coordinates.  
 Witness my hand and seal this day of MONTH 2012.

BK 2011 PG 575  
 HARRIETT CO. REGISTRY

N/F  
 WILLIAM & HEWLEN BUCHANAN  
 DB 1591 PAGE 800



SITE PLAN APPROVAL  
 DISTRICT BAZOM USE SFD  
 #BEDROOMS 4  
5-31-14 V.C.P.  
 Zoning Admin.

OLDE CYPRESS POINT  
 50' PUBLIC RW

SETBACKS

FRONT	35'
REAR	25'
SIDE	10'
CORNER SIDE	20'

WETLANDS SHOWN HEREON PER PLAN ENTITLED  
 'SURFACE WATER AND WETLANDS IMPACT MAP'  
 BY BURDETTE LAND CONSULTING, REVISED ON  
 12-12-11.

**PRELIMINARY**  
 NOT FOR RECORDATION,  
 SALES OR CONVEYANCE

LEGEND

EIP	EXISTING IRON PIPE	FES	FLARED END SECTION
IPS	IRON PIPE SET	WM	WATER METER
RW	RIGHT OF WAY	CO	CLEAN OUT
N/F	NOW OR FORMERLY	FH	FIRE HYDRANT
EIS	EXISTING IRON STAKE	CB	CATCH BASIN

