

**PLOT PLAN FOR
COMFORT HOMES
HECTOR'S CREEK TOWNSHIP
HARNETT COUNTY
NORTH CAROLINA**

PLAT NORTH
PLAT CAB. F SLIDE 170-B



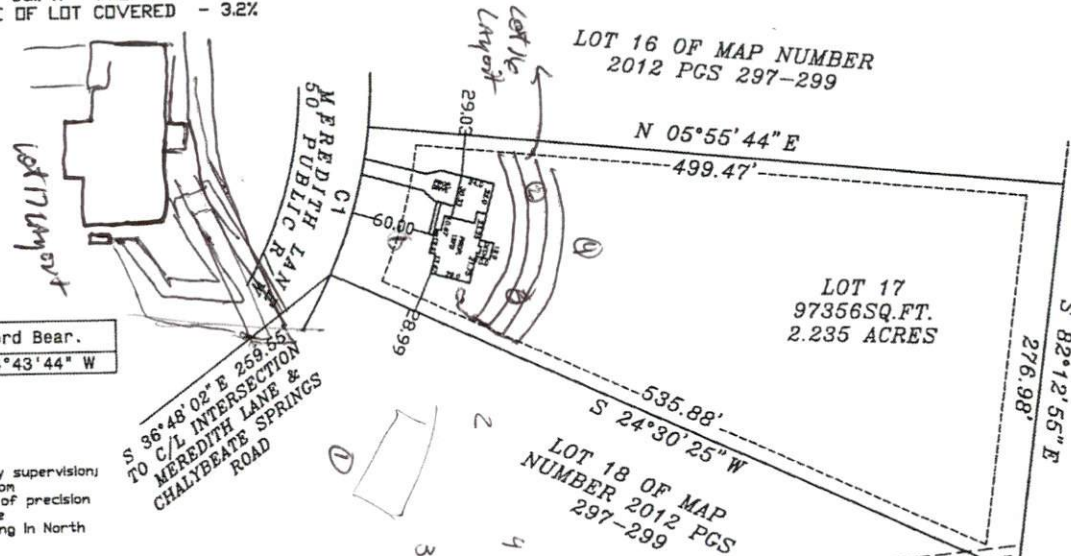
NOTE: THIS PROPERTY IS SUBJECT TO EASEMENTS AND RESTRICTIONS OF RECORD. PRELIMINARY PLAT- NOT FOR RECORDATION, CONVEYANCES, OR SALES.

IMPERVIOUS SURFACE COVERAGE
2012 SQ.FT. - HOUSE, PORCH & GARAGE
1113 SQ.FT. - WALK & DRIVEWAY
3125 TOTAL SQ.FT. - PROPOSED COVERAGE
PERCENTAGE OF LOT COVERED - 3.2%



NOTE: BEING LOT 17 OF MEREDITH'S STATION, RECORDED IN MAP BOOK 2012, PAGES 297-299.
NOTE: AREA COMPUTED BY COORDINATE METHOD.
NOTE: NCGS MONUMENT WITHIN 2000' HAVE BEEN DESTROYED.

Curve	Radius	Length	Chord	Chord Bear.
C1	335.00'	108.00'	107.53'	N 74°43'44" W



NOW OR FORMERLY
RONALD J. DEAN
DB 1317 PG 485

NOW OR FORMERLY TOLLAN
I. WADE, ET UX
DB 2205 PG 330

DRAWN BY: DOW & BGW
CHECKED BY: DOW
DATE: 05-11-2012
SCALE: 1" = 100'
JOB: MERED CF
FB:

"I, Danny D. Williams, certify that this map was drawn under my supervision; that the boundaries not surveyed are indicated as drawn from information in Map Number 2012 Pages 297-298, that the ratio of precision or positional accuracy is 1/10,000; and that this map meets the requirements of The Standards of Practice for Land Surveying in North Carolina (21 NCAC 56.1600)."

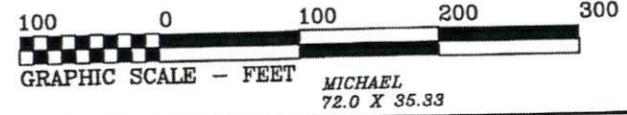
This 11th day of MAY, 2012.

Seal



NOTE: NOT AN ACTUAL FIELD SURVEY. INFORMATION TAKEN FROM MAP NUMBER 2012 PAGES 297-298.

WILLIAMS - PEARCE & ASSOC., P.A.
P. O. BOX 892
ZEBULON, N. C.
PHONE: 269-9605



Handwritten notes:
1/2012
0-40 S
40-48 SW
3/11-18
L-410
0-30 S
30-48 SW
40-75 SW
3-11
Now or Formerly
L-410
L-410
L-410