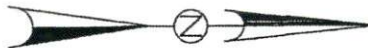


NOTE: THIS PROPERTY IS SUBJECT TO EASEMENTS AND RESTRICTIONS OF RECORD. PRELIMINARY PLAT- NOT FOR RECORDATION, CONVEYANCES, OR SALES.

IMPERVIOUS SURFACE COVERAGE  
 1784 SQ.FT. - HOUSE, PORCH & GARAGE  
 1007 SQ.FT. - WALK & DRIVEWAY  
 2791 TOTAL SQ.FT. - PROPOSED COVERAGE  
 PERCENTAGE OF LOT COVERED - 3.4%

PLAT NORTH  
 PLAT CAB. F SLIDE 170-B

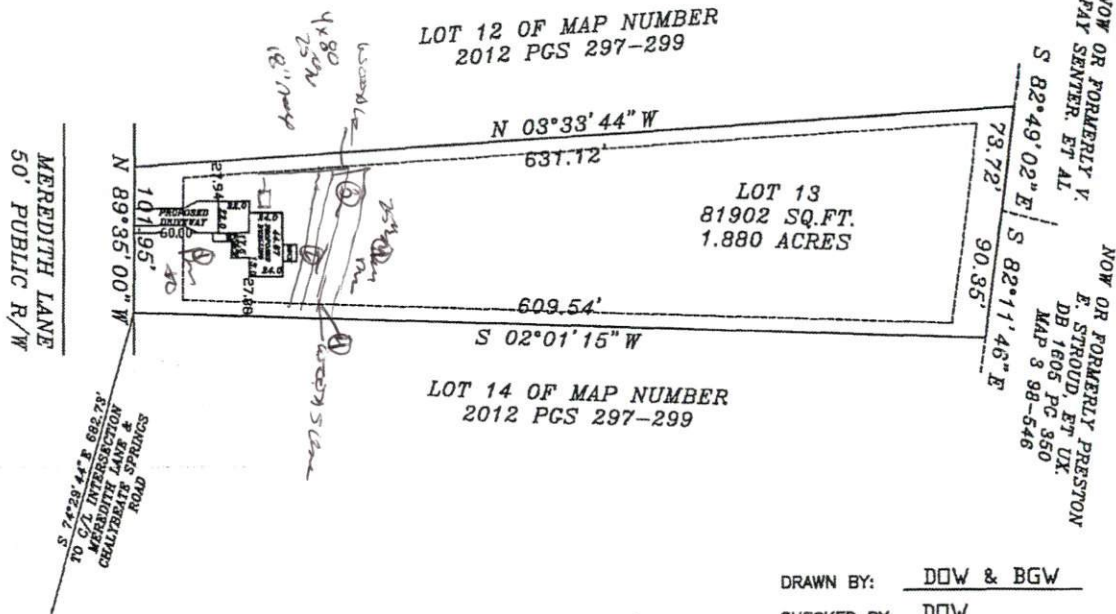


PLOT PLAN FOR  
 COMFORT HOMES  
 HECTOR'S CREEK TOWNSHIP  
 HARNETT COUNTY  
 NORTH CAROLINA

NOTE: BEING LOT 13 OF MEREDITH'S STATION, RECORDED IN MAP BOOK 2012, PAGES 297-299.

NOTE: AREA COMPUTED BY COORDINATE METHOD.

NOTE: NCGS MONUMENT WITHIN 2000' HAVE BEEN DESTROYED.



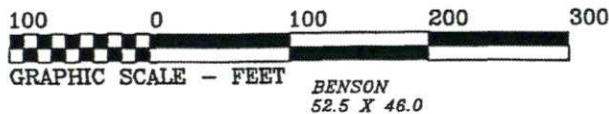
"I, Danny D. Williams, certify that this map was drawn under my supervision that the boundaries not surveyed are indicated as drawn from information in Map Number 2012 Pages 297-299, that the ratio of precision or positional accuracy is 1/40,000 and that this map meets the requirements of The Standards of Practice for Land Surveying in North Carolina (21 NCAC 56.1600)." This 11th day of MAY, 2012.

Seal

*Danny D. Williams*  
 SEAL  
 DANNY D. WILLIAMS  
 Professional Land Surveyor  
 No. 2647

NOTE: NOT AN ACTUAL FIELD SURVEY. INFORMATION TAKEN FROM MAP NUMBER 2012 PAGES 297-299.

WILLIAMS - PEARCE & ASSOC., P.A.  
 P. O. BOX 892  
 ZEBULON, N. C.  
 PHONE: 269-9605



DRAWN BY: DOW & BGW  
 CHECKED BY: DOW  
 DATE: 05-11-2012  
 SCALE: 1" = 100'  
 JOB: MERED CF  
 FB: