

SOUTHEASTEN SOIL & ENVIRONMENTAL ASSOC, INC.

PROPOSED SUBSURFACE WASTE DISPOSAL SYSTEM DETAIL SHEET

SUBDIVISION Kellan Farms

LOT 8

INITIAL SYSTEM Approved 25% reduction

REPAIR pump to PPEPS

DISTRIBUTION P-box

DISTRIBUTION P-box

BENCHMARK 100.00

LOCATION pt on line

NO. BEDROOMS 4

initial proposed LTAR = 0.4 gpd/ft²
 repair " " = 0.3 gpd/ft²

LINE FLAG COLOR ELEVATION ACTUAL LENGTH

Initial
 18" pipe

1	Y	99.92	70'
2	W	99.92	70'
3	Y	99.92	70'
4	W	99.92	70'
5	Y	99.84	70'
6	W	99.84	—
			<u>350</u>
7	W	100.75	35'
8	W	100.75	35'
9	Y	100.75	35'
			<u>105'</u>

BY M. FAKEP

DATE 8/23/11

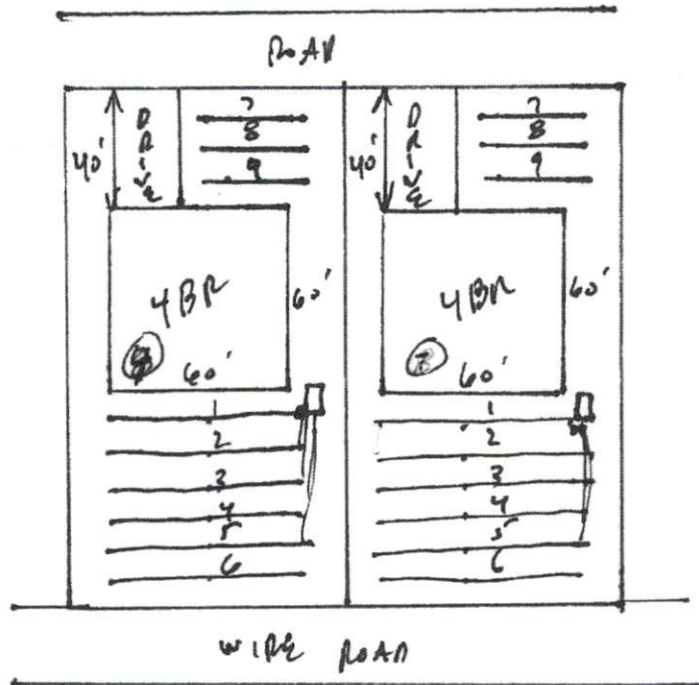
Install depth can vary
 between 18" & 24"

Typ Profile initial
 0-12 US (USF, wgs)
 12-43 SCL (F, cks)
 CR2 43'

Southeastern Soil & Environmental Associates, Inc.

P.O. Box 9321
Fayetteville, NC 28311
Phone/Fax (910) 822-4540
Email mike@southeasternsoil.com

Keeler Forms
Proposed Septic Layouts
LOTS
8 + 9



40' front setback

1" = 60'