

COMMENTS: _____

<u>LANDSCAPE POSITIONS</u>	<u>GROUP</u>	<u>TEXTURES</u>	<u>.1955 LTAR</u>	<u>CONSISTENCE MOIST</u>	<u>WET</u>
R-RIDGE	I	S-SAND	1.2 - 0.8	VFR-VERY FRIABLE FR-FRIABLE	NS-NON-STICKY SS-SLIGHTLY STICKY
S-SHOULDER SLOPE L-LINEAR SLOPE		LS-LOAMY SAND			
FS-FOOT SLOPE	II	SL-SANDY LOAM	0.8 - 0.6	FI-FIRM VFI-VERY FIRM EFI-EXTREMELY FIRM	S-STICKY VS-VERY STICKY NP-NON-PLASTIC SP-SLIGHTLY STICKY
N-NOSE SLOPE H-HEAD SLOPE		L-LOAM			
CC-CONCLAVE SLOPE	III	SI-SILT	0.6 - 0.3		P-PLASTIC VP-VERY PLASTIC
CV-CONVEX SLOPE		SIL-SILT LOAM			
T-TERRACE	IV	CL-CLAY LOAM	0.4 - 0.1		
FP-FLOOD PLAN		SCL-SANDY CLAY LOAM			
		SIC-SILTY CLAY C-CLAY SC-SANDY CLAY			

STRUCTURE

- SG-SINGLE GRAIN
- M- MASSIVE
- CR-CRUMB
- GR-GRANULAR
- SBK-SUBANGULAR BLOCKY
- ABK-ANGULAR BLOCKY
- PL-PLATY
- PR-PRISMATIC

MINERALOGY

- SLIGHTLY EXPANSIVE
- EXPANSIVE

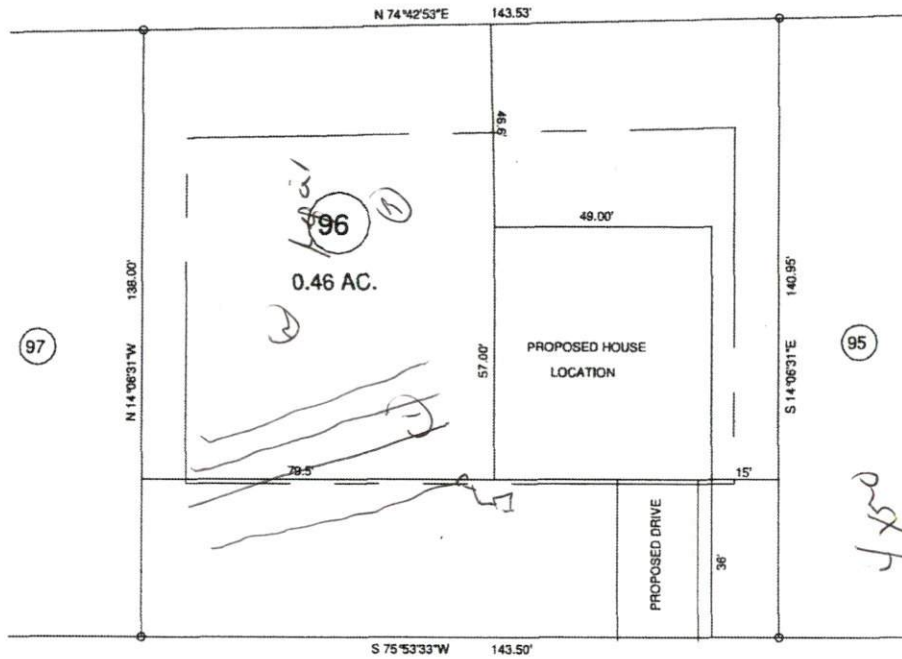
Show profile locations and other site features (dimensions, references or benchmark, and North)

A large grid for site profile locations and features. The grid is approximately 20 columns wide and 25 rows high. It is intended for drawing site profiles, including dimensions, references, benchmarks, and orientation (North).

MAP NO. 2011-411

SITE PLAN APPROVAL

DISTRICT PADDOX USE SFD
#BEDROOMS 4
1-10-12
Zoning Administrator



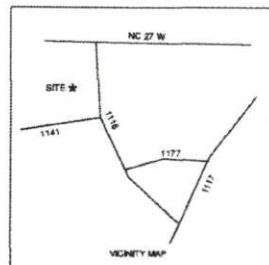
Handwritten notes: 450, 76-18

MAP REFERENCE: MAP NO. 2011-411

"HORSE WHISPERER LANE" 50' R/W

MINIMUM BUILDING SET BACKS

- FRONT YARD — 35'
- REAR YARD — 25'
- SIDE YARD — 12'
- CORNER LOT SIDE YARD — 20'
- MAXIMUM HEIGHT — 35'



TOWNSHIP BARBEQUE		COUNTY HARNETT		SCALE: 1" = 40'		SURVEYED BY:		FIELD BOOK
STATE: NORTH CAROLINA		DATE: DECEMBER 28, 2011		DRAWN BY: RVB		DRAWING NO.		11406
ZONE RA-20R		WATERSHED DISTRICT		TAX PARCEL ID#		CHECKED & CLOSURE BY:		

JOB NO. 11406

BENNETT SURVEYS, INC.
1662 CLARK RD., LILLINGTON, N.C. 27546
(910) 893-5252

C-1080