

COMMENTS: _____

LANDSCAPE POSITIONS	GROUP	TEXTURES	.1955 LTAR	CONSISTENCE MOIST	WET
R-RIDGE	I	S-SAND	1.2 - 0.8	VFR-VERY FRIABLE	NS-NON-STICKY
S-SHOULDER SLOPE		LS-LOAMY SAND		FR-FRIABLE	SS-SLIGHTLY STICKY
L-LINEAR SLOPE	II	SL-SANDY LOAM	0.8 - 0.6	FI-FIRM	S-STICKY
FS-FOOT SLOPE		L-LOAM		VFI-VERY FIRM	VS-VERY STICKY
N-NOSE SLOPE				EFI-EXTREMELY FIRM	NP-NON-PLASTIC
H-HEAD SLOPE	III	SI-SILT	0.6 - 0.3		SP-SLIGHTLY STICKY
CC-CONCLAVE SLOPE		SIL-SILT LOAM			P-PLASTIC
CV-CONVEX SLOPE		CL-CLAY LOAM			VP-VERY PLASTIC
T-TERRACE		SCL-SANDY CLAY LOAM			
FP-FLOOD PLAN	IV	SIC-SILTY CLAY	0.4 - 0.1		
		C-CLAY			
		SC-SANDY CLAY			

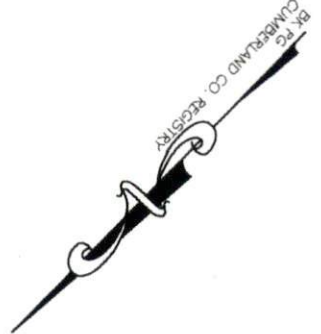
STRUCTURE
 SG-SINGLE GRAIN
 M-MASSIVE
 CR-CRUMB
 GR-GRANULAR
 SBK-SUBANGULAR BLOCKY
 ABK-ANGULAR BLOCKY
 PL-PLATY
 PR-PRISMATIC

MINERALOGY
 SLIGHTLY EXPANSIVE
 EXPANSIVE

Show profile locations and other site features (dimensions, references or benchmark, and North)

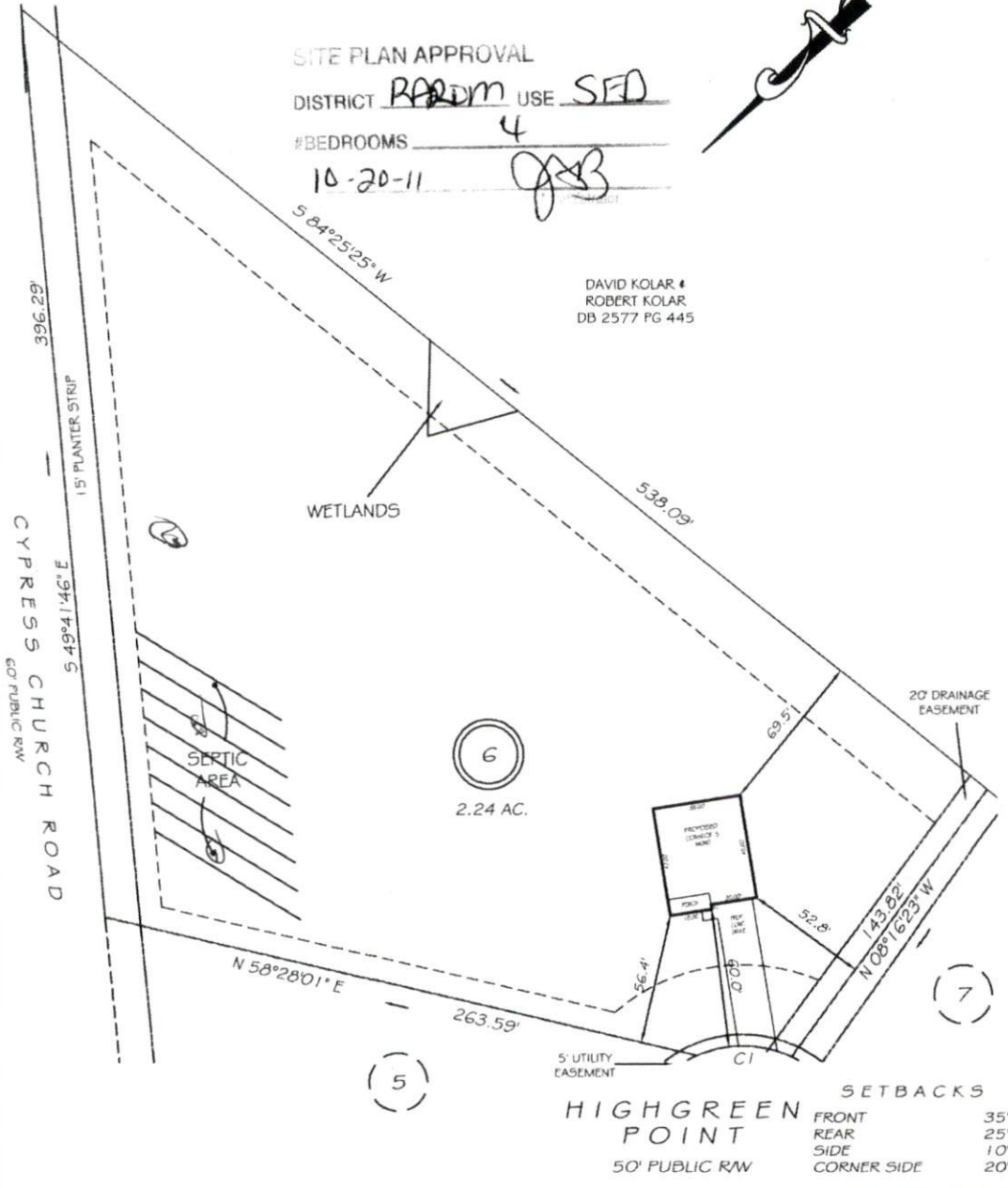
A large grid for recording profile locations and site features. The grid consists of 20 columns and 20 rows of empty squares, intended for drawing or recording data.

4 MICHAEL P. GRIFFIN, certify that under my direction and supervision this map was drawn from an actual field survey; that the error of closure of the survey as calculated by coordinates is 1:10,000+; that the area shown hereon was calculated by coordinates.
 Witness my hand and seal this day of MONTH 2011.



SITE PLAN APPROVAL
 DISTRICT RADM USE SFD
 #BEDROOMS 4
10-20-11 MPG

DAVID KOLAR #
 ROBERT KOLAR
 DB 2577 PG 445



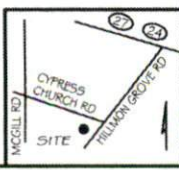
SETBACKS
 FRONT 35'
 REAR 25'
 SIDE 10'
 CORNER SIDE 20'
 50' PUBLIC RW

CI R=50.00' L=42.11' N45°54'04"E 40.88'

PRELIMINARY
 NOT FOR RECORDATION,
 SALES OR CONVEYANCE

LEGEND

EIP	EXISTING IRON PIPE	FES	FLARED END SECTION
IP5	IRON PIPE SET	WM	WATER METER
RW	RIGHT OF WAY	CO	CLEAN OUT
N/F	NOW OR FORMERLY	FH	FIRE HYDRANT
EIS	EXISTING IRON STAKE	CB	CATCH BASIN



GRIFFIN LAND SURVEYING, INC.
 P.O. BOX 148
 FUQUAY-VARINA, NC 27528
 (919) - 567 - 1983

PLOT PLAN
 FOR
D.R. HORTON
CYPRESS POINTE
LOT 6
 105 HIGHGREEN POINT
 CAMERON, N.C.
 CUMBERLAND CO. JOHNSONVILLE TOWNSHIP

DRAWN BY <u>NMF</u>	DATE <u>10/17/11</u>
CHECKED BY <u>MPG</u>	SCALE <u>1" = 60'</u>