

COMMENTS: _____

LANDSCAPE POSITIONS

- R-RIDGE
- S-SHOULDER SLOPE
- L-LINEAR SLOPE
- FS-FOOT SLOPE
- N-NOSE SLOPE
- H-HEAD SLOPE
- CC-CONCLAVE SLOPE
- CV-CONVEX SLOPE
- T-TERRACE
- FP-FLOOD PLAN

GROUP

TEXTURES

1955 LTAR

CONSISTENCE MOIST

WBT

I	S-SAND LS-LOAMY SAND	1.2 - 0.8
II	SL-SANDY LOAM L-LOAM	0.8 - 0.6
III	SI-SILT SIL-SILT LOAM CL-CLAY LOAM SCL-SANDY CLAY LOAM	0.6 - 0.3
IV	SIC-SILTY CLAY C-CLAY SC-SANDY CLAY	0.4 - 0.1

- VFR-VERY FRIABLE
- FR-FRIABLE
- FI-FIRM
- VFI-VERY FIRM
- EFI-EXTREMELY FIRM

- NS-NON-STICKY
- SS-SLIGHTY STICKY
- S-STICKY
- VS-VERY STICKY
- NP-NON-PLASTIC
- SP-SLIGHTLY STICKY
- P-PLASTIC
- VP-VERY PLASTIC

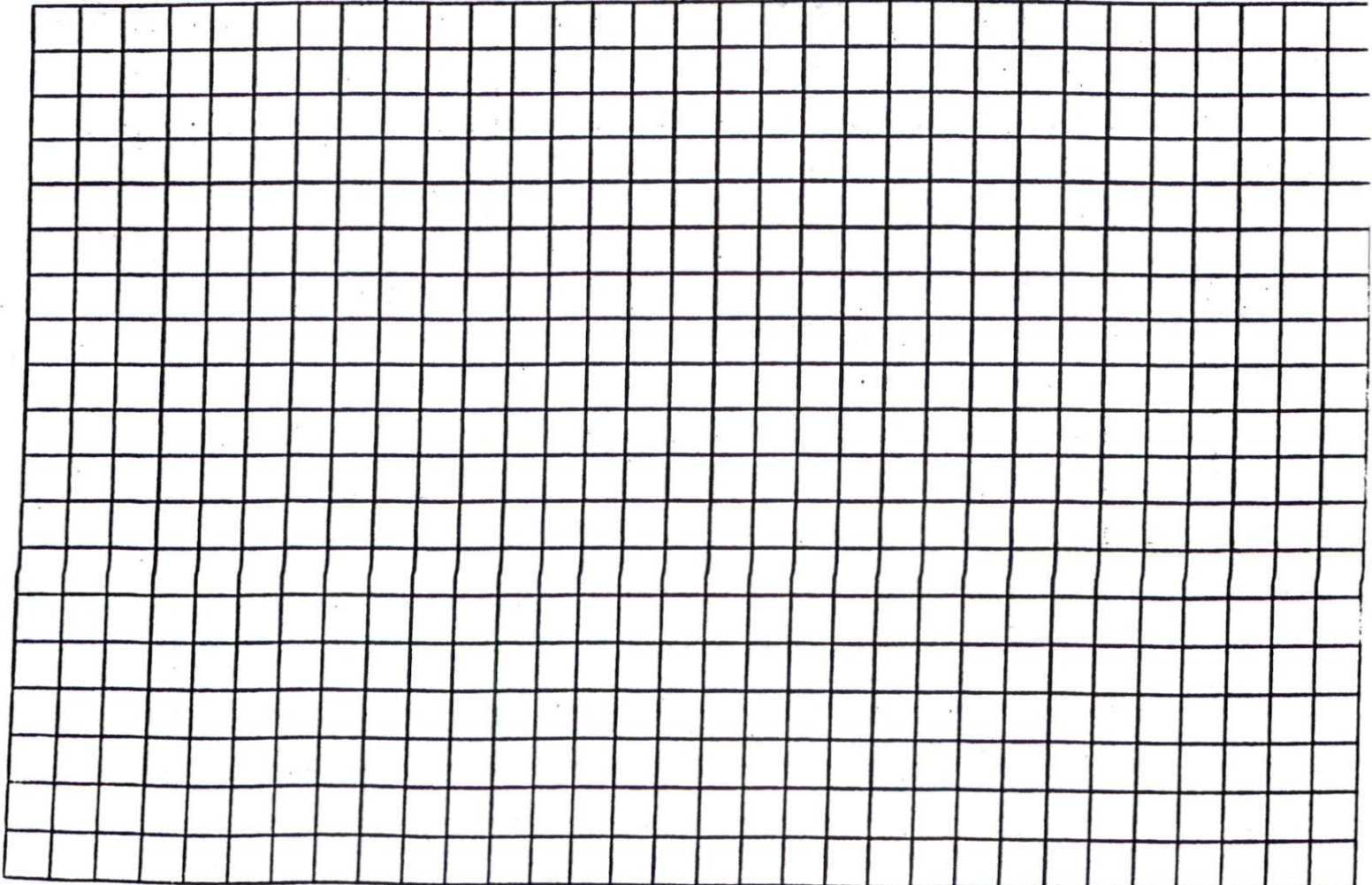
STRUCTURE

- SG-SINGLE GRAIN
- M-MASSIVE
- CR-CRUMB
- GR-GRANULAR
- SBK-SUBANGULAR BLOCKY
- ABK-ANGULAR BLOCKY
- PL-FLATY
- PR-PRISMATIC

MINERALOGY

- SLIGHTLY EXPANSIVE
- EXPANSIVE

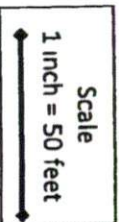
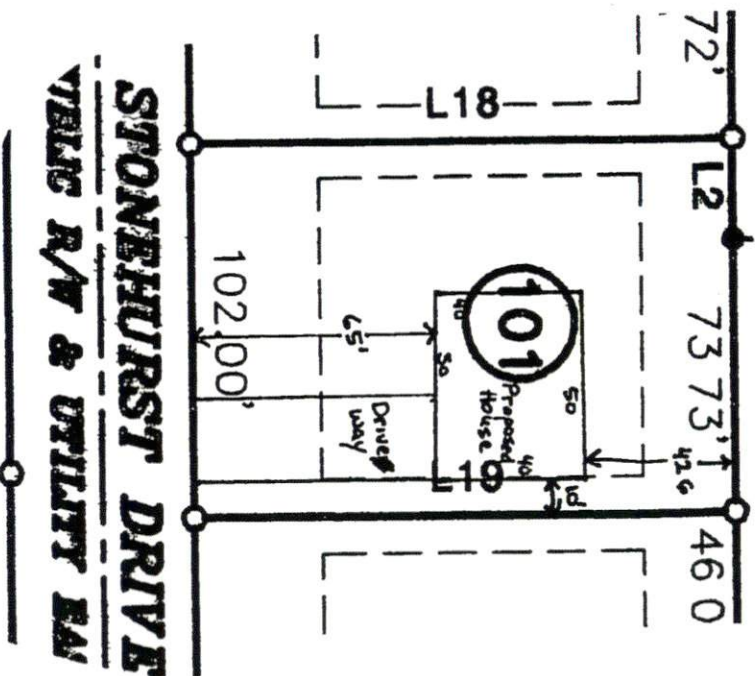
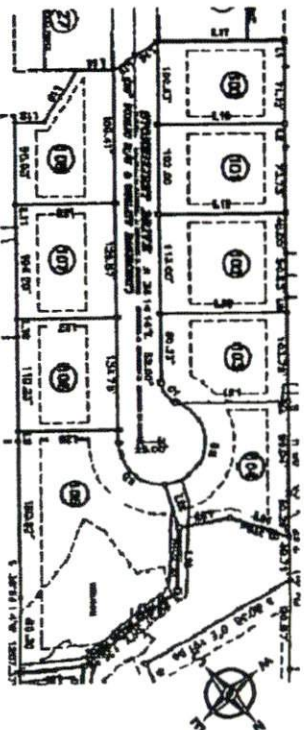
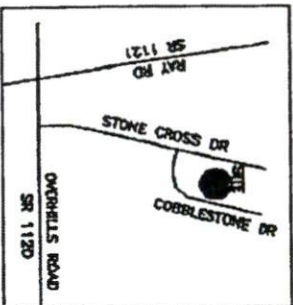
Show profile locations and other site features (dimensions, references or benchmark, and North)



Site Plan

Stone Cross Subdivision, Section 2, Phase 2

Lot # 101



SITE PLAN APPROVAL SEP
 DISTRICT R# 208 USE
 #BEDROOMS 4
 Date 6-23-11 Zoning Adr- W.C. J.P.

SEPTIC SYSTEM LAYOUT DESIGN

Subdivision Stone Cross Lot # 101
Bedrooms 4 Daily Flow 4800 gallons
House Footprint 30ft x 50ft Setbacks 65ft Front, 10ft right side

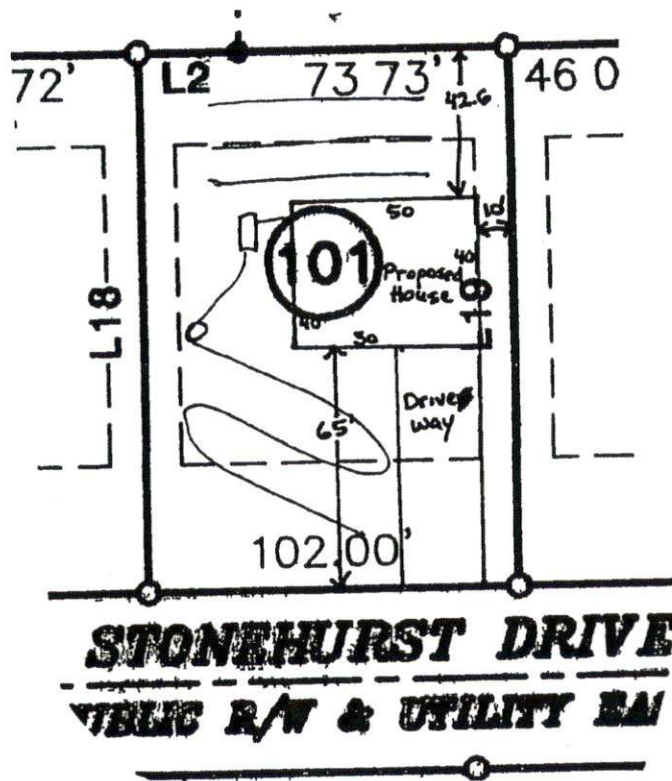
Proposed System

Initial System

Gravity to conventional drainlines 1 X 200 ft (X3ft wide), LTAR 0.8 gal/day/sqft
Install on-contour at 18-24 inches below surface

Repair System

Pump to conventional drainlines 3 X 70 ft (X3ft wide), LTAR 0.8 gal/day/sqft
Install on-contour at 18-24 inches below surface



Scale
1 inch = 50 feet