

SOUTHEASTEN SOIL & ENVIRONMENTAL ASSOC, INC.

PROPOSED SUBURBAN WASTE DISPOSAL SYSTEM DETAIL SHEET

SUBDIVISION Town #
 INITIAL SYSTEM pump to approx 25% reduction
 DISTRIBUTION serial
 BENCHMARK 100.0
 NO. BEDROOMS 3
 LOCATION fr. town - 87/87
 DISTRIBUTION serial
 REPAIR pump to approx 25% reduction
 LOT 85/86 combined
 ACTUAL LENGTH Proposed LTR = 0.35 gal/hr

* Revised

LINE	FLAG COLOR	ELEVATION	ACTUAL LENGTH
1	B	96.25	45'
2	W	95.92	47'
3	B	94.84	50'
4	W	94.17	68'
5A	B	93.50	48'
5B	B	93.50	32'
6	W	93.00	90'
7	B	92.42	2'
8	W	91.92	50'
9	B	91.50	50'
			<u>272'</u>

BY M. Falser

DATE 12/2/10

SOUTHEASTERN SOIL & ENVIRONMENTAL ASSOC, INC.

PROPOSED SUBSURFACE WASTE DISPOSAL SYSTEM DETAIL SHEET

SUBDIVISION Troyer Pt

LOT 85/86 combined

INITIAL SYSTEM pump to approval 25% collect.

REPAIR pump to approval 25% collect.

DISTRIBUTION serial

DISTRIBUTION serial

BENCHMARK 100.0

LOCATION front corner 84/85-

NO. BEDROOMS 3

proposed drain = 0.35 gpd/ft²

LINE FLAG COLOR ELEVATION ACTUAL LENGTH

Inches

1	B	96.25	45'
2	W	95.92	47'
3	B	94.84	50'
4	W	94.17	65'
5A	B	93.50	48'
			<u>258'</u>
5B	B	93.50	32'
6	W	93.00	90'
7	B	92.42	96'
8	W	91.92	42'
			<u>289'</u>

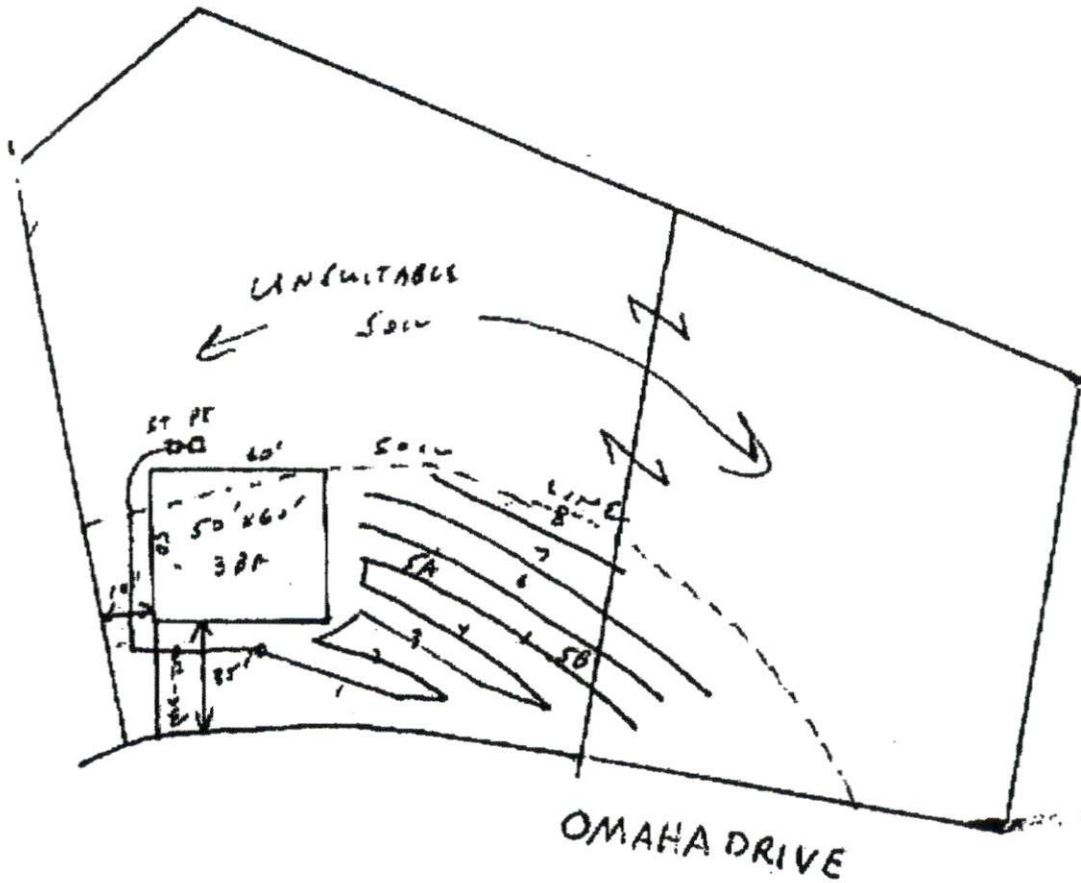
BY _____

DATE _____

Southeastern Soil & Environmental Associates, Inc.

P.O. Box 9321
Fayetteville, NC 28311
Phone/Fax (910) 822-4540
Email mfa@southeasternsoil.com

Lot 85/86
proposed sept. layout
Tingen Pt



Southeastern Soil & Environmental Associates, Inc.

P.O. Box 9321
Fayetteville, NC 28311
Phone/Fax (910) 822-4540
Email mike@southeasternsoil.com

Lot 35/86
proposed sept. layout
Tinson Pt

