



COMMENTS: \_\_\_\_\_

LANDSCAPE POSITIONS

R-RIDGE  
 S-SHOULDER SLOPE  
 L-LINEAR SLOPE  
 FS-FOOT SLOPE  
 N-NOSE SLOPE  
 H-HEAD SLOPE  
 CC-CONCLAVE SLOPE  
 CV-CONVEX SLOPE  
 T-TERRACE  
 FP-FLOOD PLAN

GROUP

I  
 II  
 III  
 IV

TEXTURES

S-SAND  
 LS-LOAMY SAND  
 SL-SANDY LOAM  
 L-LOAM  
 SI-SILT  
 SIL-SILT LOAM  
 CL-CLAY LOAM  
 SCL-SANDY CLAY LOAM  
 SIC-SILTY CLAY  
 C-CLAY  
 SC-SANDY CLAY

1955 LTAR

1.2 - 0.8  
 0.8 - 0.6  
 0.6 - 0.3  
 0.4 - 0.1

CONSISTENCE MOIST

VFR-VERY FRIABLE  
 FR-FRIABLE  
 FI-FIRM  
 VFI-VERY FIRM  
 EFI-EXTREMELY FIRM

WBT

NS-NON-STICKY  
 SS-SLIGHTLY STICKY  
 S-STICKY  
 VS-VERY STICKY  
 NP-NON-PLASTIC  
 SP-SLIGHTLY STICKY  
 P-PLASTIC  
 VP-VERY PLASTIC

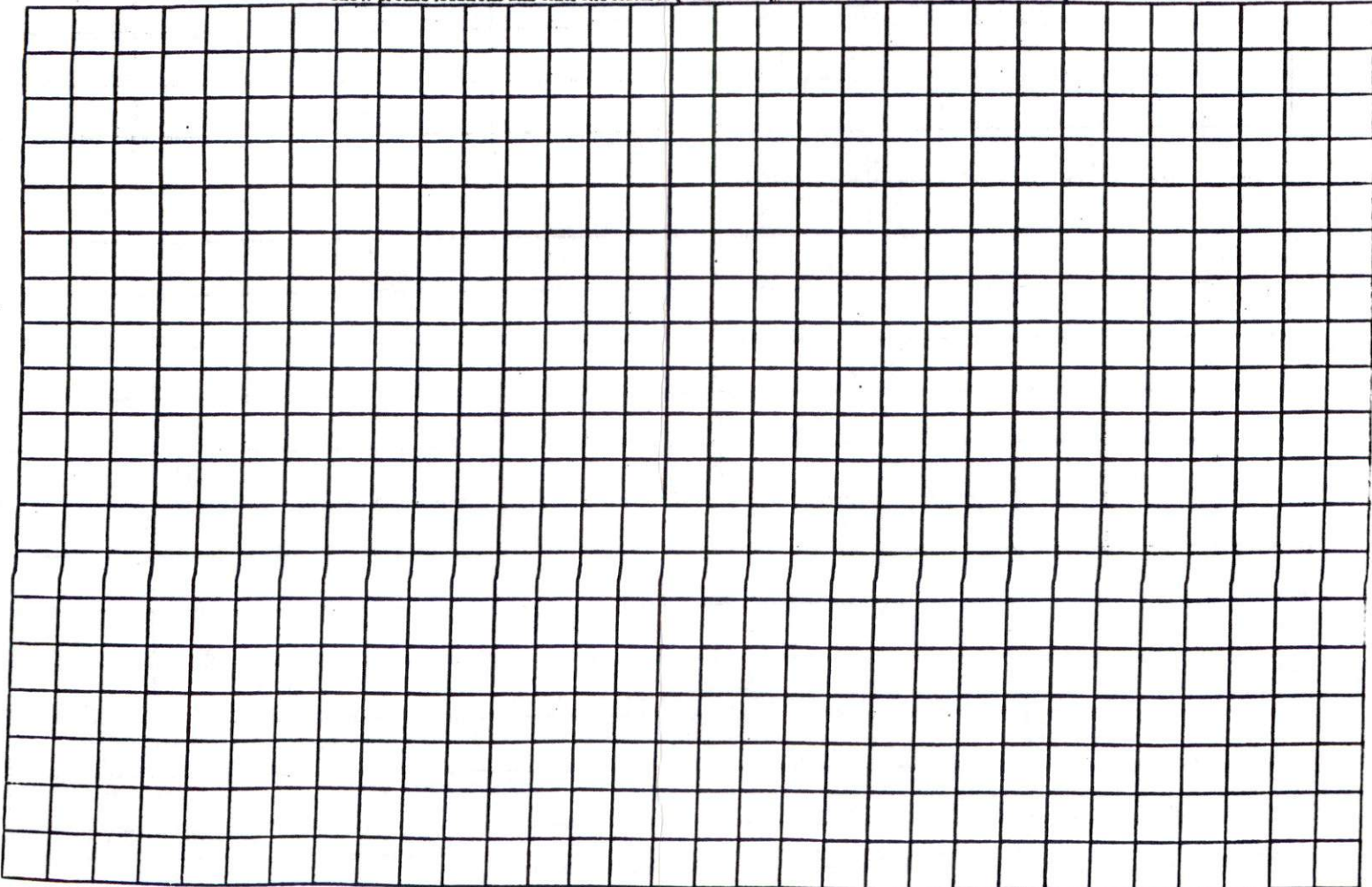
STRUCTURE

SG-SINGLE GRAIN  
 M-MASSIVE  
 CR-CRUMB  
 GR-GRANULAR  
 SBK-SUBANGULAR BLOCKY  
 ABK-ANGULAR BLOCKY  
 PL-PLATY  
 PR-PRISMATIC

MINERALOGY

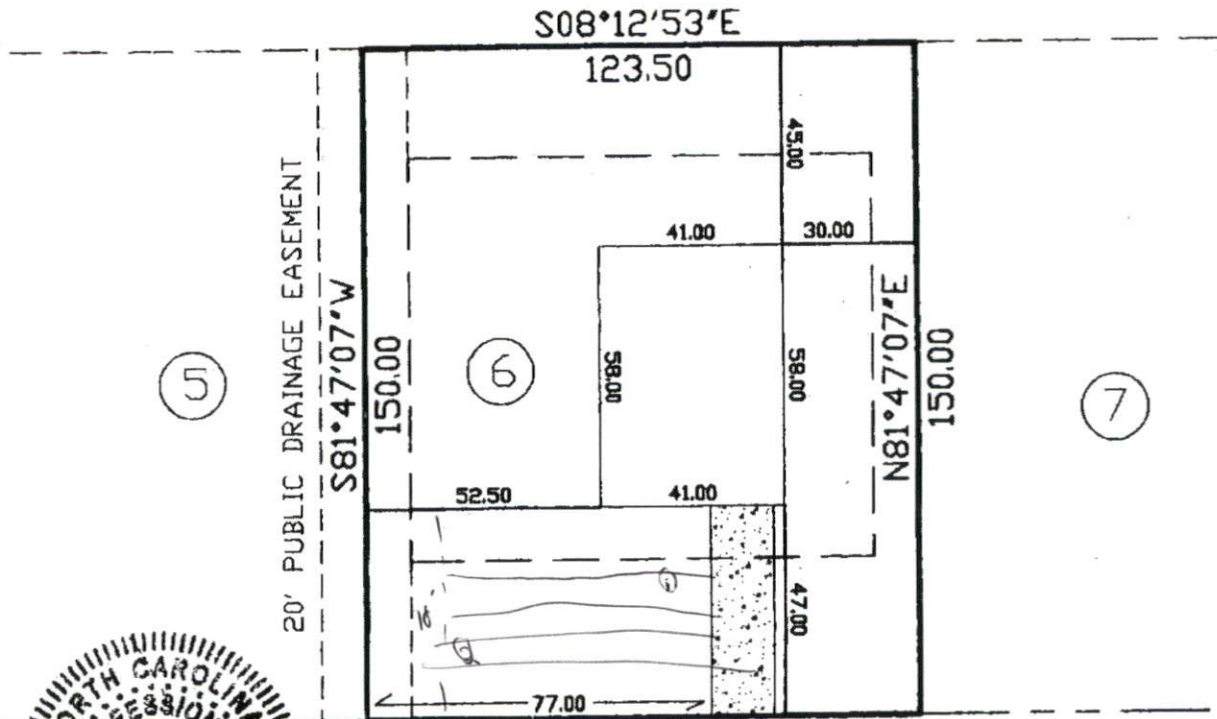
SLIGHTLY EXPANSIVE  
 EXPANSIVE

Show profile locations and other site features (dimensions, references or benchmark, and North)





10 500 25 1.5



*Charlie T. Carpenter L-4488  
9/26/10*

THIS MAP WAS PREPARED FROM RECORDS DATA, AS NOTED, AND FROM OTHER SOURCES PROVIDED BY THE OWNER. THIS IS A PRELIMINARY SITE PLAN, INTENDED FOR PLANNING USE ONLY AND DOES NOT REPRESENT A SURVEY MADE BY THIS OFFICE. THIS MAP IS NOT INTENDED FOR RECORDATION, CONVEYANCES, OR SALES.

**Charlie T. Carpenter, P.L.S.**  
Professional Land Surveyor

1940 Juniper Church Road  
Four Oaks, NC 27524  
(919) 963-2909  
(919) 320-5281

PRELIMINARY SITE PLAN FOR:  
**WYNN CONSTRUCTION**

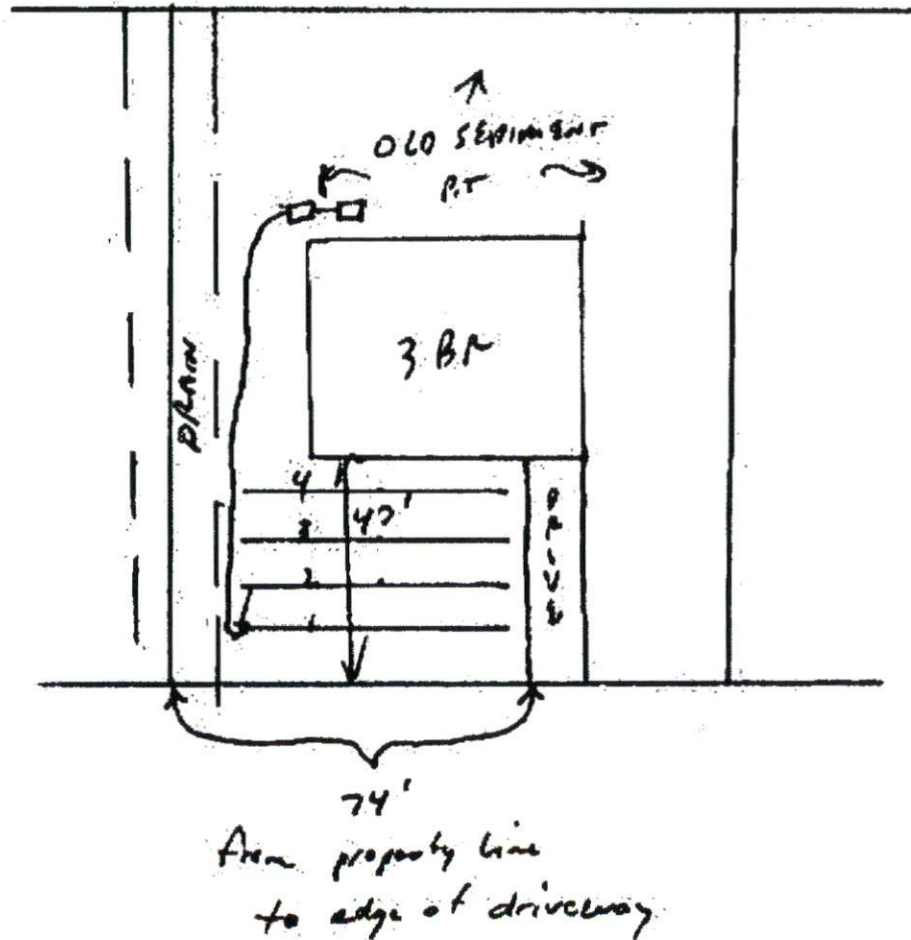
PIN 9587-53-9130.000  
PARCEL ID 039586 0024 44  
LOT 6 CAMERON PINES S/D  
PB2007 PG1002  
9/26/10  
1"=40'

173 CAMERON PINES DRIVE  
SANFORD, NC 27330

# Southeastern Soil & Environmental Associates, Inc.

P.O. Box 9321  
Fayetteville, NC 28311  
Phone/Fax (910) 822-4540  
Email mike@southeasternsoil.com

Cameron Pines  
Lot 6  
proposed septic layout



47' front house setback

1" = 40'

SOUTHEASTERN SOIL & ENVIRONMENTAL ASSOC, INC.

PROPOSED SUBSURFACE WASTE DISPOSAL SYSTEM DETAIL SHEET

SUBDIVISION Cameron Pines LOT 6  
INITIAL SYSTEM pump to approved 25% reduction REPAIR pump to approved 25% reduction  
DISTRIBUTION D-box DISTRIBUTION D-box  
BENCHMARK 100.0 LOCATION front corner 5/6  
NO. BEDROOMS 3  
proposed UTA = 0.8 gal/ft<sup>2</sup>

<u>LINE</u>	<u>FLAG COLOR</u>	<u>ELEVATION</u>	<u>ACTUAL LENGTH</u>
1 2	P	97.25	57'
	W	95.75	57'
			114'
3	P	94.92	57'
4	W	94.34	57'
			114'

Initial

BY M. SAKKA DATE 09/2010

\* Install from 18-36 inches

Typical Note  
0-54 + 5/65 (VF, w-1)  
C12 354"