

COMMENTS: _____

LANDSCAPE POSITIONS	GROUP	TEXTURES	1955 LTAR	CONSISTENCE MOIST	WBT
R-RIDGE	I	S-SAND	1.2 - 0.8	VFR-VERY FRIABLE	NS-NON-STICKY
S-SHOULDER SLOPE		LS-LOAMY SAND		FR-FRIABLE	SS-SLIGHTLY STICKY
L-LINEAR SLOPE	II	SL-SANDY LOAM	0.8 - 0.6	FI-FIRM	S-STICKY
FS-FOOT SLOPE		L-LOAM		VFI-VERY FIRM	VS-VERY STICKY
N-NOSE SLOPE	III	SI-SILT	0.6 - 0.3	EFI-EXTREMELY FIRM	NP-NON-PLASTIC
H-HEAD SLOPE		SIL-SILT LOAM		SP-SLIGHTLY STICKY	
CC-CONCLAVE SLOPE		CL-CLAY LOAM		P-PLASTIC	
CV-CONVEX SLOPE		SCL-SANDY CLAY LOAM		VP-VERY PLASTIC	
T-TERRACE	IV	SIC-SILTY CLAY	0.4 - 0.1		
FP-FLOOD PLAN		C-CLAY			
		SC-SANDY CLAY			

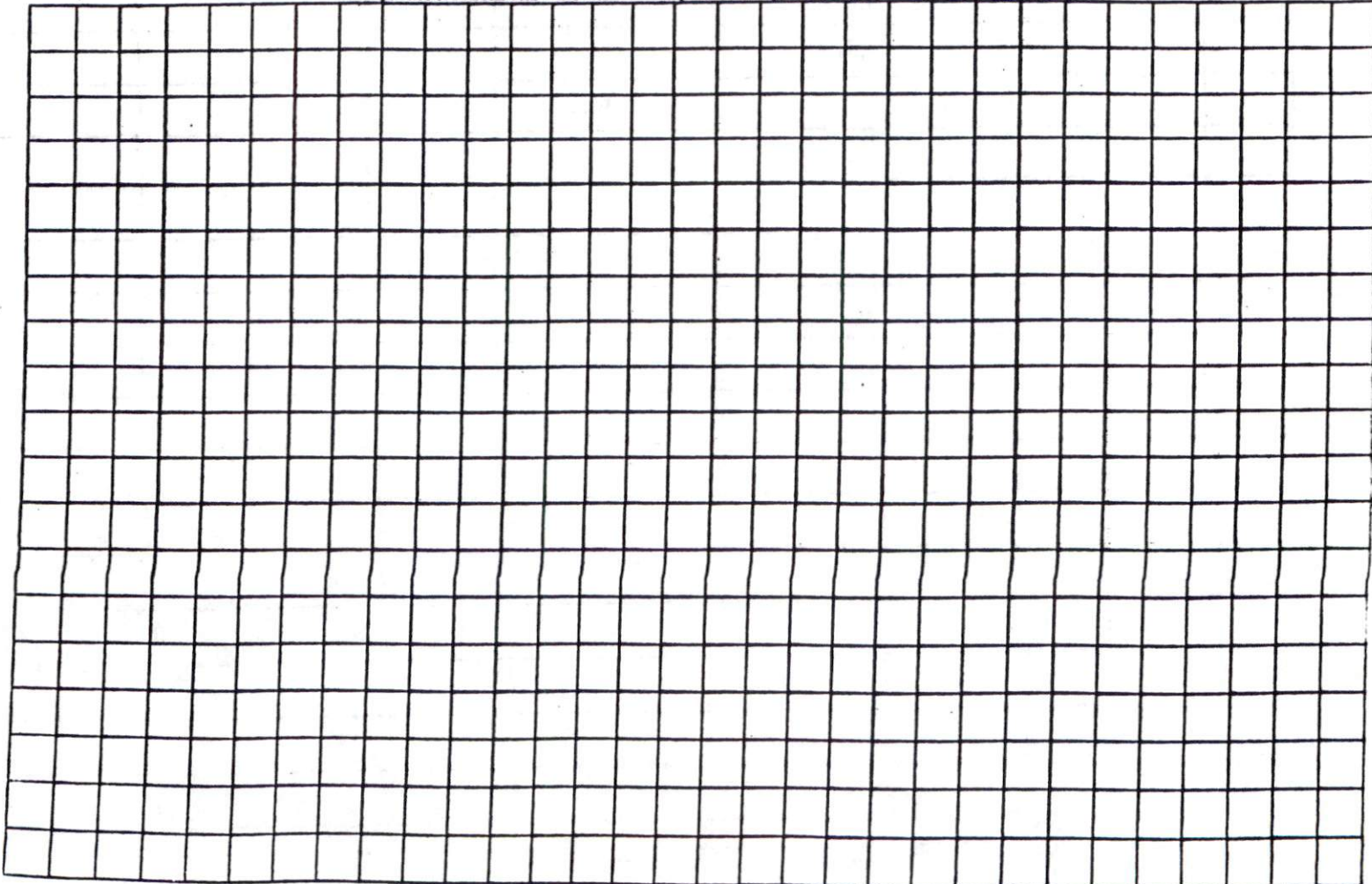
STRUCTURE

- SG-SINGLE GRAIN
- M-MASSIVE
- CR-CRUMB
- GR-GRANULAR
- SBK-SUBANGULAR BLOCKY
- ABK-ANGULAR BLOCKY
- PL-PLATY
- PR-PRISMATIC

MINERALOGY

- SLIGHTLY EXPANSIVE
- EXPANSIVE

Show profile locations and other site features (dimensions, references or benchmark, and North)





S00°04'36"W

140.02

82.02

101

102

100

N90°00'00"E
178.17

N90°00'00"E
169.65

75.00

00.09

60.00

32.51

75.00

32.51

36.00

36.00

36.00

S00°00'00"E

121.39

GOLD COURT
50' PUBLIC R/W



Charlie T. Carpenter L-4488
7/27/10

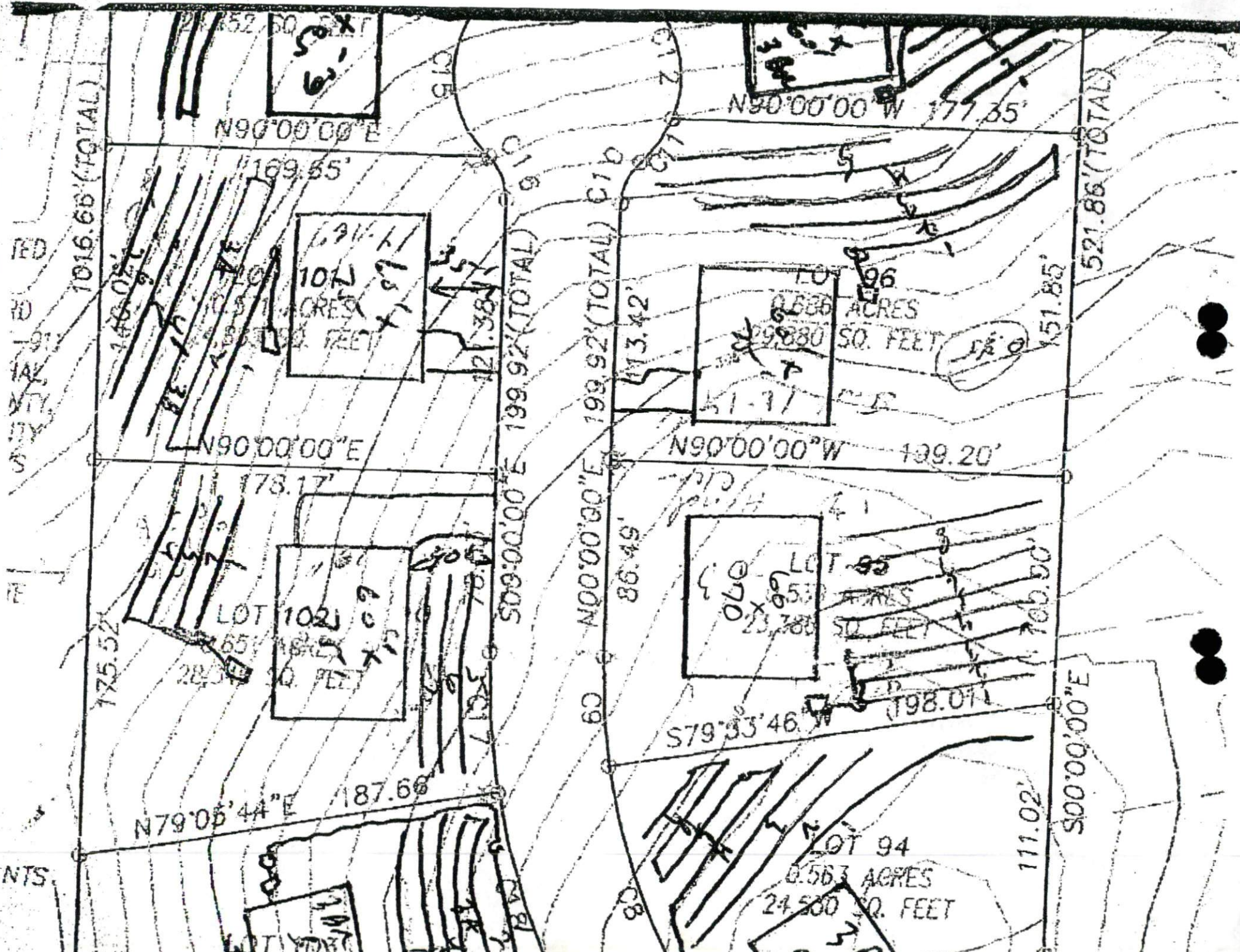
THIS MAP WAS PREPARED FROM RECORDED DATA, AS NOTED, AND FROM OTHER SOURCES PROVIDED BY THE OWNER. THIS IS A PRELIMINARY SITE PLAN, INTENDED FOR PLANNING USE ONLY AND IN NO WAY REPRESENTS A SURVEY MADE BY THIS COMPANY. THIS MAP IS NOT INTENDED FOR RECORDATION, CONVEYANCES, OR SALES.

Charlie T. Carpenter, P.L.S.
Professional Land Surveyor
1940 Juniper Church Road
Four Oaks, NC 27524
(919) 963-2909
(919) 320-5281

PRELIMINARY SITE PLAN FOR:
WYNN CONSTRUCTION

PIN 9597-24-8636.000
PARCEL ID 03957601 0088 05
LOT 101 TINGEN POINTE S/D
PB20010 PG43-44
7/23/10
1"=40'

GOLD COURT
BROADWAY, NC 27505



1016.66'(TOTAL)

N90°00'00"E

169.55'

LOT 101
0.631 ACRES
137,111 SQ. FEET

N90°00'00"E

178.17'

LOT 102
0.651 ACRES
142,500 SQ. FEET

N79°05'44"E

187.68'

S09°00'00"E 199.92'(TOTAL)

N00°00'00"E 199.92'(TOTAL)

86.49'

S79°33'46"W

198.07'

LOT 95
0.557 ACRES
127,388 SQ. FEET

N90°00'00"W

139.20'

LOT 96
0.626 ACRES
143,880 SQ. FEET

S00°00'00"E

111.02'

51.85'

521.86'(TOTAL)

N90°00'00"W 177.35'

FED
RD
191
VAL
MAY
1953

NTS