

COMMENTS: _____

<u>LANDSCAPE POSITIONS</u>	<u>GROUP</u>	<u>TEXTURES</u>	<u>.1955 LTAR</u>	<u>CONSISTENCE MOIST</u>	<u>WBT</u>
R-RIDGE	I	S-SAND	1.2 - 0.8	VFR-VERY FRIABLE	NS-NON-STICKY
S-SHOULDER SLOPE		LS-LOAMY SAND		FR-FRIABLE	SS-SLIGHTLY STICKY
L-LINEAR SLOPE	II	SL-SANDY LOAM	0.8 - 0.6	FI-FIRM	S-STICKY
FS-FOOT SLOPE		L-LOAM		VFI-VERY FIRM	VS-VERY STICKY
N-NOSE SLOPE	III	SI-SILT	0.6 - 0.3	EFI-EXTREMELY FIRM	NP-NON-PLASTIC
H-HEAD SLOPE		SIL-SILT LOAM			SP-SLIGHTLY STICKY
CC-CONCLAVE SLOPE		CL-CLAY LOAM			P-PLASTIC
CV-CONVEX SLOPE		SCL-SANDY CLAY LOAM			VP-VERY PLASTIC
T-TERRACE	IV	SIC-SILTY CLAY	0.4 - 0.1		
FP-FLOOD PLAN		C-CLAY			
		SC-SANDY CLAY			

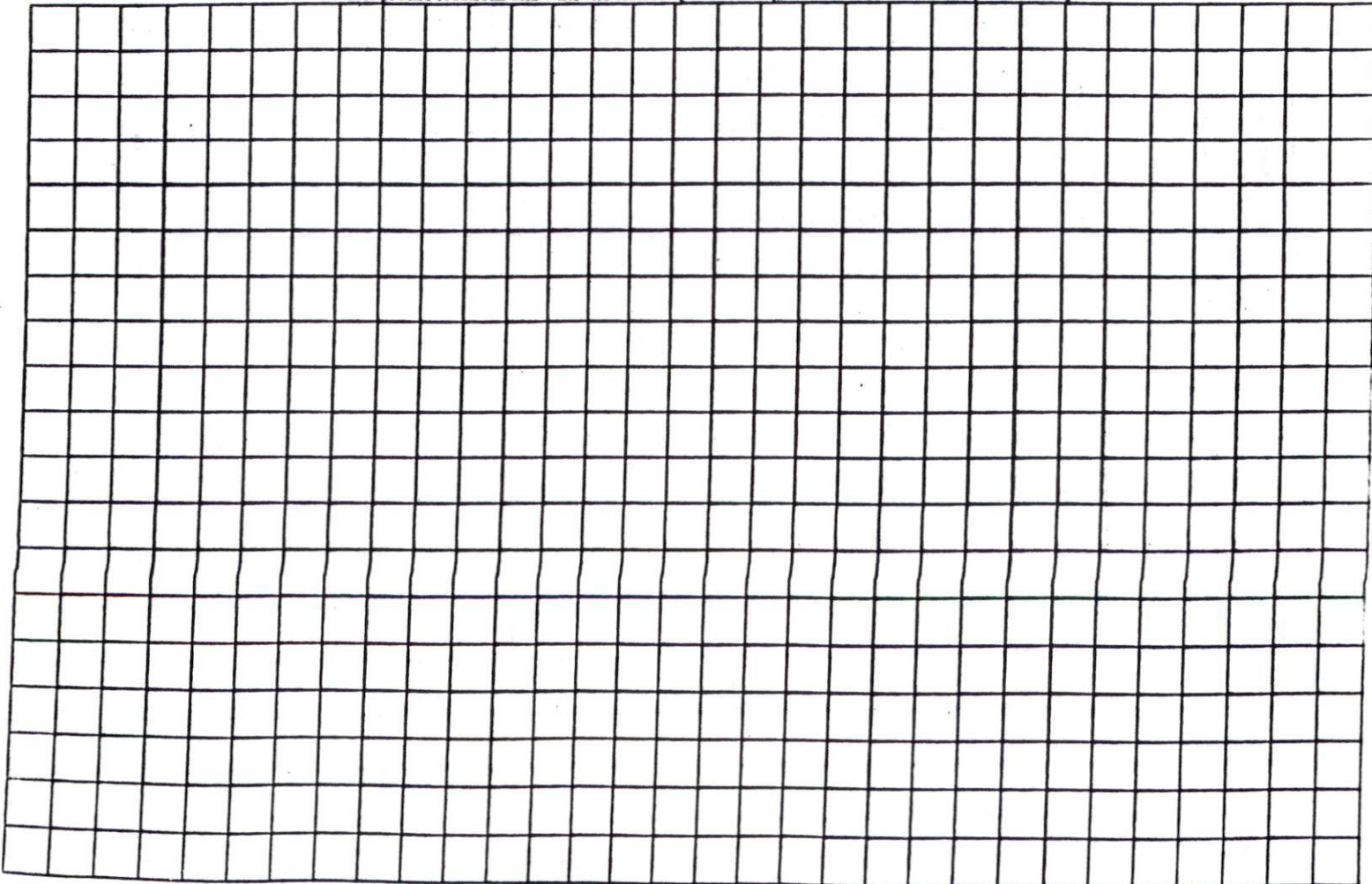
STRUCTURE

- SG-SINGLE GRAIN
- M-MASSIVE
- CR-CRUMB
- GR-GRANULAR
- SBK-SUBANGULAR BLOCKY
- ABK-ANGULAR BLOCKY
- PL-PLATY
- PR-PRISMATIC

MINERALOGY

- SLIGHTLY EXPANSIVE
- EXPANSIVE

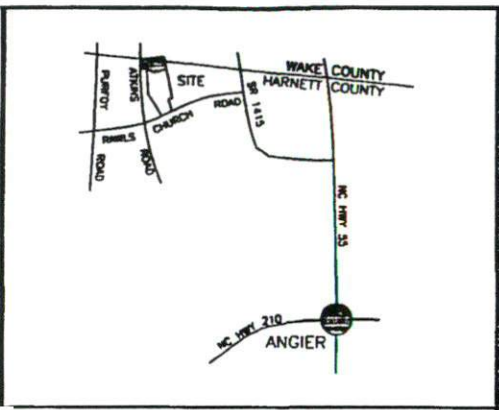
Show profile locations and other site features (dimensions, references or benchmark, and North)



Curve	Radius	Length
C1	525.00'	30.61'

PLOT PLAN FOR COMFORT HOMES BLACK RIVER TOWNSHIP HARNETT COUNTY NORTH CAROLINA

DEED NORTH 1841 PG 532

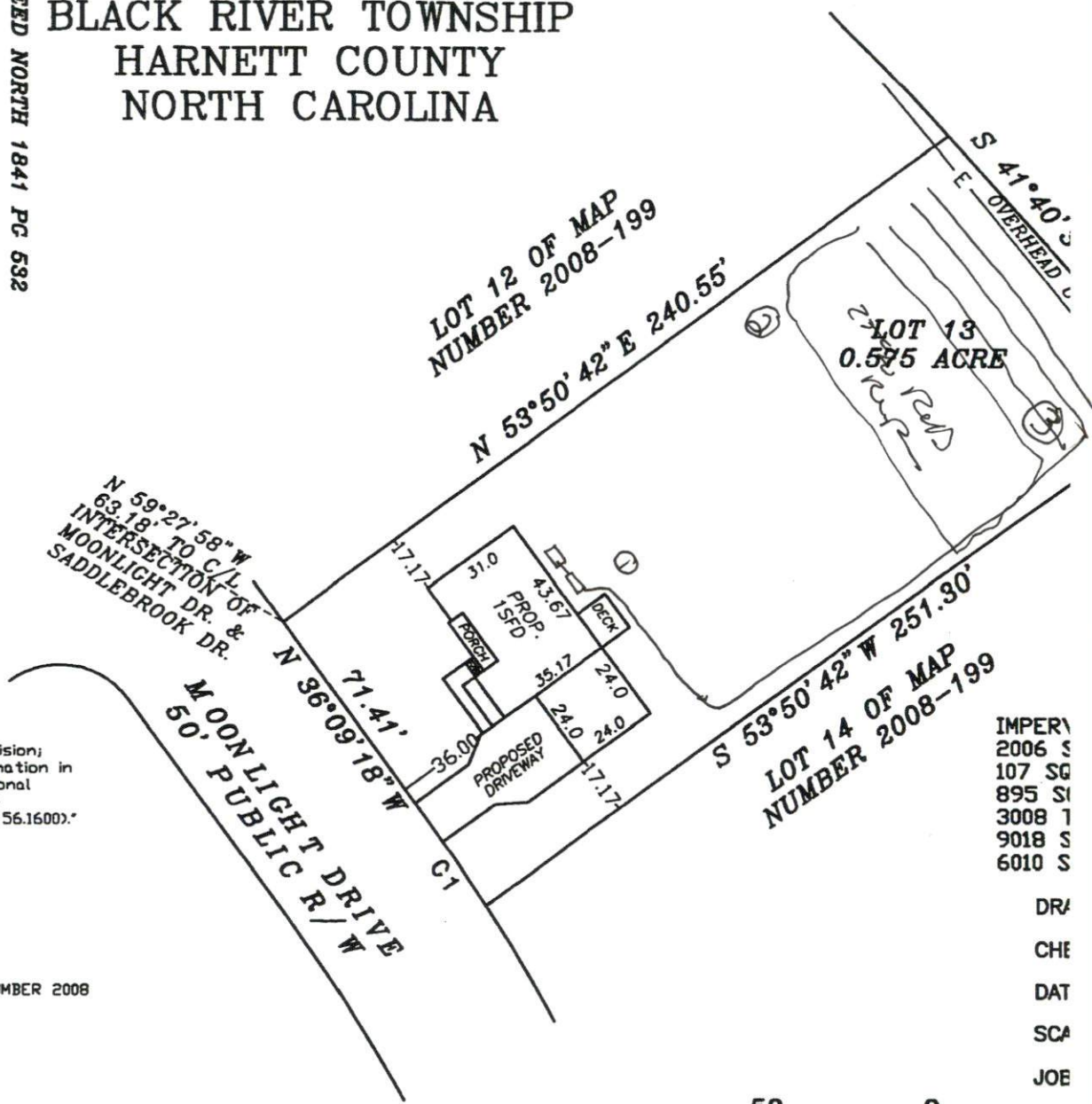


VICINITY MAP



- NOTE: BEING LOT 13 OF STETSON SUBDIVISION, RECORDED IN MAP NUMBER 2008 PGS. 193-196 AND RE-RECORDED IN MAP NUMBER 2008 PGS. 199-200.
- NOTE: AREA COMPUTED BY COORDINATE METHOD.
- NOTE: NO NCGS CONTROL MONUMENT WITHIN 2000'.
- NOTE: LOTS TO BE SERVED BY HARNETT COUNTY WATER AND INDIVIDUAL SEPTIC SYSTEMS.

NOTE: THIS PROPERTY IS SUBJECT TO EASEMENTS AND RESTRICTIONS OF RECORD.
PRELIMINARY PLAT- NOT FOR RECORDATION, CONVEYANCES, OR SALES.



"I, Danny D. Williams, certify that this map was drawn under my supervision; that the boundaries not surveyed are indicated as drawn from information in Map Number 2008, Pages 193-196; that the ratio of precision or positional accuracy is 1:10,000; and that this map meets the requirements of The Standards of Practice for Land Surveying, North Carolina (21 NCAC 56.1600)."

This 22nd day of JUNE, 2010.

Seal

SEAL
 L-2647
 DANNY D. WILLIAMS
 Professional Land Surveyor
 2647

NOTE: NOT AN ACTUAL FIELD SURVEY. INFORMATION TAKEN FROM MAP NUMBER 2008 PGS 193-196.

WILLIAMS - PEARCE & ASSOC., P.A.
 P. O. BOX 892
 ZEBULON, N. C.
 PHONE: 269-9605



IMPERY
 2006 S
 107 SQ
 895 SI
 3008 T
 9018 S
 6010 S
 DRA
 CHE
 DAT
 SCA
 JOE

