

COMMENTS: _____

<u>LANDSCAPE POSITIONS</u>	<u>GROUP</u>	<u>TEXTURES</u>	<u>.1955 LTAR</u>	<u>CONSISTENCE MOIST</u>	<u>WET</u>
R-RIDGE	I	S-SAND	1.2 - 0.8	VFR-VERY FRIABLE	NS-NON-STICKY
S-SHOULDER SLOPE		LS-LOAMY SAND		FR-FRIABLE	SS-SLIGHTLY STICKY
L-LINEAR SLOPE	II	SL-SANDY LOAM	0.8 - 0.6	FI-FIRM	S-STICKY
FS-FOOT SLOPE		L-LOAM		VFI-VERY FIRM	VS-VERY STICKY
N-NOSE SLOPE	III	SI-SILT	0.6 - 0.3	EFI-EXTREMELY FIRM	NP-NON-PLASTIC
H-HEAD SLOPE		SIL-SILT LOAM			SP-SLIGHTLY STICKY
CC-CONCLAVE SLOPE		CL-CLAY LOAM			P-PLASTIC
CV-CONVEX SLOPE		SCL-SANDY CLAY LOAM			VP-VERY PLASTIC
T-TERRACE	IV	SIC-SILTY CLAY	0.4 - 0.1		
FP-FLOOD PLAN		C-CLAY			
		SC-SANDY CLAY			

STRUCTURE

- SG-SINGLE GRAIN
- M-MASSIVE
- CR-CRUMB
- GR-GRANULAR
- SBK-SUBANGULAR BLOCKY
- ABK-ANGULAR BLOCKY
- PL-PLATY
- PR-PRISMATIC

MINERALOGY

- SLIGHTLY EXPANSIVE
- EXPANSIVE

Show profile locations and other site features (dimensions, references or benchmark, and North)

A large grid for drawing site features and profile locations. The grid is approximately 20 units wide and 30 units high, with a small margin at the top for a title or notes.



S47°41'21"E
102.19

APPROXIMATE WETLANDS LOCATION

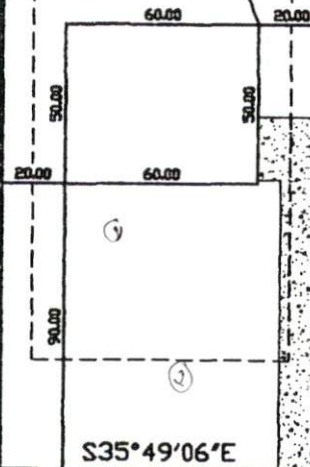
106

NS4°10'54"E
354.01

NS4°10'54"E
375.03

105

107



S35°49'06"E
100.00

GOLD COURT
50' PUBLIC R/W



Charlie T. Carpenter L-4488
6/30/10

THIS MAP WAS PREPARED FROM RECORDED DATA, AS NOTED, AND FROM OTHER SOURCES PROVIDED BY THE OWNER. THIS IS A PRELIMINARY SITE PLAN, INTENDED FOR PLANNING USE ONLY AND IN NO WAY REPRESENTS A SURVEY MADE BY THIS COMPANY. THIS MAP IS NOT INTENDED FOR RECORDATION, CONVEYANCES, OR SALES.

Charlie T. Carpenter, P.L.S.
Professional Land Surveyor

1940 Juniper Church Road
Four Oaks, NC 27524
(919) 963-2909
(919) 320-5281

PRELIMINARY SITE PLAN FOR:
WYNN CONSTRUCTION

PIN 9597-24-9074.000
PARCEL ID 03957601 0088 10
LOT 106 TINGEN POINTE S/D
PB20010 PG43-44
6/29/10
1"=60'

149 GOLD COURT
BROADWAY, NC 27505

SOUTHEASTERN SOIL & ENVIRONMENTAL ASSOC, INC.

PROPOSED SUBSURFACE WASTE DISPOSAL SYSTEM DETAIL SHEET

SUBDIVISION Tingus Pt 2

LOT 106

INITIAL SYSTEM pump to approved 25% reduction

REPAIR pump to approved 25% reduction

DISTRIBUTION D-box

DISTRIBUTION D-box

BENCHMARK 100.0

LOCATION Front corner 106/107

NO. BEDROOMS 3

proposed CTAR = 0.4 gal/ft²

LINE FLAG COLOR ELEVATION ACTUAL LENGTH

LINE	FLAG COLOR	ELEVATION	ACTUAL LENGTH
1	B	100.00	60'
2	W	99.58	60'
3	B	97.25	60'
4	W	98.67	60'
			<u>240'</u>
5	B	97.75	75'
6	W	97.00	75'
7	B	96.25	75'
			<u>225'</u>

Initial

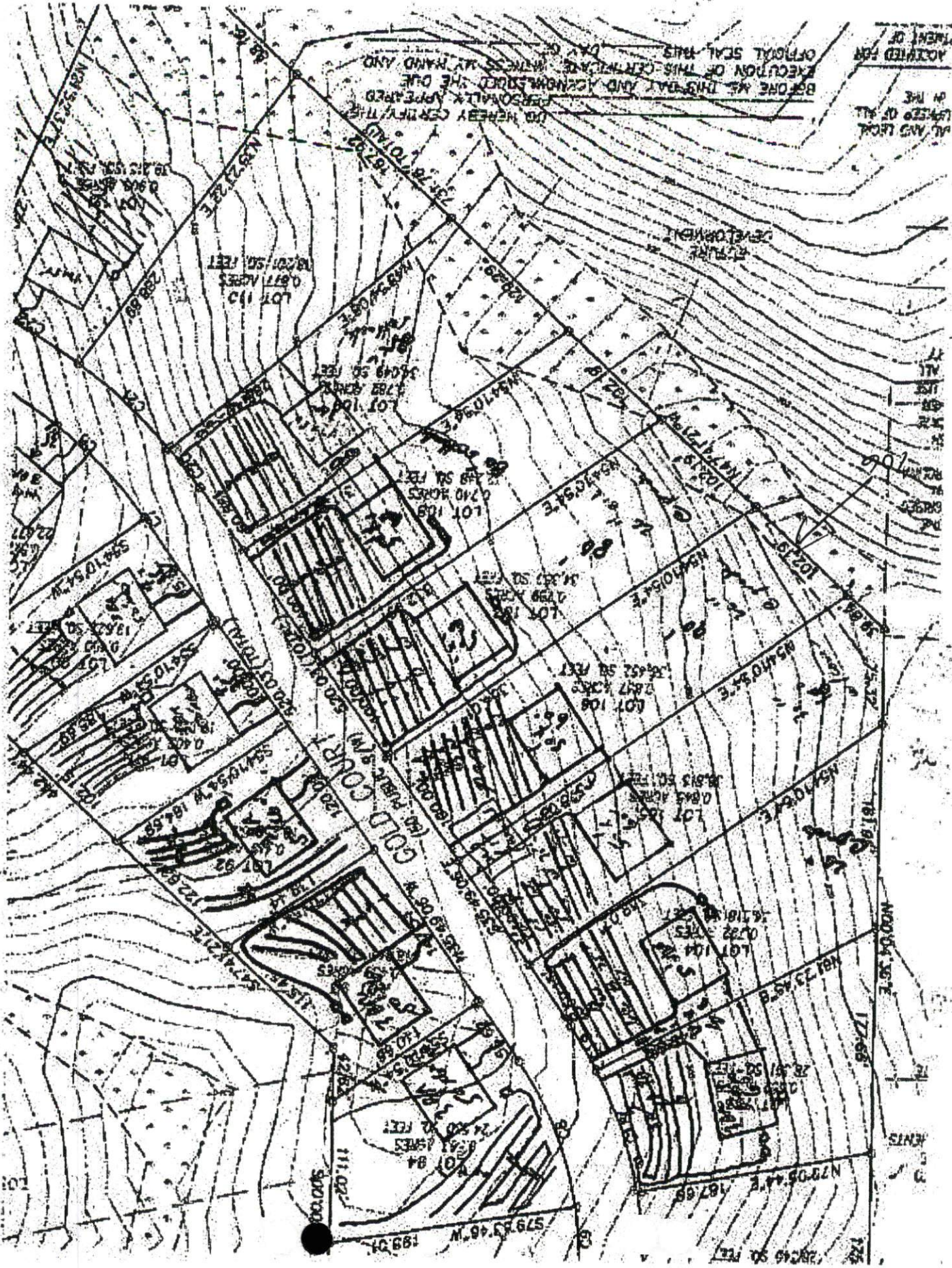
BY M. S. AKSA

DATE 06/2010

(*) DO NOT REMOVE COIL WHEN CLEARING. HAND CLEAR IF NECESSARY

INSTALL AT
12" ADD
6" COVER

Typ Profile
0-14 GS (WT, UN-1)
14-36" SCL (R-10R)
or 20 26"



ALL AND EACH
 PARTS OF ALL
 IN THE
 ACCEPTED FOR

BEFORE ME THIS DAY AND ACKNOWLEDGED THE ONE
 EXECUTION OF THIS CERTIFICATE. WITNESS MY HAND AND
 OFFICIAL SEAL THIS DAY OF
 DAY OF
 1937

11
 10
 9
 8
 7
 6
 5
 4
 3
 2
 1

GOLD CORP.
 (INCORPORATED IN MICHIGAN)
 12000 W. FARM ROAD
 TROY, MICHIGAN