

COMMENTS: _____

<u>LANDSCAPE POSITIONS</u>	<u>GROUP</u>	<u>TEXTURES</u>	<u>.1955 LTAR</u>	<u>CONSISTENCE MOIST</u>	<u>WBT</u>
R-RIDGE	I	S-SAND	1.2 - 0.8	VFR-VERY FRIABLE	NS-NON-STICKY
S-SHOULDER SLOPE		LS-LOAMY SAND		FR-FRIABLE	SS-SLIGHTLY STICKY
L-LINEAR SLOPE	II	SL-SANDY LOAM	0.8 - 0.6	FI-FIRM	S-STICKY
FS-FOOT SLOPE		L-LOAM		VFI-VERY FIRM	VS-VERY STICKY
N-NOSE SLOPE				EFI-EXTREMELY FIRM	NP-NON-PLASTIC
H-HEAD SLOPE	III	SI-SILT	0.6 - 0.3		SP-SLIGHTLY STICKY
CC-CONCLAVE SLOPE		SIL-SILT LOAM			P-PLASTIC
CV-CONVEX SLOPE		CL-CLAY LOAM			VP-VERY PLASTIC
T-TERRACE		SCL-SANDY CLAY LOAM			
FP-FLOOD PLAN	IV	SIC-SILTY CLAY	0.4 - 0.1		
		C-CLAY			
		SC-SANDY CLAY			

STRUCTURE

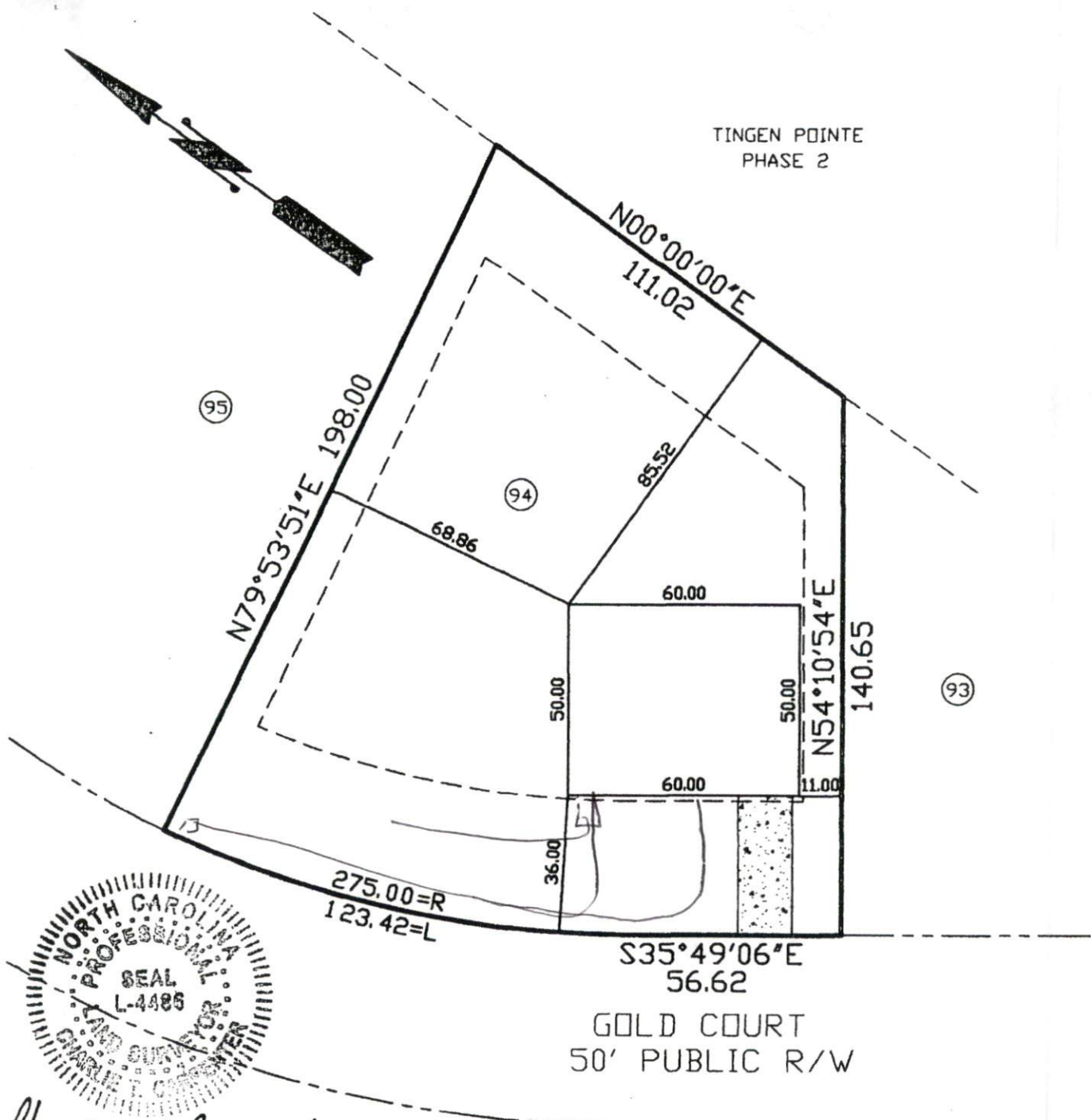
- SG-SINGLE GRAIN
- M-MASSIVE
- CR-CRUMB
- GR-GRANULAR
- SBK-SUBANGULAR BLOCKY
- ABK-ANGULAR BLOCKY
- PL-PLATY
- PR-PRISMATIC

MINERALOGY

- SLIGHTLY EXPANSIVE
- EXPANSIVE

Show profile locations and other site features (dimensions, references or benchmark, and North)

TINGEN POINTE
PHASE 2



Charlie T. Carpenter L-4485
6/30/10

THIS MAP WAS PREPARED FROM RECORDED DATA, AS NOTED, AND FROM OTHER SOURCES PROVIDED BY THE OWNER. THIS IS A PRELIMINARY SITE PLAN, INTENDED FOR PLANNING USE ONLY AND IN NO WAY REPRESENTS A SURVEY MADE BY THIS COMPANY. THIS MAP IS NOT INTENDED FOR RECORDATION, CONVEYANCES, OR SALES.

Charlie T. Carpenter, P.L.S.
Professional Land Surveyor

1940 Juniper Church Road
Four Oaks, NC 27524
(919) 963-2909
(919) 320-5281

PRELIMINARY SITE PLAN FOR:
WYNN CONSTRUCTION

PIN 9597-34-0480.000
PARCEL ID 039576 0088 98
LOT 94 TINGEN POINTE S/D
PB20010 PG43-44
6/29/10
1"=40'

**196 GOLD COURT
BROADWAY, NC 27505**

PROPOSED SUBSURFACE WASTE DISPOSAL SYSTEM DETAIL SHEET

SUBDIVISION	Tampa Pt 2
INITIAL SYSTEM	Approved 1/29/10
DISTRIBUTION	same
BENCHMARK	100.0
NO. BEDROOMS	3
LINE	FLAG COLOR
	ELEVATION
	ACTUAL LENGTH
	REPAIR Approved 1/29/10
	DISTRIBUTION same
	LOCATION Footcove 04/95
	Proposed CTAR = 0.4 gal/hr
	" " = 0.3 gal/hr
	(repor-)

1	-	-	12'	12'	12'
2	-	-	11'	11'	11'
3	-	-	11'	11'	11'
4	-	-	100'	100'	100'
5	-	-	100'	100'	100'
6	-	-	100'	100'	100'
7	-	-	100'	100'	100'
8	-	-	100'	100'	100'
9	-	-	100'	100'	100'
10	-	-	100'	100'	100'
11	-	-	100'	100'	100'
12	-	-	100'	100'	100'

4	W	102.25	90	90
5	P	101.84	60	60
6	W	101.72	50	50
7	W	101.00	35'	35'

BY M3/2010

DATE 06/2010

* DO NOT REMOVE COIL WHEN CLEARING. HAND CLEAR IF NECESSARY

0-16 US (US. unit)
16-30 US (US. unit)
C12 732
C12 225 (repor-)

In the
note

Assumed
"with repair"

