

COMMENTS: _____

<u>LANDSCAPE POSITIONS</u>	<u>GROUP</u>	<u>TEXTURES</u>	<u>1955 LTAR</u>	<u>CONSISTENCE MOIST</u>	<u>WBT</u>
R-RIDGE	I	S-SAND	1.2-0.8	VFR-VERY FRIABLE	NS-NON-STICKY
S-SHOULDER SLOPE		LS-LOAMY SAND		FR-FRIABLE	SS-SLIGHTLY STICKY
L-LINEAR SLOPE	II	SL-SANDY LOAM	0.8-0.6	FI-FIRM	S-STICKY
FS-FOOT SLOPE		L-LOAM		VFI-VERY FIRM	VS-VERY STICKY
N-NOSE SLOPE				EFI-EXTREMELY FIRM	NP-NON-PLASTIC
H-HEAD SLOPE	III	SI-SILT	0.6-0.3		SP-SLIGHTLY STICKY
CC-CONCLAVE SLOPE		SIL-SILT LOAM			P-PLASTIC
CV-CONVEX SLOPE		CL-CLAY LOAM			VP-VERY PLASTIC
T-TERRACE		SCL-SANDY CLAY LOAM			
FP-FLOOD PLAN	IV	SIC-SILTY CLAY	0.4-0.1		
		C-CLAY			
		SC-SANDY CLAY			

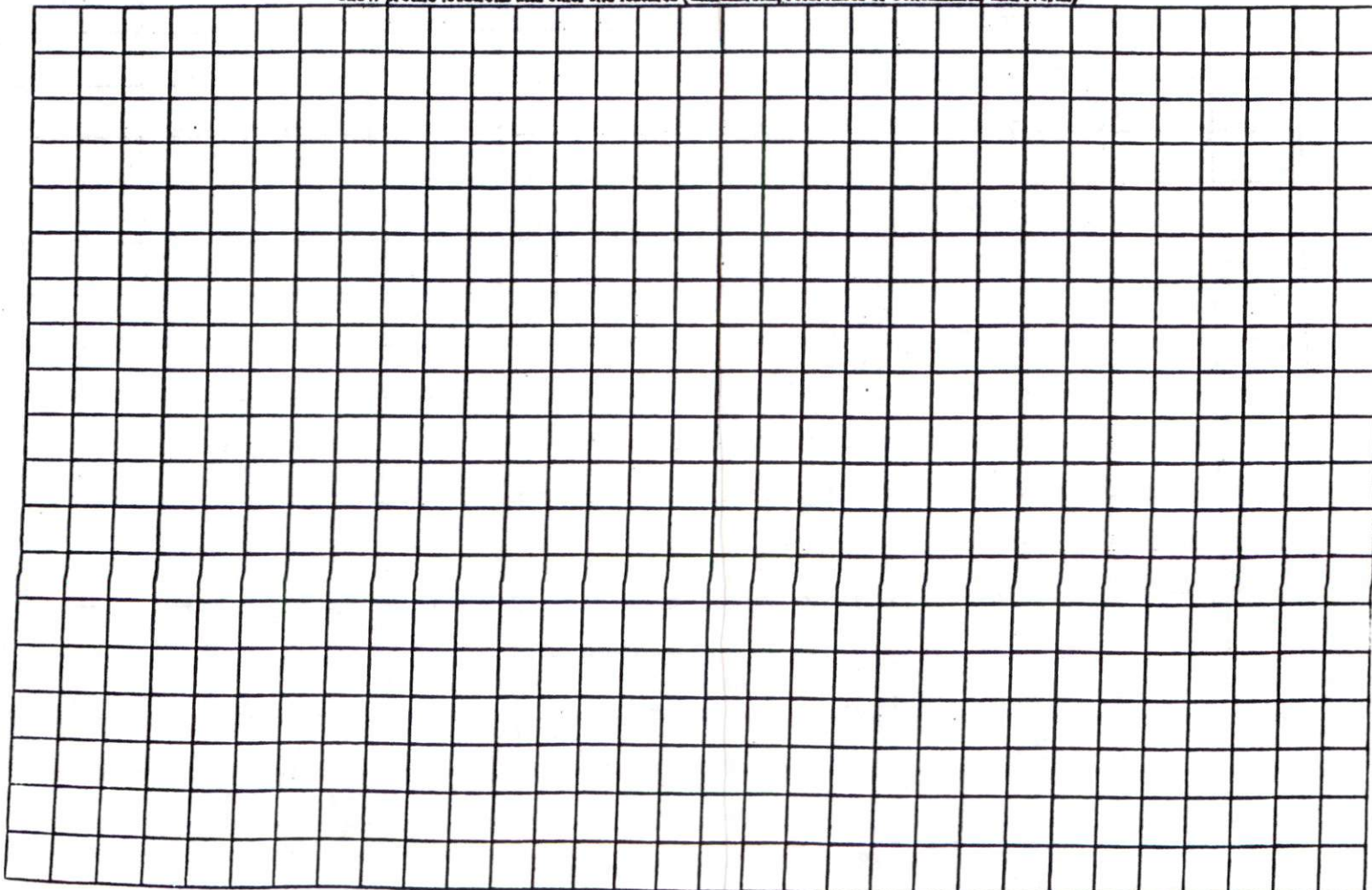
STRUCTURE

- SG-SINGLE GRAIN
- M-MASSIVE
- CR-CRUMB
- GR-GRANULAR
- SEK-SUBANGULAR BLOCKY
- ABK-ANGULAR BLOCKY
- PL-PLATY
- PR-PRISMATIC

MINERALOGY

- SLIGHTLY EXPANSIVE
- EXPANSIVE

Show profile locations and other site features (dimensions, references or benchmark, and North)



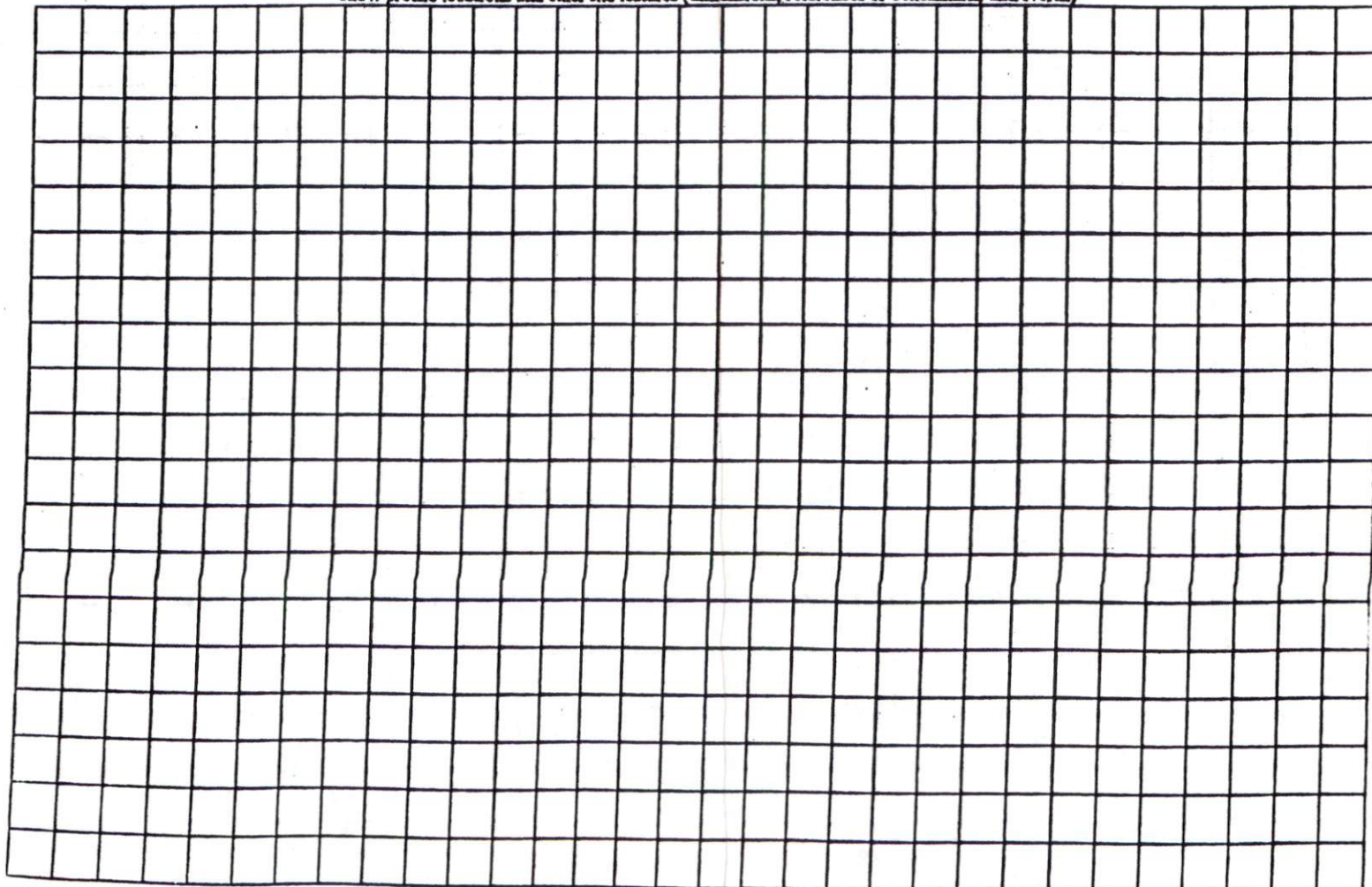
COMMENTS: _____

<u>LANDSCAPE POSITIONS</u>	<u>GROUP</u>	<u>TEXTURES</u>	<u>1955 LTAR</u>	<u>CONSISTENCE MOIST</u>	<u>WBT</u>
R-RIDGE	I	S-SAND	1.2-0.8	VFR-VERY FRIABLE	NS-NON-STICKY
S-SHOULDER SLOPE		LS-LOAMY SAND		FR-FRIABLE	SS-SLIGHTLY STICKY
L-LINEAR SLOPE	II	SL-SANDY LOAM	0.8-0.6	FI-FIRM	S-STICKY
FS-FOOT SLOPE		L-LOAM		VFI-VERY FIRM	VS-VERY STICKY
N-NOSE SLOPE				EFI-EXTREMELY FIRM	NP-NON-PLASTIC
H-HEAD SLOPE	III	SI-SILT	0.6-0.3		SP-SLIGHTLY STICKY
CC-CONCLAVE SLOPE		SIL-SILT LOAM			P-PLASTIC
CV-CONVEX SLOPE		CL-CLAY LOAM			VP-VERY PLASTIC
T-TERRACE		SCL-SANDY CLAY LOAM			
FP-FLOOD PLAN	IV	SIC-SILTY CLAY	0.4-0.1		
		C-CLAY			
		SC-SANDY CLAY			

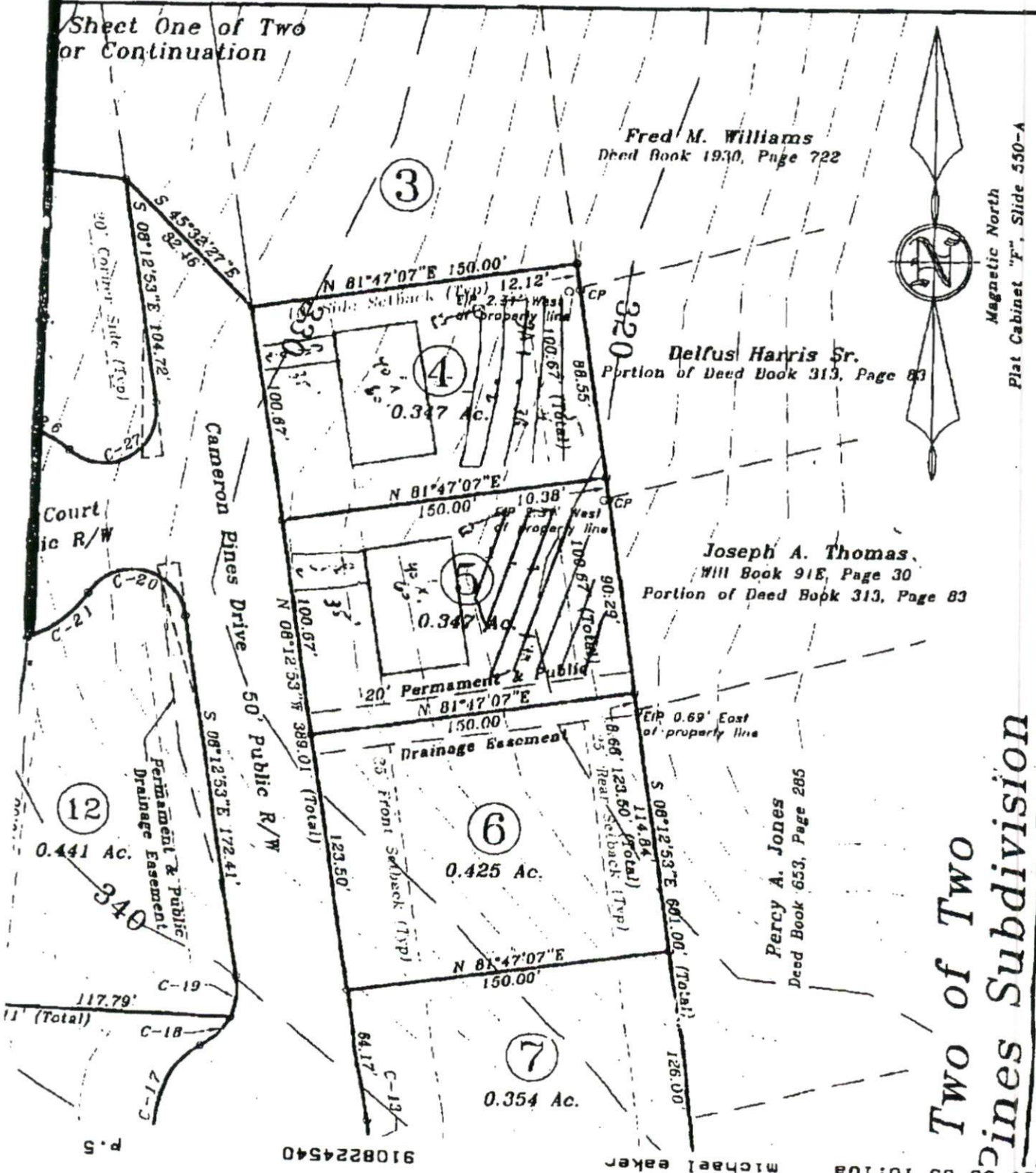
STRUCTURE
 SG-SINGLE GRAIN
 M-MASSIVE
 CR-CRUMB
 GR-GRANULAR
 SBK-SUBANGULAR BLOCKY
 ABK-ANGULAR BLOCKY
 PL-PLATY
 PR-PRISMATIC

MINERALOGY
 SLIGHTLY EXPANSIVE
 EXPANSIVE

Show profile locations and other site features (dimensions, references or benchmark, and North)



Sheet One of Two
or Continuation



Fred M. Williams
Deed Book 1930, Page 722

Delfus Harris Sr.
Portion of Deed Book 313, Page 83

Joseph A. Thomas,
Will Book 91E, Page 30
Portion of Deed Book 313, Page 83

Percy A. Jones
Deed Book 653, Page 285



**Two of Two
Pines Subdivision**

STANCIL & ASSOCIATES,
Professional Land Surveyor, P.A.

FOR AND OWNED BY:
Custom Homes I.I.C.

SOUTHEASTEN SOIL & ENVIRONMENTAL ASSOC, INC.

PROPOSED SUBSURFACE WASTE DISPOSAL SYSTEM DETAIL SHEET

SUBDIVISION Caracas Pines

LOT 5

INITIAL SYSTEM Approved 25' reduction

REPAIR Approved 25' reduction

DISTRIBUTION 50' x 50'

DISTRIBUTION 50' x 50'

BENCHMARK 100.00

LOCATION rear corner 4/10'

NO. BEDROOMS 4

proposed LTRAP = 0.6 gpd/ft²

<u>LINE</u>	<u>FLAG COLOR</u>	<u>ELEVATION</u>	<u>ACTUAL LENGTH</u>
1	B	102.58	4'
2	W	102.37	60'
3	R	101.75	80'
4+	W	101.17	20'
			<u>200'</u>
4A	W	101.87	60'
5	B	100.67	70'
6	W	100.50	50'
7	B	100.74	20'
			<u>210'</u>

In. line

BY MA EAKER

DATE 11/2009

Trench depth can vary from 18-24"

Typ. Profile

- 0-20 15' (15, 15')
- 20-30 15' (15, 15')
- 30-48 15' (15, 15')
- 0-27 48"