



COMMENTS: \_\_\_\_\_

GROUP TEXTURES 1955 LTAR CONSISTENCE MOIST WET

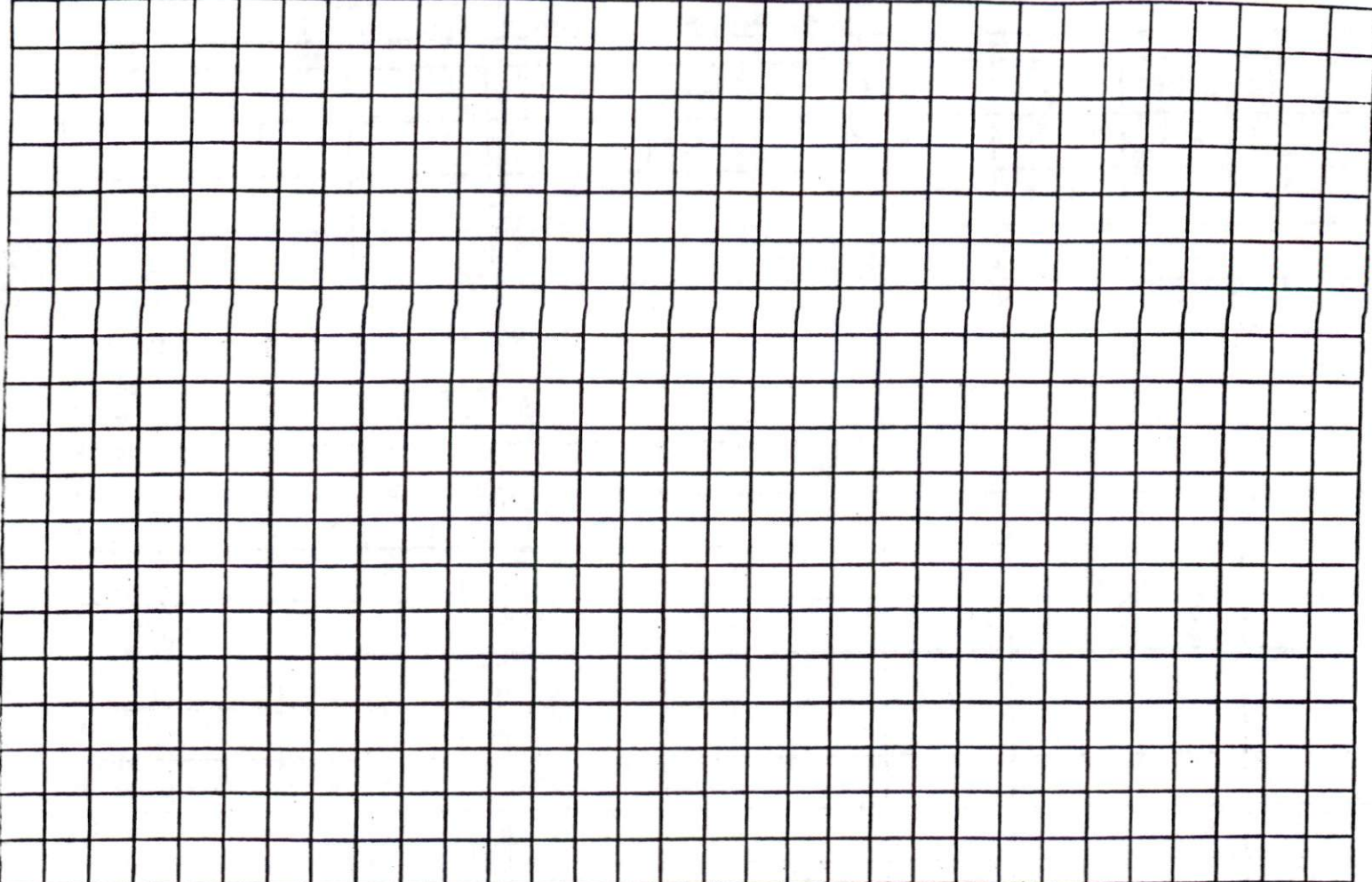
LANDSCAPE POSITIONS

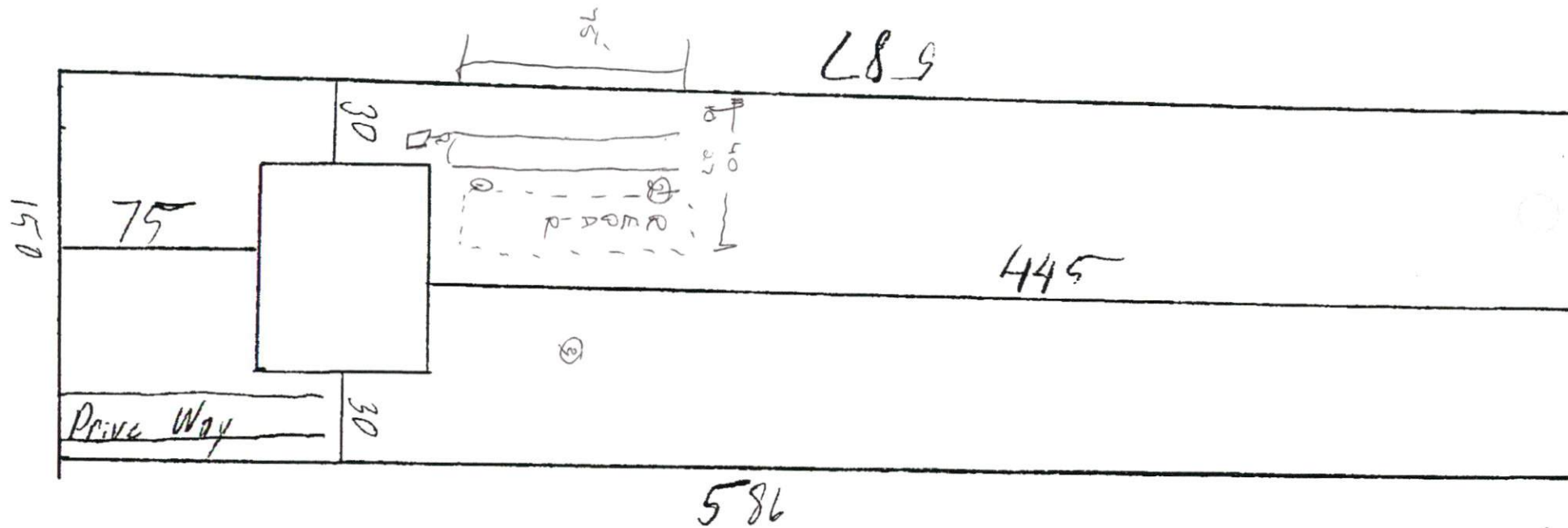
NS-NON-STCKY	VFR-VERY FRIBLE	1.2-0.8	S-SAND	I	R-RIDGE
SS-SLIGHTY STCKY	FR-FRIBLE	0.8-0.6	SL-SANDY LOAM	II	S-SHOULDER SLOPE
S-STCKY	FI-FIRM		L-LOAM		L-LINEAR SLOPE
V3-VERY STCKY	VFI-VERY FIRM		SI-SILT	III	F3-FOOT SLOPE
NP-NON-PLASTIC	EFI-EXTREMELY FIRM	0.6-0.3	SL-SILT LOAM		N-NOSE SLOPE
SP-SLIGHTY STCKY			CL-CLAY LOAM		H-HEAD SLOPE
P-PLASTIC			SCL-SANDY CLAY LOAM		CC-CONCLAVE SLOPE
VP-VERY PLASTIC			SC-SANDY CLAY	IV	CV-CONVEX SLOPE
		0.4-0.1	C-CLAY		T-TERRACE
			SIC-SILTY CLAY		FP-FLOOD PLAN

MINERALOGY  
SLIGHTLY EXPANSIVE  
EXPANSIVE

STRUGTURE  
SQ-SINGLE GRAIN  
M-MASSIVE  
CR-CRUMB  
OR-GRANULAR  
SBK-SUBANGULAR BLOCKY  
ABK-ANGULAR BLOCKY  
PL-PLATT  
PR-PRISMATIC

Show profile locations and other site features (dimensions, references or benchmark, and North)





011 W 100