

COMMENTS: _____

LANDSCAPE POSITIONS	GROUP	TEXTURES	1955 LTAR	CONSISTENCE MOIST	WET
R-RIDGE	I	S-SAND	1.2-0.8	VFR-VERY FRIABLE	NS-NON-STICKY
S-SHOULDER SLOPE		LS-LOAMY SAND		FR-FRIABLE	SS-SLIGHTLY STICKY
L-LINEAR SLOPE	II	SL-SANDY LOAM	0.8-0.6	FI-FIRM	S-STICKY
FS-FOOT SLOPE		L-LOAM		VFI-VERY FIRM	VS-VERY STICKY
N-NOSE SLOPE	III	SI-SILT	0.6-0.3	EFI-EXTREMELY FIRM	NP-NON-PLASTIC
H-HEAD SLOPE		SIL-SILT LOAM			SP-SLIGHTLY STICKY
CC-CONCLAVE SLOPE		CL-CLAY LOAM			P-PLASTIC
CV-CONVEX SLOPE	IV	SCL-SANDY CLAY LOAM	0.4-0.1		VP-VERY PLASTIC
T-TERRACE		SIC-SILTY CLAY			
FP-FLOOD PLAN		C-CLAY			
		SC-SANDY CLAY			

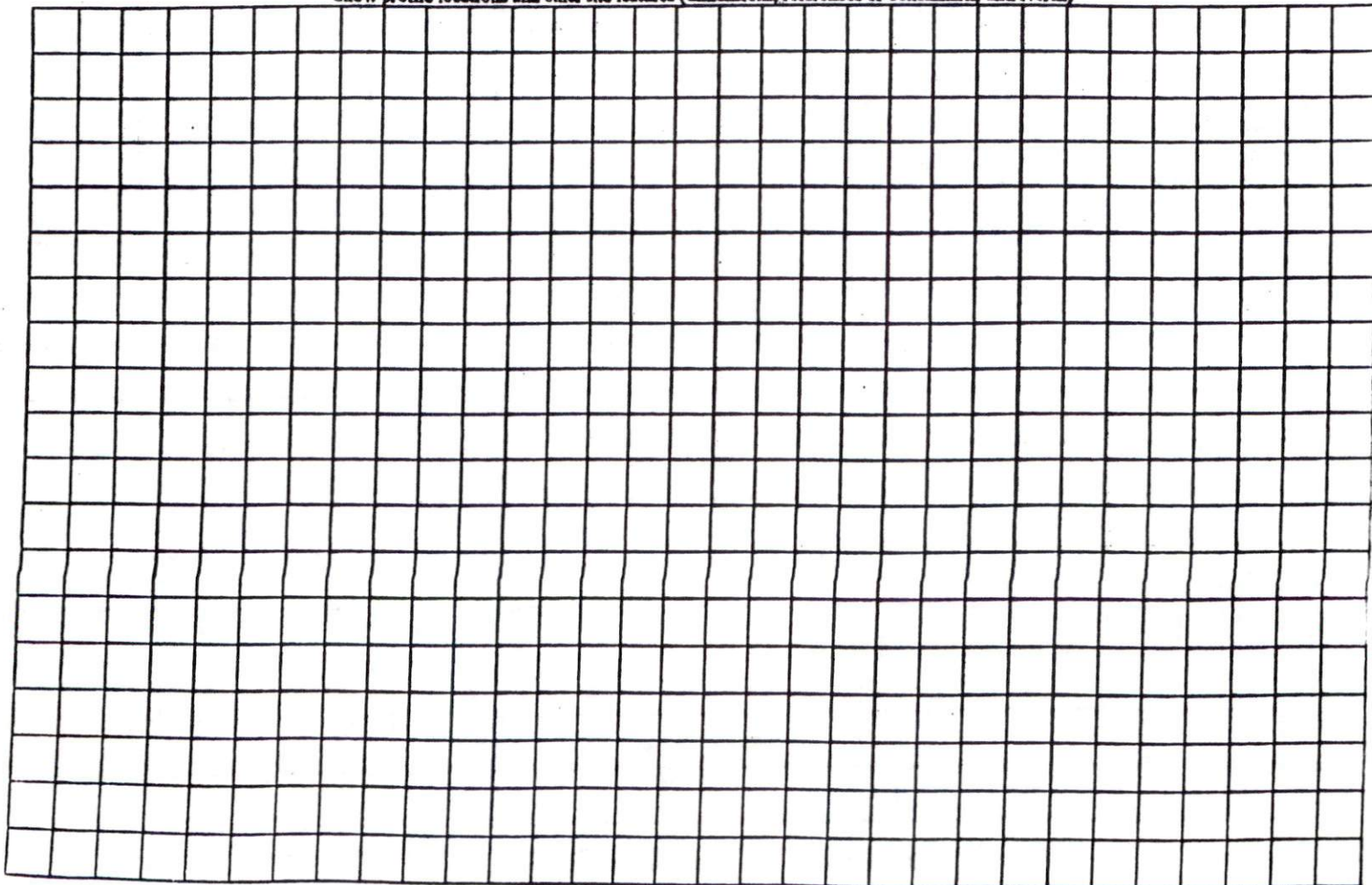
STRUCTURE

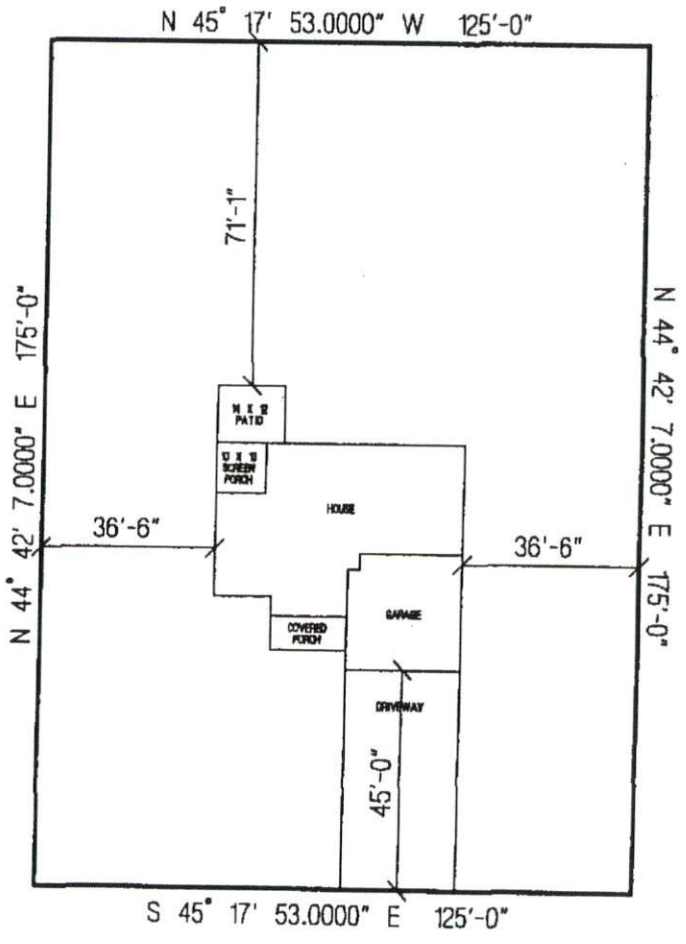
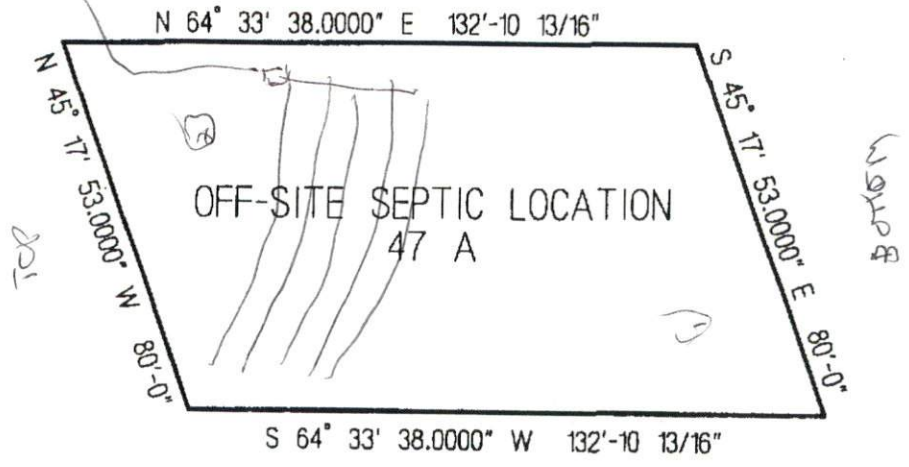
- SG-SINGLE GRAIN
- M-MASSIVE
- CR-CRUMB
- GR-GRANULAR
- SBK-SUBANGULAR BLOCKY
- ABK-ANGULAR BLOCKY
- PL-FLATY
- PR-PRISMATIC

MINERALOGY

- SLIGHTLY EXPANSIVE
- EXPANSIVE

Show profile locations and other site features (dimensions, references or benchmark, and North)





SITE PLAN APPROVAL
 DISTRICT B2020R USE SED
 #BEDROOMS 3
 Date 5-6-10 [Signature]
 Zoning Administrator

SUNRIDGE DRIVE
 LDS HOMES, LLC.
 THE PG13-A04BF
 LOT # 47 MIRE BRANCH
 SCALE: 1"=40'