

Thomas J. Boyce
P.O. Box 81
Pittsboro, NC 27312
NC Licensed Soil Scientist # 1241
NC Registered Sanitarian # 1353

Jimmy Autry
5845 HWY 210 South
Bunnlevel, NC 28323

Re: Proposed four bedroom house, corner of HWY 210 and Firelane Rd., Harnett Co.

Dear Mr. Autry,

A soils evaluation was completed on the above referenced property on December 23, 2009. The purpose of the evaluation was to determine the ability of the soils to support a subsurface waste disposal system and repair area. All ratings and determinations were made in accordance with "Laws and Rules for Sewage Treatment and Disposal Systems, 15A NCAC 18A.1900".

The above referenced tract was evaluated by auger borings and landscape position. Typical soils are twelve or more inches of sandy loam over a sandy clay loam to thirty-six inches. A loading rate of .35-.4 gpd/sqft can be assumed. The lot contains adequate area for an initial conventional system and an accepted repair for a four bedroom house (60' X 90'). The initial system would consist of 400' to 460' of drainline. Enclosed is a map of the property showing the area evaluated.

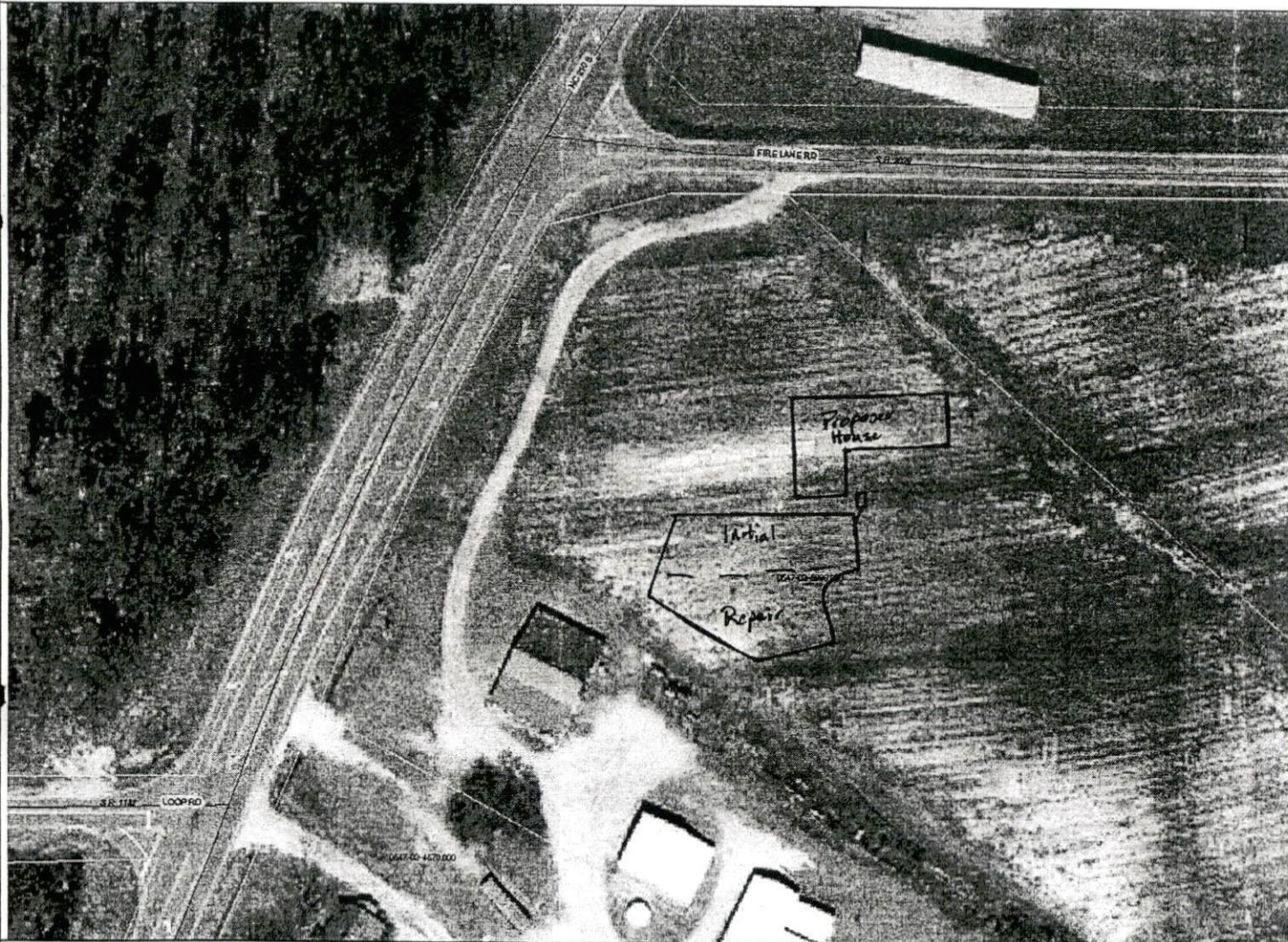
This report does not guarantee or represent approval or issuance as needed by the local health department. This report only represents my opinion as a licensed soil scientist. I trust this is the information that you require at this time. If you have any questions, please call.

Sincerely,

Thomas J. Boyce
Thomas J. Boyce



HARNETT COUNTY, NORTH CAROLINA GIS/LAND RECORDS



- ▲ AddressPoints
- ~ cfriv
- ~ roads
- ~ Centerline
- Parcels
- HarnettCountywideOrt-
ho2008v2.sid

Thomas J. Boyce

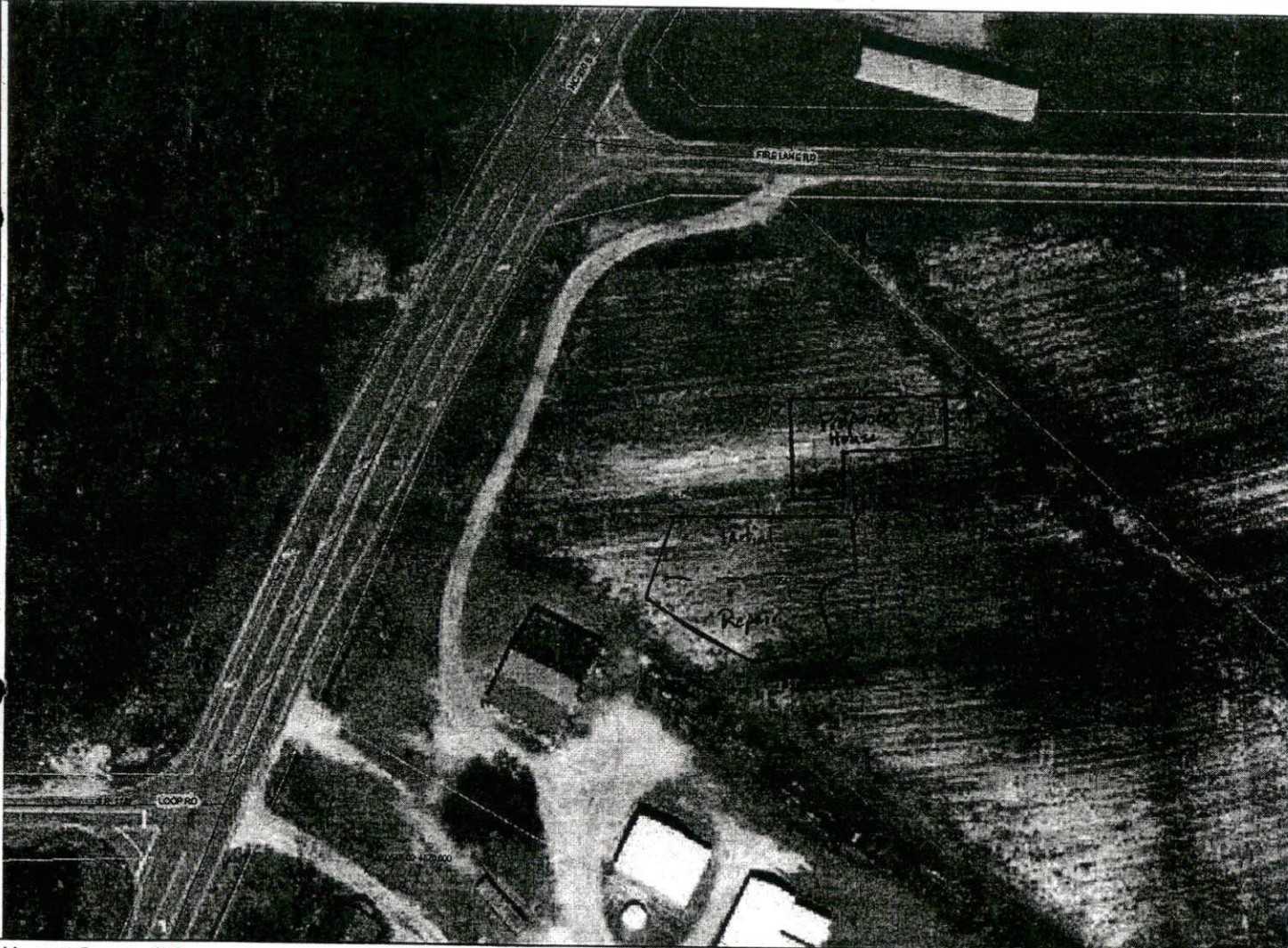
Harnett County GIS
 305 W Cornelius Harnett Blvd, Suite 100
 Lillington, NC 27546
 Phone: 910-893-7523 WWW.HARNETT.ORG

Any use of this map shall be at the sole risk of the user of this map. Although, all effort has been taken to insure accuracy in the data presented, Harnett County makes no warranty, expressed or implied, as to the accuracy of this information represented herein. Any user of this product shall hold harmless Harnett County, its elected officials, employees and agents from and against any claim, damage, loss, action, cause of action, or liability arising from the use of this GIS product.



HARNETT COUNTY, NORTH CAROLINA

GIS/LAND RECORDS



- ▲ AddressPoints
- ~ cfriv
- ~ roads
- ~ Centerline
- Parcels
- HarnettCountywideOrt-
ho2008v2.sld



Harnett County GIS
305 W Cornelius Harnett Blvd, Suite 100
Lillington, NC 27546
Phone: 910-893-7523 WWW.HARNETT.ORG

Any use of this map shall be at the sole risk of the user of this map. Although, all effort has been taken to insure accuracy in the data presented, Harnett County makes no warranty, expressed or implied, as to the accuracy of this information represented herein. Any user of this product shall hold harmless Harnett County, its elected officials, employees and agents from and against any claim, damage, loss, action, cause of action, or liability arising from the use of this GIS product.

