



COMMENTS: \_\_\_\_\_

<u>LANDSCAPE POSITIONS</u>	<u>GROUP</u>	<u>TEXTURES</u>	<u>.1955 LTAR</u>	<u>CONSISTENCE MOIST</u>	<u>WET</u>	
R-RIDGE	I	S-SAND	1.2 - 0.8	VFR-VERY FRIABLE	NS-NON-STICKY	
S-SHOULDER SLOPE		LS-LOAMY SAND				FR-FRIABLE
L-LINEAR SLOPE	II	SL-SANDY LOAM	0.8 - 0.6	FI-FIRM	S-STICKY	
FS-FOOT SLOPE		L-LOAM				VFI-VERY FIRM
N-NOSE SLOPE	III	SI-SILT-	0.6 - 0.3	EFI-EXTREMELY FIRM	NP-NON-PLASTIC	
H-HEAD SLOPE		SIL-SILT LOAM				SP-SLIGHTLY STICKY
CC-CONCLAVE SLOPE		CL-CLAY LOAM				P-PLASTIC
CV-CONVEX SLOPE		SCL-SANDY CLAY LOAM				VP-VERY PLASTIC
T-TERRACE	IV	SIC-SILTY CLAY	0.4 - 0.1			
FP-FLOOD PLAN		C-CLAY				
		SC-SANDY CLAY				

STRUCTURE

- SG-SINGLE GRAIN
- M-MASSIVE
- CR-CRUMB
- GR-GRANULAR
- SBK-SUBANGULAR BLOCKY
- ABK-ANGULAR BLOCKY
- PL-PLATY
- PR-PRISMATIC

MINERALOGY

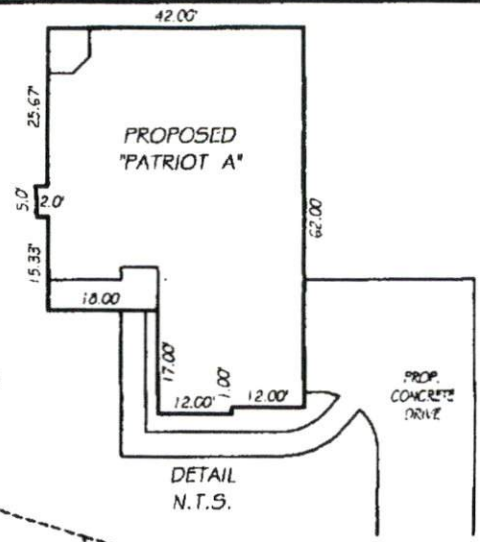
- SLIGHTLY EXPANSIVE
- EXPANSIVE

Show profile locations and other site features (dimensions, reference or benchmark, and North).

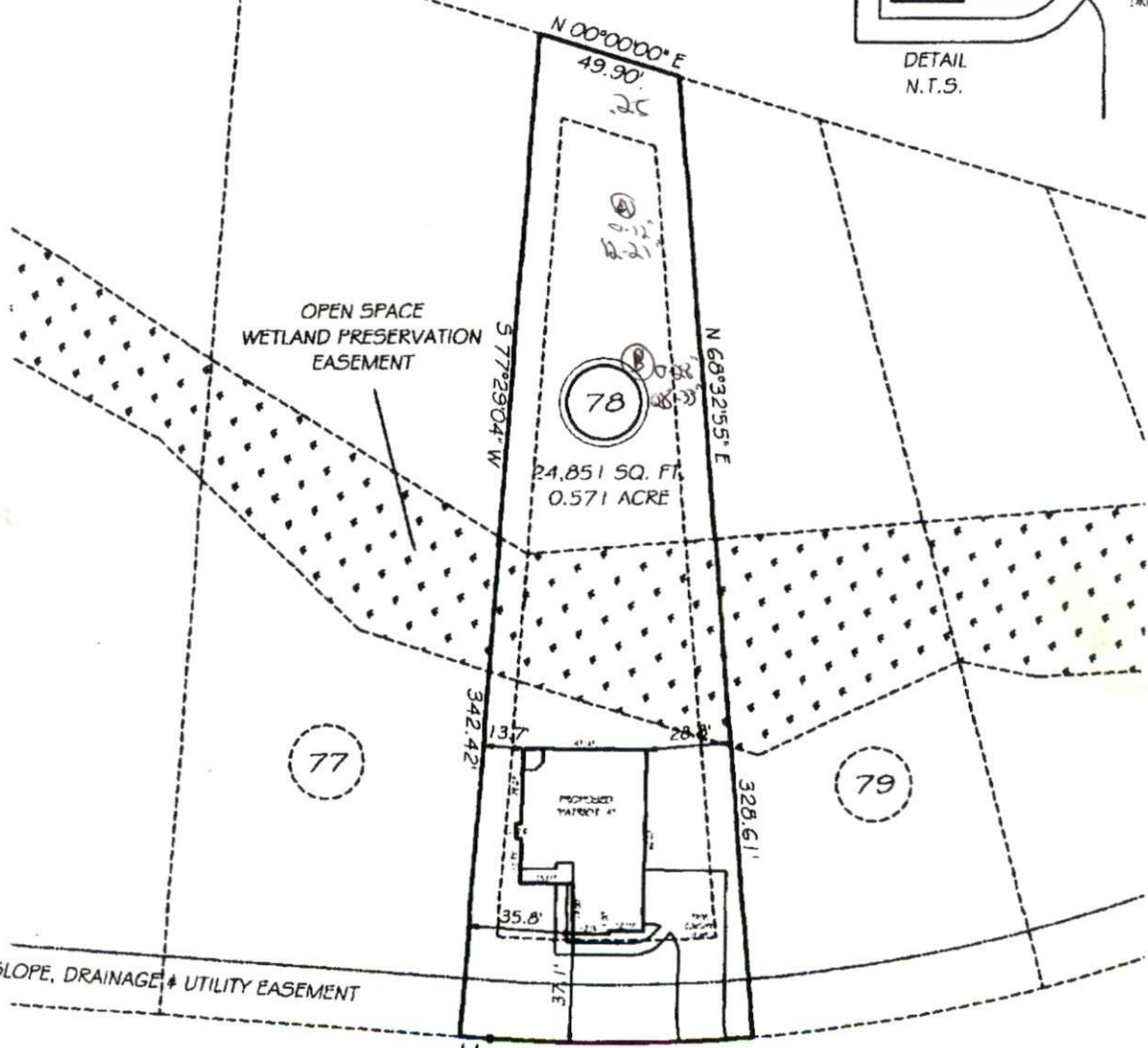


I, MICHAEL P. GRIFFIN, certify that under my direction and supervision this map was drawn from an actual field survey; that the error of closure of the survey as calculated by coordinates is 1:10,000+; that the area shown hereon was calculated by coordinates.  
 Witness my hand and seal this day of MONTH 2008.

BM 2007 PGS. 711-717  
 HARNETT CO. REGISTRY



FUTURE PHASE 3B



OPEN SPACE WETLAND PRESERVATION EASEMENT

78  
 24,851 SQ. FT.  
 0.571 ACRE

77

79

20' SLOPE, DRAINAGE & UTILITY EASEMENT

SITE PLAN APPROVAL  
 DISTRICT RA 70R USE SEDOMAHA DRIVE  
 #BEDROOMS 3 50' PUBLIC RW

6-26-09 VERBY  
 Zoning Administrator

SETBACKS

FRONT	35
REAR	25
SIDE	10
CORNER SIDE	20

Date  
 LI S12°30'38\"/>

LEGEND

PRELIMINARY

EIP EXISTING IRON PIPE FES FLARED END SECTION  
 IPR IRON PIPE SET IAA WATER METER