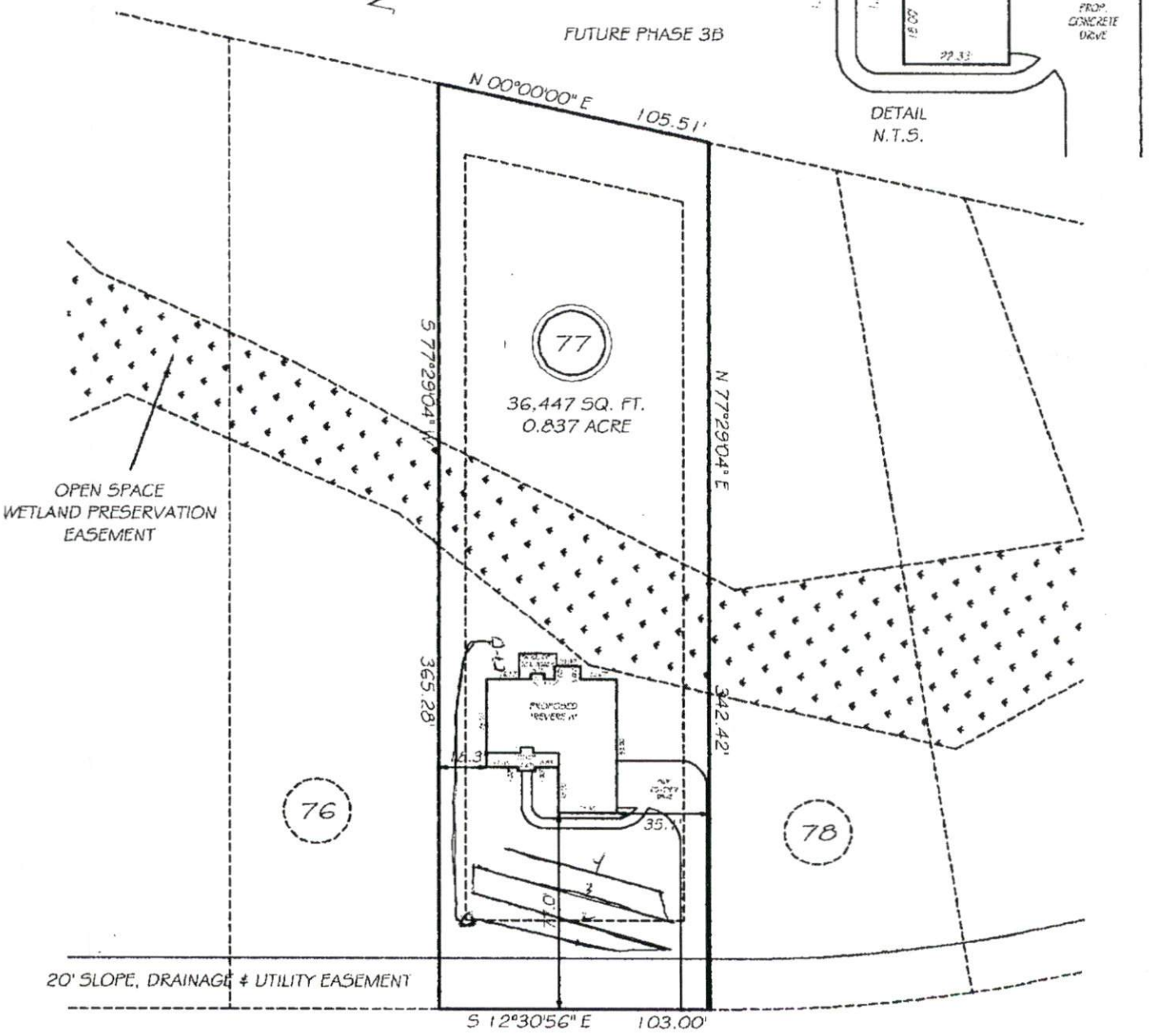


I, **MICHAEL P. GRIFFIN**, certify that under my direction and supervision this map was drawn from an actual field survey; that the error of closure of the survey as calculated by coordinates is 1: 10,000+; that the area shown hereon was calculated by coordinates.
 Witness my hand and seal this day of MONTH 2009.

BM 2007 PGS. 711-712
 HARNETT CO. REGISTRY



OMAHA DRIVE
 50' PUBLIC RW

SETBACKS

FRONT	35
REAR	25
SIDE	10
CORNER SIDE	20

REVISION: MOVED HOUSE TO 77' FROM RAW 7/29/09

SOUTHEASTERN SOIL & ENVIRONMENTAL ASSOC., INC.
PROPOSED SUBSURFACE WASTE DISPOSAL SYSTEM DETAIL SHEET

SUBDIVISION TINGEN PT LOT 77

INITIAL SYSTEM pump to approx 25' ^{red} REPAIR SYSTEM pump to cone (w/ PRESTI-ESTASIT)

BENCHMARK ELEV. 100.0 LOCATION Elec Box Pad (Top) 77/78

TYPE OF DISTRIBUTION sewer

proposed LTAR = 0.95 gal/ft²

LINE	ELEVATION	LENGTH	FLAG COLOR
1	48.75	60'	O
2	48.33	80'	B
3	47.58	80'	O
4	47.80	40'	B
		<u>260'</u>	
		AVAIL	

Initial

BY M EAKER DATE 02/09

FLAG COLOR: Y = YELLOW R = RED W = WHITE B = BLUE O = ORANGE P = PINK

6.40

Drive on side prop. line
77' setback

SOUTHEASTERN SOIL & ENVIRONMENTAL ASSOC., INC.
PROPOSED SUBSURFACE WASTE DISPOSAL SYSTEM DETAIL SHEET

SUBDIVISION TINGEN PT LOT 77

INITIAL SYSTEM pump to approved well REPAIR SYSTEM plug to conn. w/ PPE21-E974 GWT

BENCHMARK ELEV. 100.0 LOCATION Elec Box Pad (Top) 77/78

TYPE OF DISTRIBUTION sewer

proposed LTAR = 0.95 gpi/ft

LINE	ELEVATION	LENGTH	FLAG COLOR
1	48.75	60'	O
2	48.33	80'	B
3	47.56	80'	O
4	47.00	40'	B
		<u>240'</u>	
		AVAIL	

Initial

BY M EAKER DATE 02/09

FLAG COLOR: Y = YELLOW R = RED W = WHITE B = BLUE O = ORANGE P = PINK

6.40

Drive on side prop. line
77' setback

