

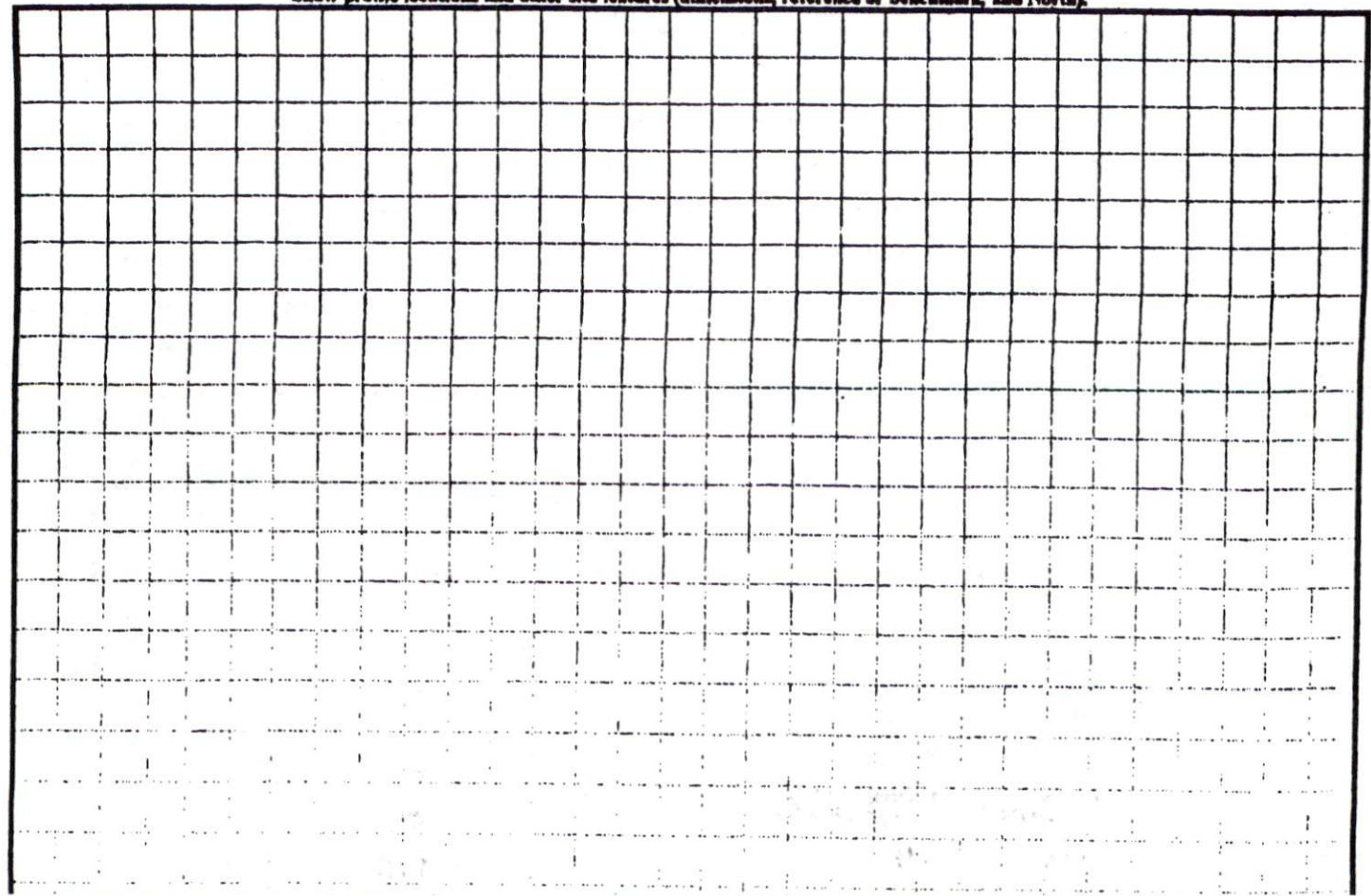
COMMENTS: _____

<u>LANDSCAPE POSITIONS</u>	<u>GROUP</u>	<u>TEXTURES</u>	<u>.1955 LTAR</u>	<u>CONSISTENCE MOIST</u>	<u>WET</u>
R-RIDGE	I	S-SAND	1.2 - 0.8	VFR-VERY FRIABLE FR-FRIABLE	NS-NON-STICKY SS-SLIGHTLY STICKY
S-SHOULDER SLOPE		LS-LOAMY SAND			
L-LINEAR SLOPE					
FS-FOOT SLOPE	II	SL-SANDY LOAM	0.8 - 0.6	FI-FIRM VFI-VERY FIRM	S-STICKY VS-VERY STICKY
N-NOSE SLOPE		L-LOAM			
H-HEAD SLOPE	III	SI-SILT-	0.6 - 0.3	EFI-EXTREMELY FIRM	NP-NON-PLASTIC SP-SLIGHTLY STICKY
CC-CONCLAVE SLOPE		SIL-SILT LOAM			
CV-CONVEX SLOPE		CL-CLAY LOAM			
T-TERRACE		SCL-SANDY CLAY LOAM			
FP-FLOOD PLAN		SICL-SILTY CLAY LOAM			
	IV	SIC-SILTY CLAY	0.4 - 0.1		P-PLASTIC VP-VERY PLASTIC
		C-CLAY			
		SC-SANDY CLAY			

STRUCTURE
 SG-SINGLE GRAIN
 M-MASSIVE
 CR-CRUMB
 GR-GRANULAR
 SBK-SUBANGULAR BLOCKY
 ABK-ANGULAR BLOCKY
 PL-PLATY
 PR-PRISMATIC

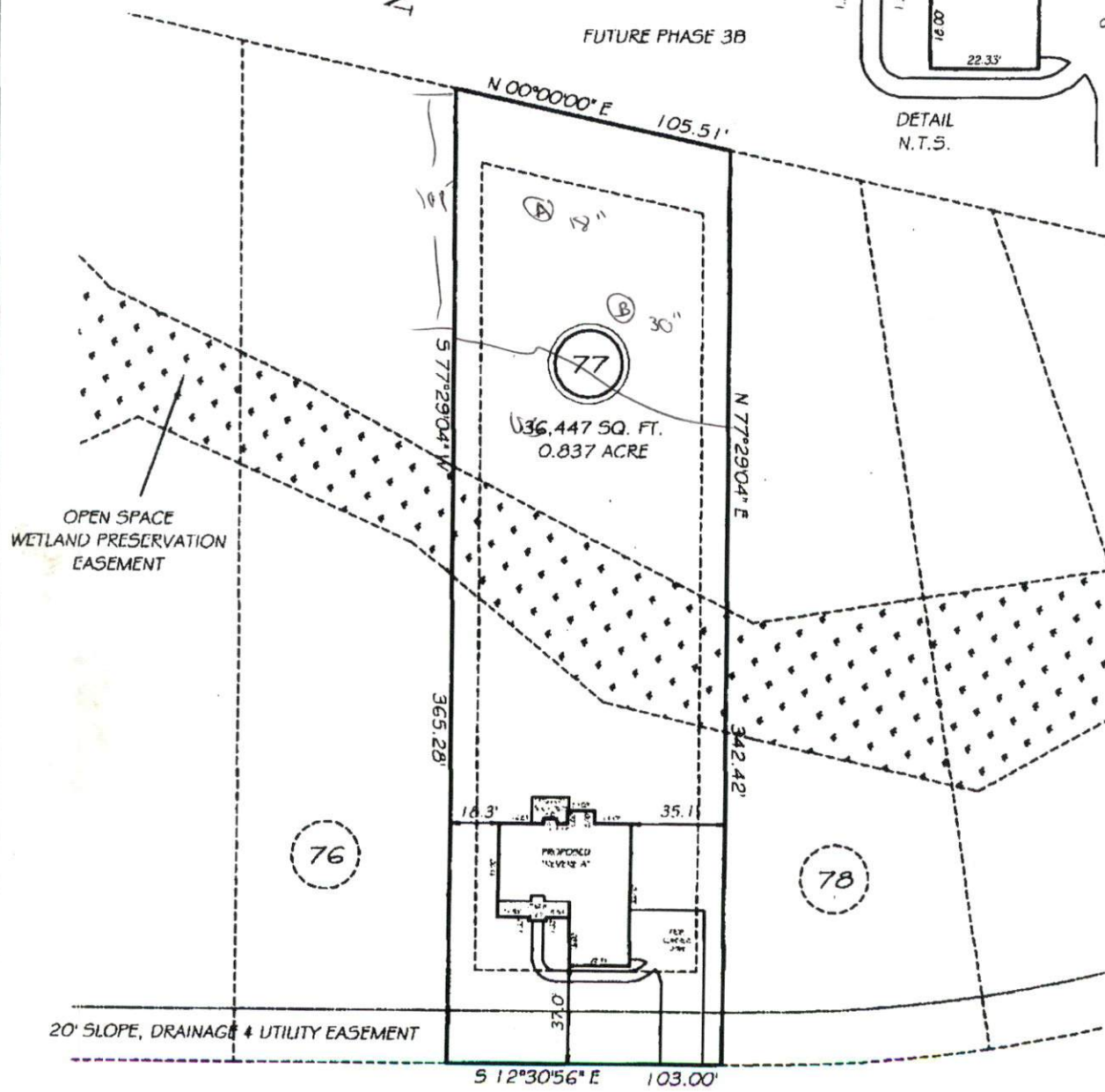
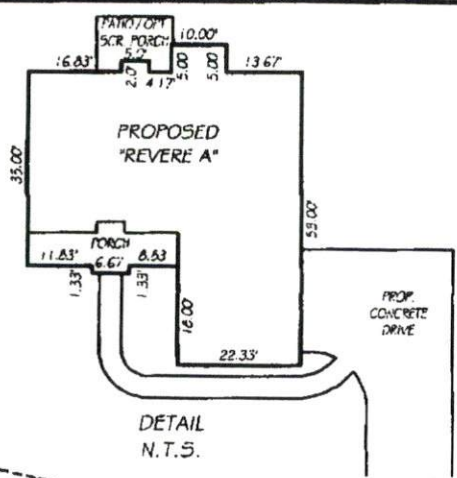
MINERALOGY
 SLIGHTLY EXPANSIVE
 EXPANSIVE

Show profile locations and other site features (dimensions, reference or benchmark, and North).



I, MICHAEL P. GRIFFIN, certify that under my direction and supervision this map was drawn from an actual field survey; that the error of closure of the survey as calculated by coordinates is 1:10,000+; that the area shown hereon was calculated by coordinates.
 Witness my hand and seal this day of MONTH 2008.

BM 2007 PGS. 711-717
 HARNETT CO. REGISTRY



SITE PLAN APPROVAL **OMAHA DRIVE**
 DISTRICT DA 20B USE SFP 50' PUBLIC RW

#BEDROOMS 3
6-26-07 V. C. Paul
 Date Zoning Administrator

SETBACKS

FRONT	35
REAR	25
SIDE	10
CORNER SIDE	20

PRELIMINARY

LEGEND

- EIP EXISTING IRON PIPE
- IPS IRON PIPE SET
- FES FLARED END SECTION
- W/M WATER METER