

SOUTHEASTEN SOIL & ENVIRONMENTAL ASSOC, INC.

PROPOSED SUBSURFACE WASTE DISPOSAL SYSTEM DETAIL SHEET

SUBDIVISION Ashford

LOT 111

INITIAL SYSTEM Approved 25% reduction

REPAIR PPBPS (w/Pressure manifold)

DISTRIBUTION serial

DISTRIBUTION pressure manifold

BENCHMARK 100.0

LOCATION Top of Electric pad

NO. BEDROOMS 3

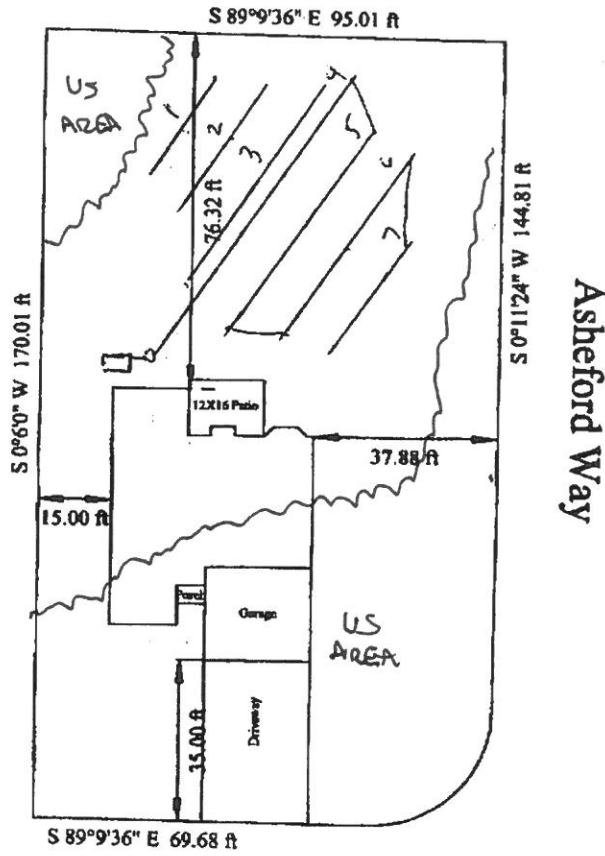
proposed  $CTAP = 0.55 \text{ gal/ft}^2$  (repair)  
 $0.45 \text{ gal/ft}^2$  (initial)

| <u>LINE</u> | <u>FLAG COLOR</u> | <u>ELEVATION</u> | <u>ACTUAL LENGTH</u> |
|-------------|-------------------|------------------|----------------------|
| 1           | R                 | 102.07           | 25'                  |
| 2           | W                 | 101.75           | 35'                  |
| 3           | R                 | 101.42           | 53'                  |
|             |                   |                  | <u>113'</u>          |
| 4           | B                 | 100.84           | 75'                  |
| 5           | W                 | 100.17           | 54'                  |
| 6           | R                 | 99.84            | 50'                  |
| 7           | W                 | 99.25            | 30'                  |
|             |                   |                  | <u>209'</u>          |

Initial {

BY M Eaker

DATE 07/2009



Wynngate Dr.

SITE PLAN APPROVAL

DISTRICT RA20R USE STD

#BEDROOMS 3

Date 7/20/09 [Signature]  
Zoning Administrator

# THE JACKSON

Lot 111 Asheford  
K&C Investment Properties  
Scale 1" = 40'

09-500-22235

\* Revised per Mike Eaker \*