

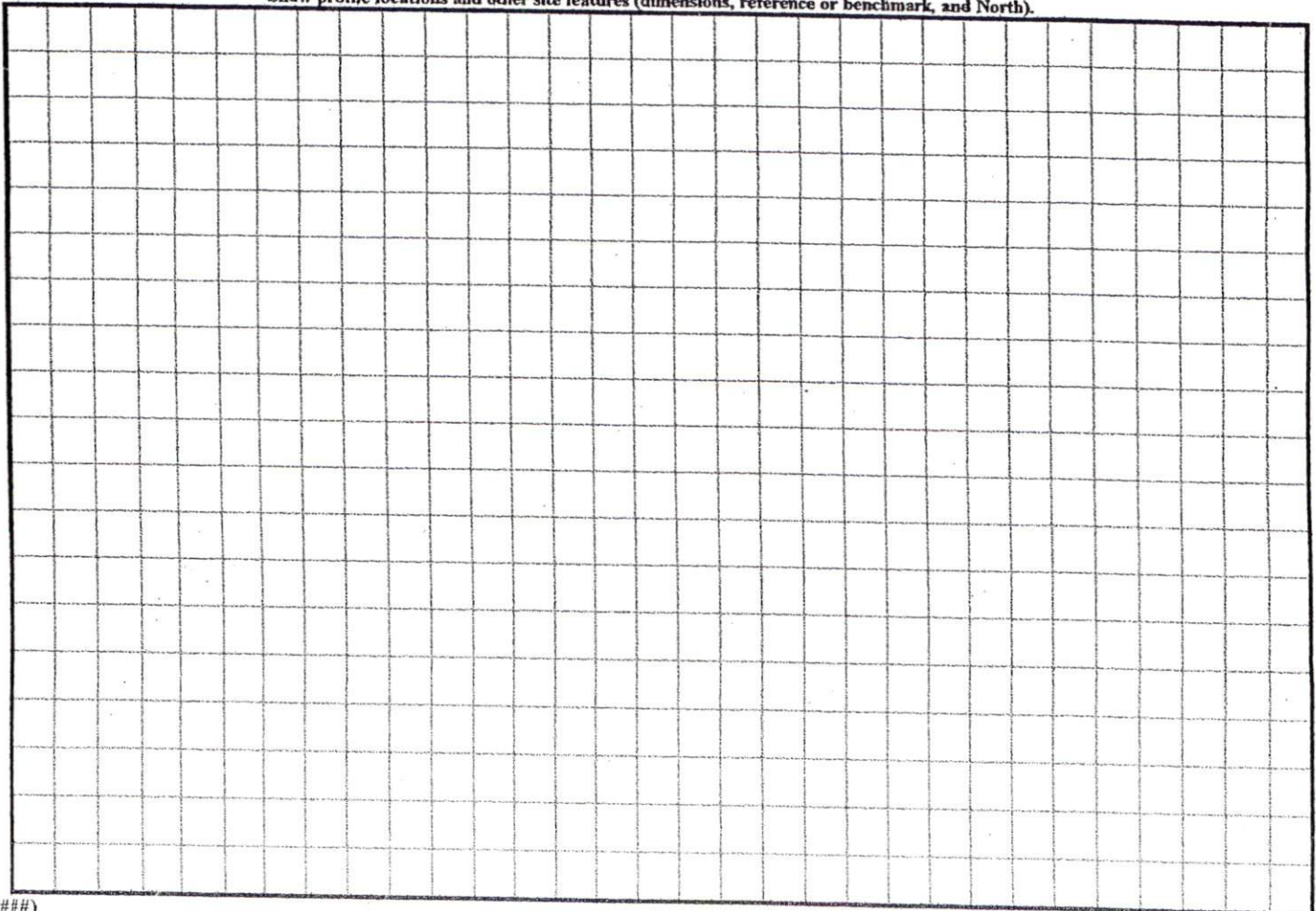
COMMENTS: _____

<u>LANDSCAPE POSITIONS</u>	<u>GROUP</u>	<u>TEXTURES</u>	<u>.1955 LTAR</u>	<u>CONSISTENCE MOIST</u>	<u>WET</u>
R-RIDGE	I	S-SAND	1.2 - 0.8	VFR-VERY FRIABLE FR-FRIABLE FI-FIRM VFI-VERY FIRM EFI-EXTREMELY FIRM	NS-NON-STICKY SS-SLIGHTLY STICKY S-STICKY VS-VERY STICKY NP-NON-PLASTIC SP-SLIGHTLY STICKY P-PLASTIC VP-VERY PLASTIC
S-SHOULDER SLOPE		LS-LOAMY SAND			
L-LINEAR SLOPE	II	SL-SANDY LOAM	0.8 - 0.6		
FS-FOOT SLOPE		L-LOAM			
N-NOSE SLOPE	III	SI-SILT-	0.6 - 0.3		
H-HEAD SLOPE		SIL-SILT LOAM			
CC-CONCLAVE SLOPE		CL-CLAY LOAM			
CV-CONVEX SLOPE		SCL-SANDY CLAY LOAM			
T-TERRACE		SICL-SILTY CLAY LOAM			
FP-FLOOD PLAN	IV	SIC-SILTY CLAY	0.4 - 0.1		
		C-CLAY			
		SC-SANDY CLAY			

STRUCTURE
 SG-SINGLE GRAIN
 M-MASSIVE
 CR-CRUMB
 GR-GRANULAR
 SBK-SUBANGULAR BLOCKY
 ABK-ANGULAR BLOCKY
 PL-PLATY
 PR-PRISMATIC

MINERALOGY
 SLIGHTLY EXPANSIVE
 EXPANSIVE

Show profile locations and other site features (dimensions, reference or benchmark, and North).



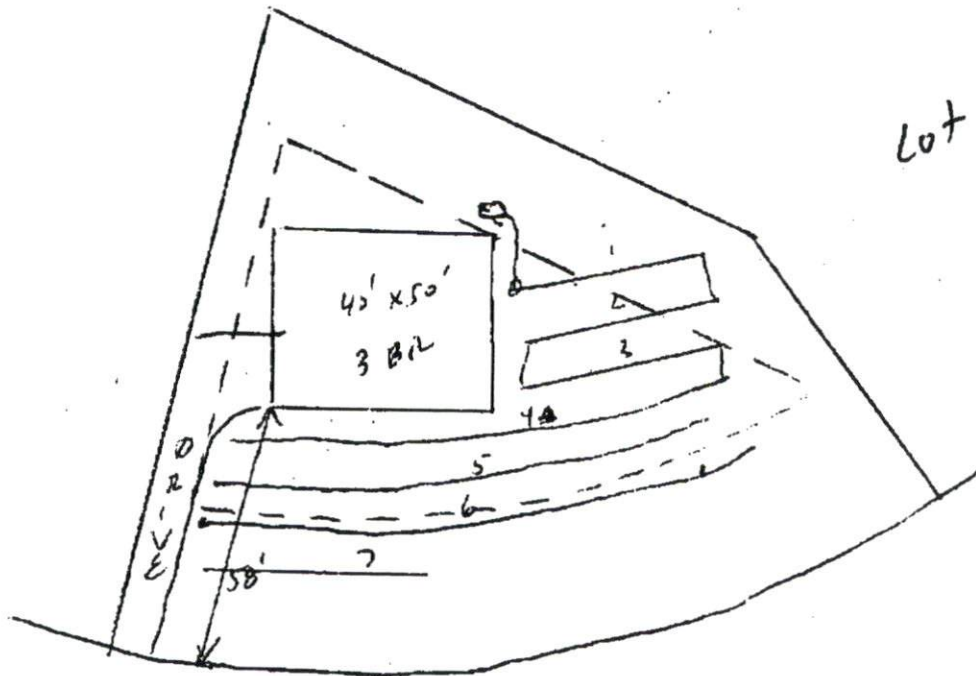
0950022209A

Southeastern Soil & Environmental Associates, Inc.

P.O. Box 9321
Fayetteville, NC 28311
Phone/Fax (910) 822-4540
Email mike@southeasternsoil.com

Tingen Pt
Lot 56

Proposed Septic Layout



Lot 56 TP

1" = 40'

FILE

SOUTHEASTEN SOIL & ENVIRONMENTAL ASSOC, INC.

PROPOSED SUBSURFACE WASTE DISPOSAL SYSTEM DETAIL SHEET

SUBDIVISION Troyer Pt

LOT 56

INITIAL SYSTEM Approved 25% reduction

REPAIR Approved 25% reduction

DISTRIBUTION series

DISTRIBUTION series

BENCHMARK 100.0

LOCATION Front corner s/s/b

NO. BEDROOMS 3

proposed CAP = 0.4 gal/ft²

<u>LINE</u>	<u>FLAG COLOR</u>	<u>ELEVATION</u>	<u>ACTUAL LENGTH</u>
1	W	105.25	45'
2	O	104.17	45'
3	W	103.00	45'
4	R	101.58	100'
			<u>235'</u>
5	W	100.25	100'
6	R	100.17	100'
7	W	99.34	40'
			<u>240'</u>

In-line {

1	W	105.25	45'
2	O	104.17	45'
3	W	103.00	45'
4	R	101.58	100'
			<u>235'</u>
5	W	100.25	100'
6	R	100.17	100'
7	W	99.34	40'
			<u>240'</u>

BY M EAKER

DATE 08/20-9