

SOUTHEASTERN SOIL & ENVIRONMENTAL ASSOC, INC.

PROPOSED SUBSURFACE WASTE DISPOSAL SYSTEM DETAIL SHEET

SUBDIVISION Ashford

LOT 140

INITIAL SYSTEM \_\_\_\_\_

REPAIR PUMP TO PPBPS  
(PANEL BLOCK)

DISTRIBUTION SEMAC

DISTRIBUTION SEMAC

BENCHMARK 100.0

LOCATION rear corner 138/140

NO. BEDROOMS 3

proposed LTAR = 0.7 gpd/ft<sup>2</sup> (initial)  
" " = 0.8 gpd/ft<sup>2</sup> repair

<u>LINE</u>	<u>FLAG COLOR</u>	<u>ELEVATION</u>	<u>ACTUAL LENGTH</u>
-------------	-------------------	------------------	----------------------

Initial

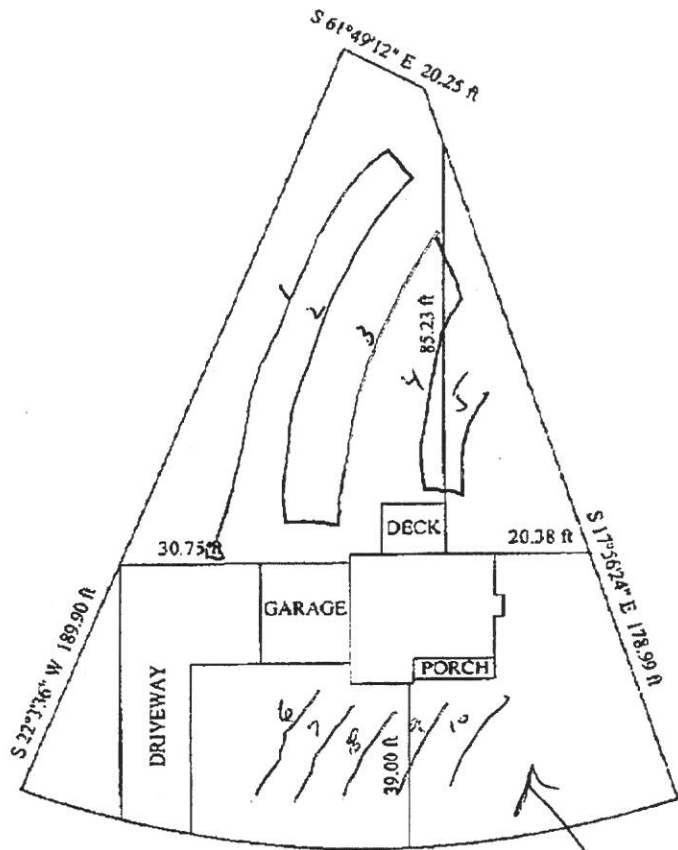
1	Y	98.17	90'
2	W	97.34	60'
3	Y	96.50	50'
4	W	95.92	38'
5	Y	95.42	25'
			<u>263' AVAIL</u>
6		94.75	25'
7		93.92	25'
8		93.08	25'
9		92.75	25'
			<u>100'</u>

BY M EAKER

DATE 04/2009

REPAIR 0-43+ S/L  
C-2 > 34"

MOST RESTRICTION  
INITIAL 0-20 USAND (VF, W<sub>10</sub>)  
20-36+ SCL (F<sub>1</sub>, S<sub>10</sub>)  
LTAR = 0.4 gpd/ft<sup>2</sup>  
C-2 @ 34"



Lockwood Dr.

P. PANEL BUCKLE REPAIR.

**THE LAUREL**

Jason Price Construction Inc.  
Lot 140 Ashford  
Scale 1" = 40'