

SOUTHEASTERN SOIL & ENVIRONMENTAL ASSOC., INC.
PROPOSED SUBSURFACE WASTE DISPOSAL SYSTEM DETAIL SHEET

SUBDIVISION Ashford LOT 139

INITIAL SYSTEM pump to approved 25% reduction REPAIR SYSTEM pump to approved 25% reduction

BENCHMARK ELEV. 100.0 LOCATION rear corner 140/141

TYPE OF DISTRIBUTION serial

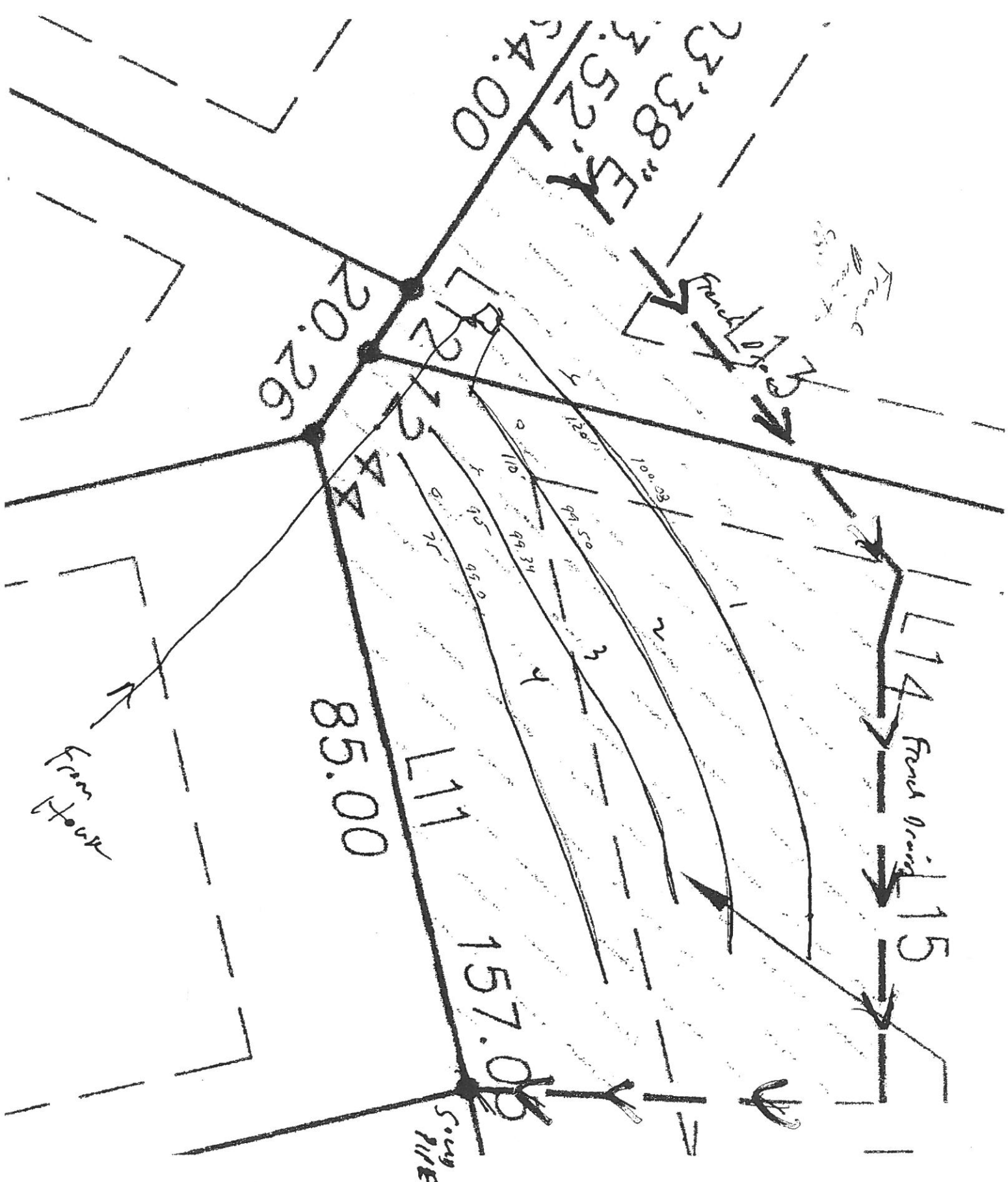
proposed LTAR = 0.5 gpd/ft²

LINE	ELEVATION	LENGTH	FLAG COLOR
1	100.08	120'	Y
2A	99.50	60'	O
		<u>180'</u>	
2B	99.50	50'	O
3	99.34	90'	Y
4	99.0	40'	O
		<u>180'</u>	

BY M EAKER DATE 03/2010

FLAG COLOR: Y = YELLOW R = RED W = WHITE B = BLUE O = ORANGE P = PINK

French Drain to be installed to 48". Gravel depth
area 6-48" Around system. Sewer Pipe Down Lot
Cone 139/139



166097

11/11/11 200-47

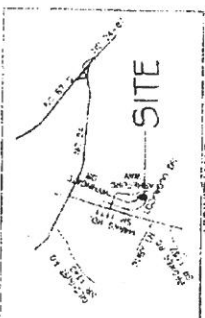
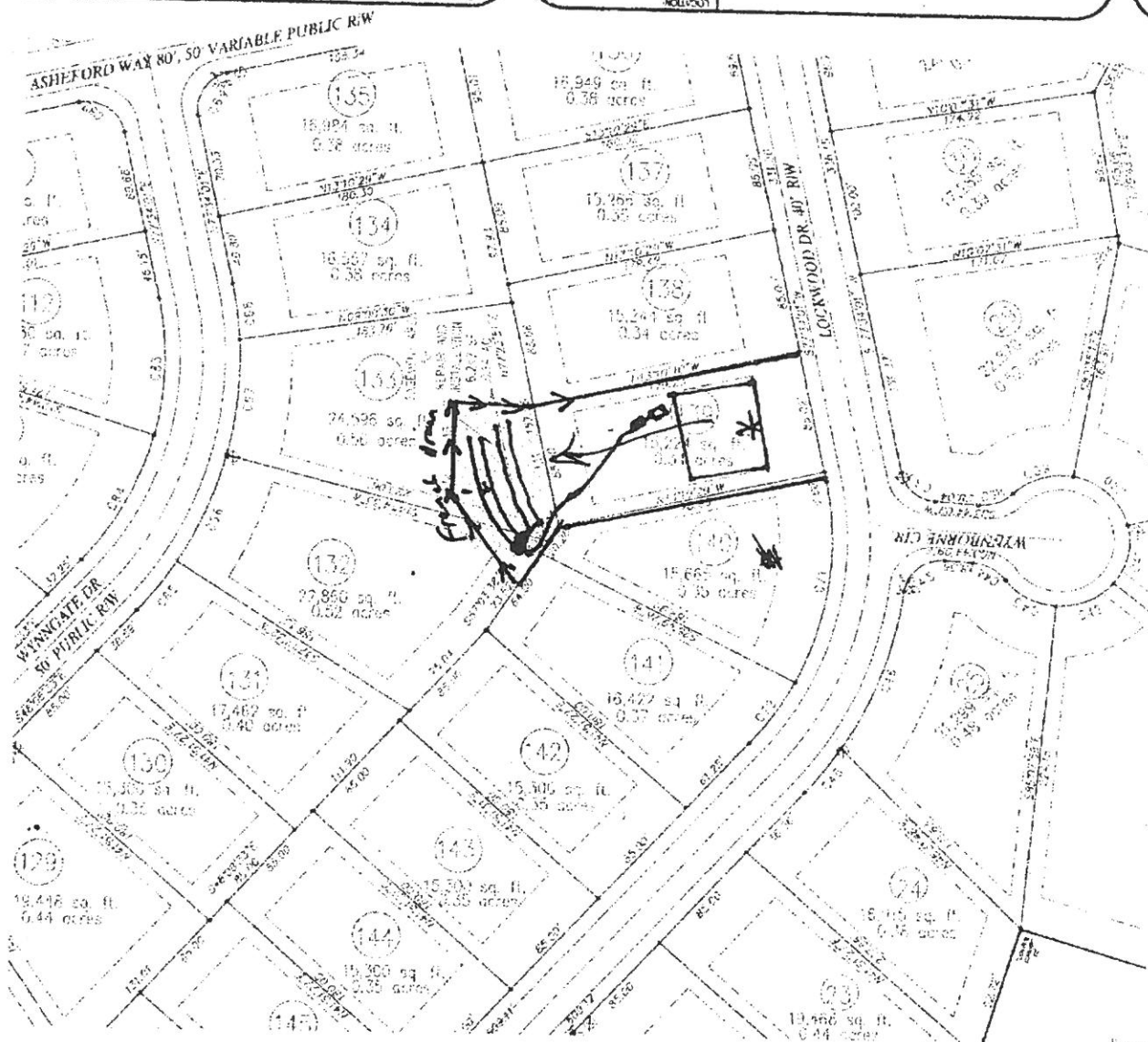
PROJECT 111
S-1
SHEET 1 OF 2

EASEMENT MAP FOR LOT 139 ASHFORD SUBDIVISION

LOCATION
MAPS FROM LOT 111
PERSONAL TOWNSHIP
SOUTH SPRINGS
HARRETT COUNTY, OK
PROPERTY OWNERS
REARFACE, INC.
LAWSON PRICE CONSTRUCTION, INC.

PLAN APPROVAL
DESIGNED BY
HORIZONTAL SCALE
1"=100'
VERTICAL SCALE
1"=10'
DEMAN BY
N/A
DATE DRAINED
03-03-09
SURVEY INFORMATION
CONTRACT NO.
03-03-09

Enoch
Engineers, P.A.
CONSULTING ENGINEERS & SURVEYORS
1405 W. Highway 20, Sand Springs, OK 74074
Phone: (918) 477-5555 Fax: (918) 477-5555
E-mail: enoch@enoch-engineers.com



SURVEY NOTATION
1. ALL DISTANCES ARE IN FEET AND DECIMALS THEREOF.
2. ALL BEARINGS ARE TRUE BEARINGS.
3. ALL CURVES ARE CIRCULAR UNLESS OTHERWISE NOTED.
4. ALL CORNERS ARE TO BE MARKED WITH IRON PIPES OR IRON RODS.
5. ALL EASEMENTS ARE TO BE SHOWN BY A RED LINE.
6. ALL EASEMENTS ARE TO BE SHOWN BY A RED LINE.
7. ALL EASEMENTS ARE TO BE SHOWN BY A RED LINE.
8. ALL EASEMENTS ARE TO BE SHOWN BY A RED LINE.
9. ALL EASEMENTS ARE TO BE SHOWN BY A RED LINE.
10. ALL EASEMENTS ARE TO BE SHOWN BY A RED LINE.

REGISTER OF DEEDS CERTIFICATE
COUNTY OF HARRETT
STATE OF OKLAHOMA
I, Michael Eaker, Surveyor, do hereby certify that the foregoing is a true and correct copy of the original plat on file in my office.
MICHAEL EAKER
DATE 2-15-10

REGISTER OF DEEDS CERTIFICATE
STATE OF OKLAHOMA
COUNTY OF HARRETT
I, Michael Eaker, Surveyor, do hereby certify that the foregoing is a true and correct copy of the original plat on file in my office.
MICHAEL EAKER
DATE 2-15-10

LINE	LENGTH	BEARING
1	32.00	S77°45'17\"
2	47.55	N23°03'25\"
3	11.91	S70°25'35\"
4	3.78	S70°25'35\"
5	53.14	S23°25'11\"
6	52.55	S23°25'11\"
7	57.24	S23°25'11\"

ATTACHE
16 FRONT SETBACK
17 REAR SETBACK
18 SIDE SETBACK
19 SIDE SETBACK
20 SIDE SETBACK
21 SIDE SETBACK
22 SIDE SETBACK
23 SIDE SETBACK
24 SIDE SETBACK
25 SIDE SETBACK
26 SIDE SETBACK
27 SIDE SETBACK
28 SIDE SETBACK
29 SIDE SETBACK
30 SIDE SETBACK
31 SIDE SETBACK
32 SIDE SETBACK
33 SIDE SETBACK
34 SIDE SETBACK
35 SIDE SETBACK
36 SIDE SETBACK
37 SIDE SETBACK
38 SIDE SETBACK
39 SIDE SETBACK
40 SIDE SETBACK
41 SIDE SETBACK
42 SIDE SETBACK
43 SIDE SETBACK
44 SIDE SETBACK
45 SIDE SETBACK
46 SIDE SETBACK
47 SIDE SETBACK
48 SIDE SETBACK
49 SIDE SETBACK
50 SIDE SETBACK
51 SIDE SETBACK
52 SIDE SETBACK
53 SIDE SETBACK
54 SIDE SETBACK
55 SIDE SETBACK
56 SIDE SETBACK
57 SIDE SETBACK
58 SIDE SETBACK
59 SIDE SETBACK
60 SIDE SETBACK
61 SIDE SETBACK
62 SIDE SETBACK
63 SIDE SETBACK
64 SIDE SETBACK
65 SIDE SETBACK
66 SIDE SETBACK
67 SIDE SETBACK
68 SIDE SETBACK
69 SIDE SETBACK
70 SIDE SETBACK
71 SIDE SETBACK
72 SIDE SETBACK
73 SIDE SETBACK
74 SIDE SETBACK
75 SIDE SETBACK
76 SIDE SETBACK
77 SIDE SETBACK
78 SIDE SETBACK
79 SIDE SETBACK
80 SIDE SETBACK
81 SIDE SETBACK
82 SIDE SETBACK
83 SIDE SETBACK
84 SIDE SETBACK
85 SIDE SETBACK
86 SIDE SETBACK
87 SIDE SETBACK
88 SIDE SETBACK
89 SIDE SETBACK
90 SIDE SETBACK
91 SIDE SETBACK
92 SIDE SETBACK
93 SIDE SETBACK
94 SIDE SETBACK
95 SIDE SETBACK
96 SIDE SETBACK
97 SIDE SETBACK
98 SIDE SETBACK
99 SIDE SETBACK
100 SIDE SETBACK

