

may 28 09 08:44 michael eaker 3108224540 p.1

Southeastern Soil & Environmental Associates, Inc.

P.O. Box 9321
Fayetteville, NC 28311
Phone/Fax (910) 822-4540
Email mike@southeasternsoil.com

May 28, 2009

Mr. Bryan McSwain
Harnett County Health Department
307 Cornelius Harnett Blvd.
Lillington, NC 27546

Re: Hydraulic conductivity (Ksat) analysis for subsurface waste disposal, Asheford Subdivision, Lot 136 (Jason Price Construction), Lockwood Drive, Harnett County, North Carolina

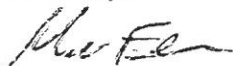
Dear Mr. McSwain,

An evaluation of soil and hydraulic conductivity (Ksat) has been conducted, at the request of Jason Price, on the aforementioned property. The purpose of the investigation was to determine soil absorption rates for a proposed subsurface septic system to serve a 3 bedroom single family residence. All ratings and determinations were made in accordance with "Laws and Rules for Sanitary Sewage Collection, Treatment, and Disposal, 15A NCAC 18A .1900".

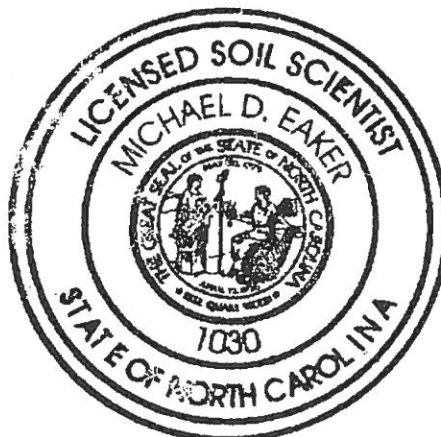
Two compact constant head permeameter (CCHP) measurements were made (in the area of the repair system) to determine a Ksat rate at depths of 44 and 55 inches (there was approximately 12 inches of fill material observed at each boring location). The Ksat measurement at 44 inches (see map for location) equaled 2.04 cm/hr. This equates to 5.98 gpd/sq.ft. The Ksat measurement at 55 inches (see map for location) equaled 0.87 cm/hr. This equates to 2.56 gpd/sq.ft. Using 10% of the lowest Ksat (typical for systems without pretreatment) equates to 0.256 gpd/sq.ft.

Our repair system is based on a proposed 0.25 gpd/sq. ft. (using a 25% reduction system; see map).

Sincerely,



Mike Eaker
President



SOUTHEASTEN SOIL & ENVIRONMENTAL ASSOC, INC.

PROPOSED SUBSURFACE WASTE DISPOSAL SYSTEM DETAIL SHEET

SUBDIVISION Ashford

LOT 136

INITIAL SYSTEM Approved 25% reduction

REPAIR Approved 25% reduction

DISTRIBUTION Serial

DISTRIBUTION serial

BENCHMARK 100.0

LOCATION Rear corner 136/135

NO. BEDROOMS 3

proposed UTR = 0.7 gal/ft² (initial)
" " = 0.25 gal/ft² (repair)

<u>LINE</u>	<u>FLAG COLOR</u>	<u>ELEVATION</u>	<u>ACTUAL LENGTH</u>
-------------	-------------------	------------------	----------------------

1	W	100.0	70'
2	Y	99.34	130'
3	W	99.34	80'
4	Y	99.17	80'
			<u>360'</u>

5	W	98.84	90'
6	R	98.67	90'
7	W	98.17	50'
8	R	98.17	30'
			<u>260' AHEAD</u>

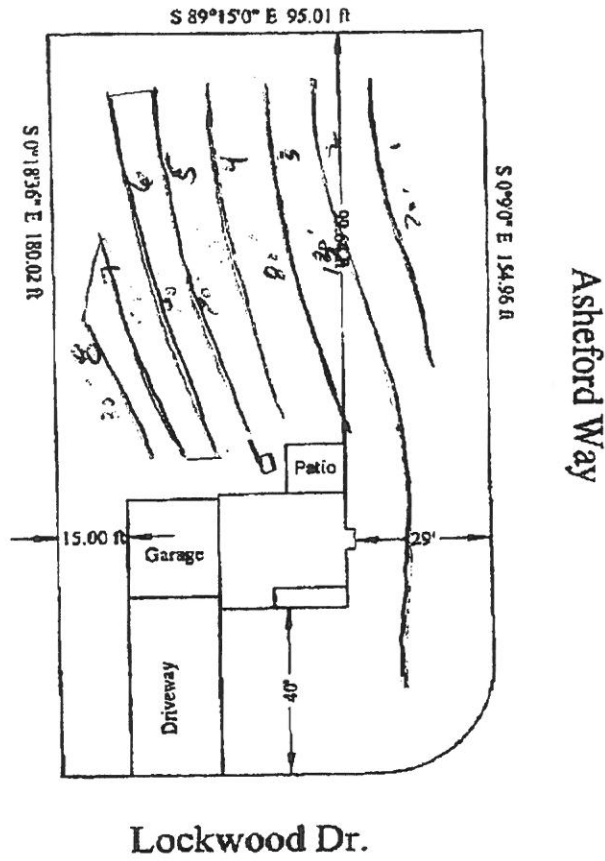
Initial

BY M EAKER

DATE 05/20/09

NOTE: THERE IS 12-20" OF FILL OVER PORTIONS OF SYSTEM. THE LAYOUT TAKES THIS INTO ACCOUNT. INSTALL DEPTHS WILL VARY. START AT 18" AT WOODWORTH DRIVE. END. DEPTHS WILL LIKELY BE UP TO 36" AT REAR PROP. LINE.

Proposed Septic



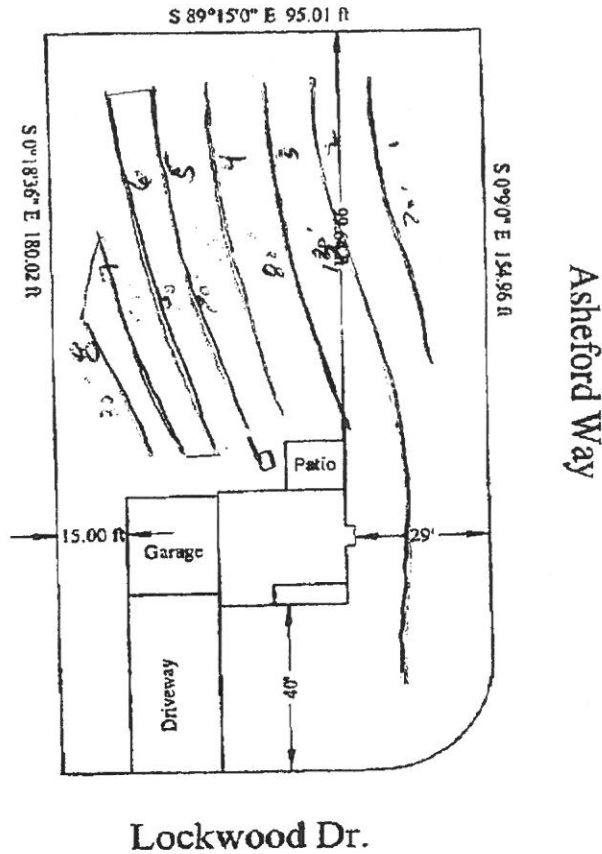
THE GREYSON

Lot 136 Ashford
B&B Land Investors LLC
Scale 1"=40'

09-500-21789

Jason Price 814-4236

proposed septic



THE GREYSON

Lot 136 Ashford
 B&B Land Investors LLC
 Scale 1"=40'

09-500-21789

Jason Price 814-4236