

SOUTHEASTEN SOIL & ENVIRONMENTAL ASSOC, INC.

PROPOSED SUBSURFACE WASTE DISPOSAL SYSTEM DETAIL SHEET

SUBDIVISION Tinga Pt

LOT 41

INITIAL SYSTEM Approved 25% reduction

REPAIR pump to approved 25% reduction

DISTRIBUTION D-box

DISTRIBUTION D-box

BENCHMARK 100.0

LOCATION rear corner 41/42

NO. BEDROOMS 3

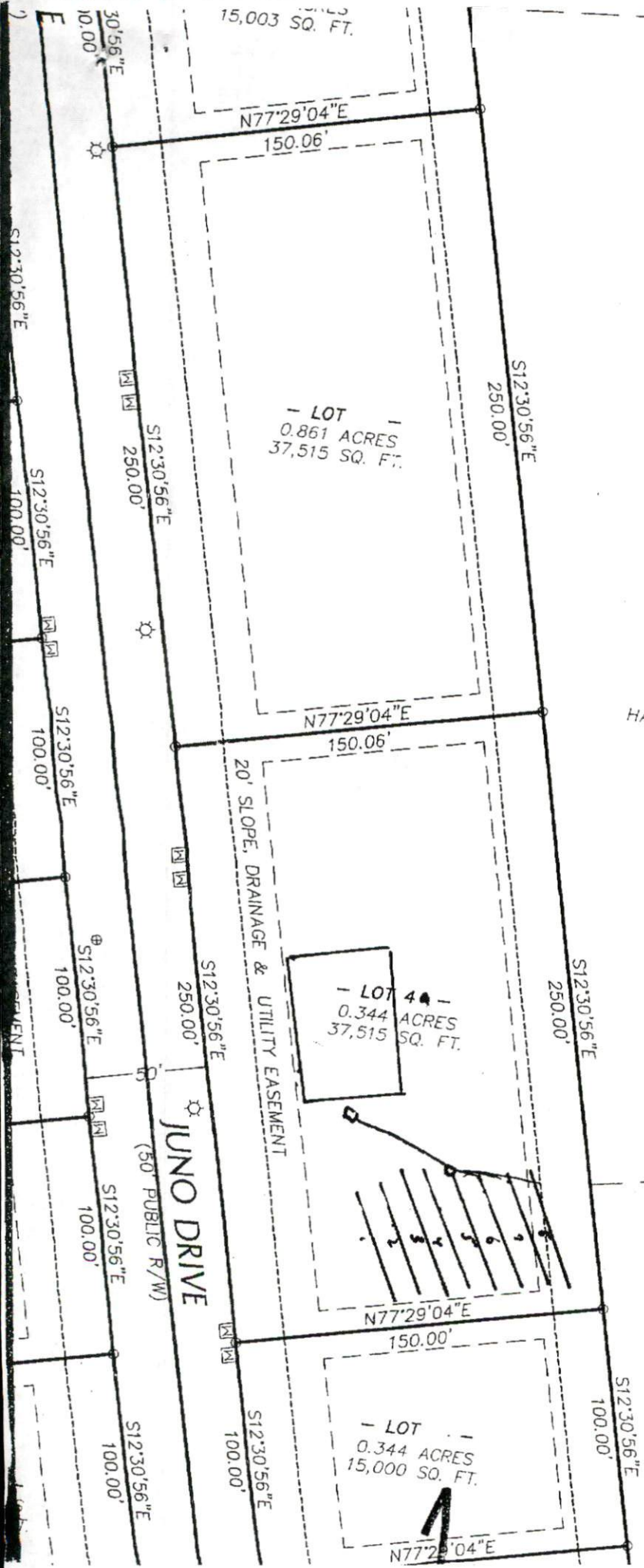
proposed LTRR = 0.95 gal/Hr

<u>LINE</u>	<u>FLAG COLOR</u>	<u>ELEVATION</u>	<u>ACTUAL LENGTH</u>
1	-	-	50'
2	-	-	50'
3	-	-	50'
4	-	-	50'
			<u>200'</u>
5	B	101.42	50'
6	O	101.00	50'
7	B	100.75	50'
8	.	100.50	50'
			<u>200'</u>

Initial

BY _____

DATE _____



N/F
 LOT 103
 DUNROVIN ESTATES II
 PC C, SLIDE 196-D
 HARNETT COUNTY REGISTER
 OF DEEDS
 ZONE: RA-20R

N/F
 LOT 103
 DUNROVIN ESTATES II
 PC C, SLIDE 196-D
 HARNETT COUNTY REGISTER
 OF DEEDS
 ZONE: RA-20R

- LOT 44 -
 0.344 ACRES
 37,515 SQ. FT.

- LOT
 0.344 ACRES
 15,000 SQ. FT.

1