

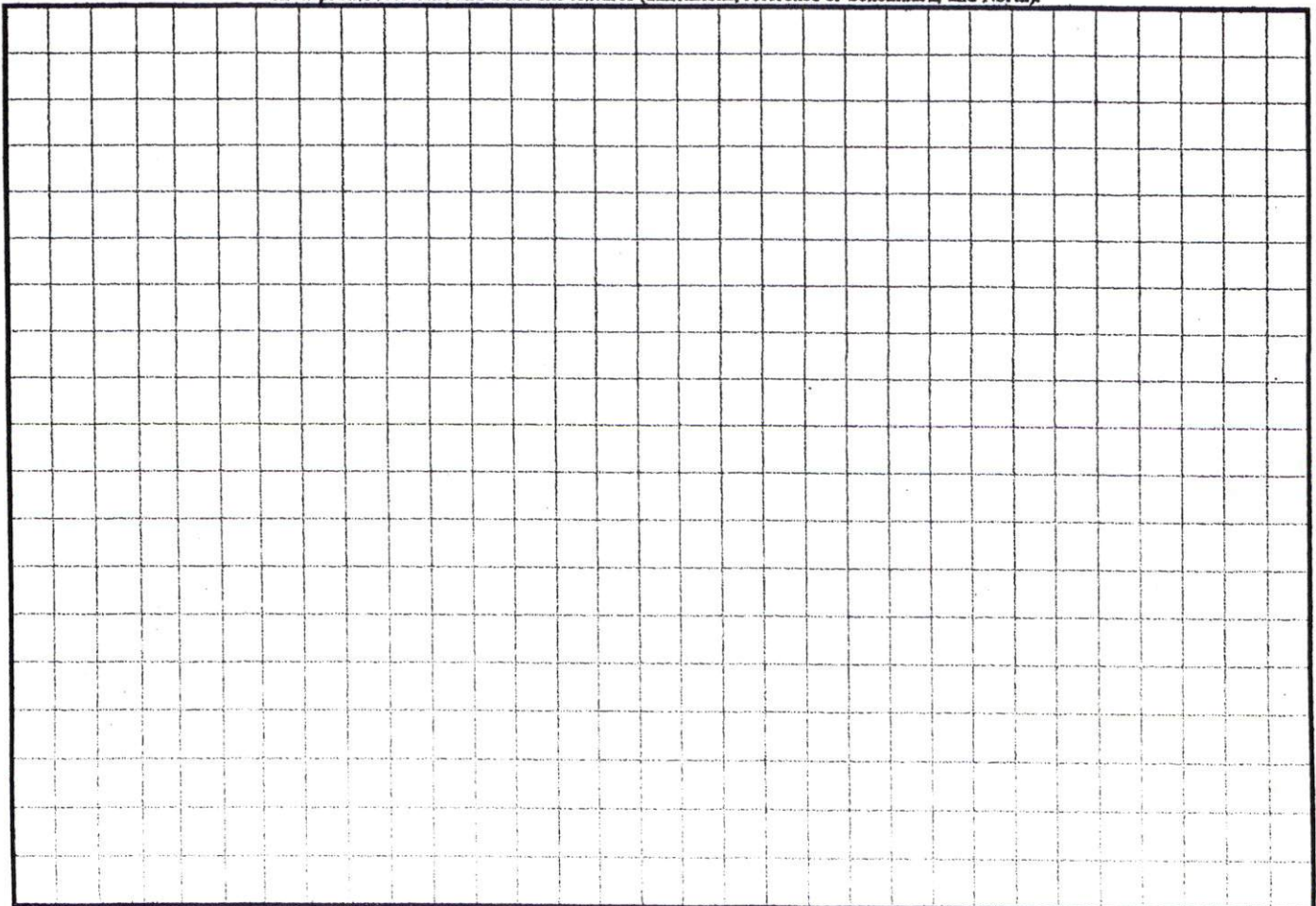
COMMENTS: _____

<u>LANDSCAPE POSITIONS</u>	<u>GROUP</u>	<u>TEXTURES</u>	<u>.1955 LTAR</u>	<u>CONSISTENCE MOIST</u>	<u>WET</u>
R-RIDGE	I	S-SAND	1.2 - 0.8	VFR-VERY FRIABLE	NS-NON-STICKY
S-SHOULDER SLOPE		LS-LOAMY SAND		FR-FRIABLE	SS-SLIGHTLY STICKY
L-LINEAR SLOPE	II	SL-SANDY LOAM	0.8 - 0.6	FI-FIRM	S-STICKY
FS-FOOT SLOPE		L-LOAM		VFI-VERY FIRM	VS-VERY STICKY
N-NOSE SLOPE	III	SI-SILT-	0.6 - 0.3	EFI-EXTREMELY FIRM	NP-NON-PLASTIC
H-HEAD SLOPE		SIL-SILT LOAM			SP-SLIGHTLY STICKY
CC-CONCLAVE SLOPE		CL-CLAY LOAM			P-PLASTIC
CV-CONVEX SLOPE		SCL-SANDY CLAY LOAM			VP-VERY PLASTIC
T-TERRACE		SICL-SILTY CLAY LOAM			
FP-FLOOD PLAN	IV	SIC-SILTY CLAY	0.4 - 0.1		
		C-CLAY			
		SC-SANDY CLAY			

STRUCTURE
 SG-SINGLE GRAIN
 M-MASSIVE
 CR-CRUMB
 GR-GRANULAR
 SBK-SUBANGULAR BLOCKY
 ABK-ANGULAR BLOCKY
 PL-PLATY
 PR-PRISMATIC

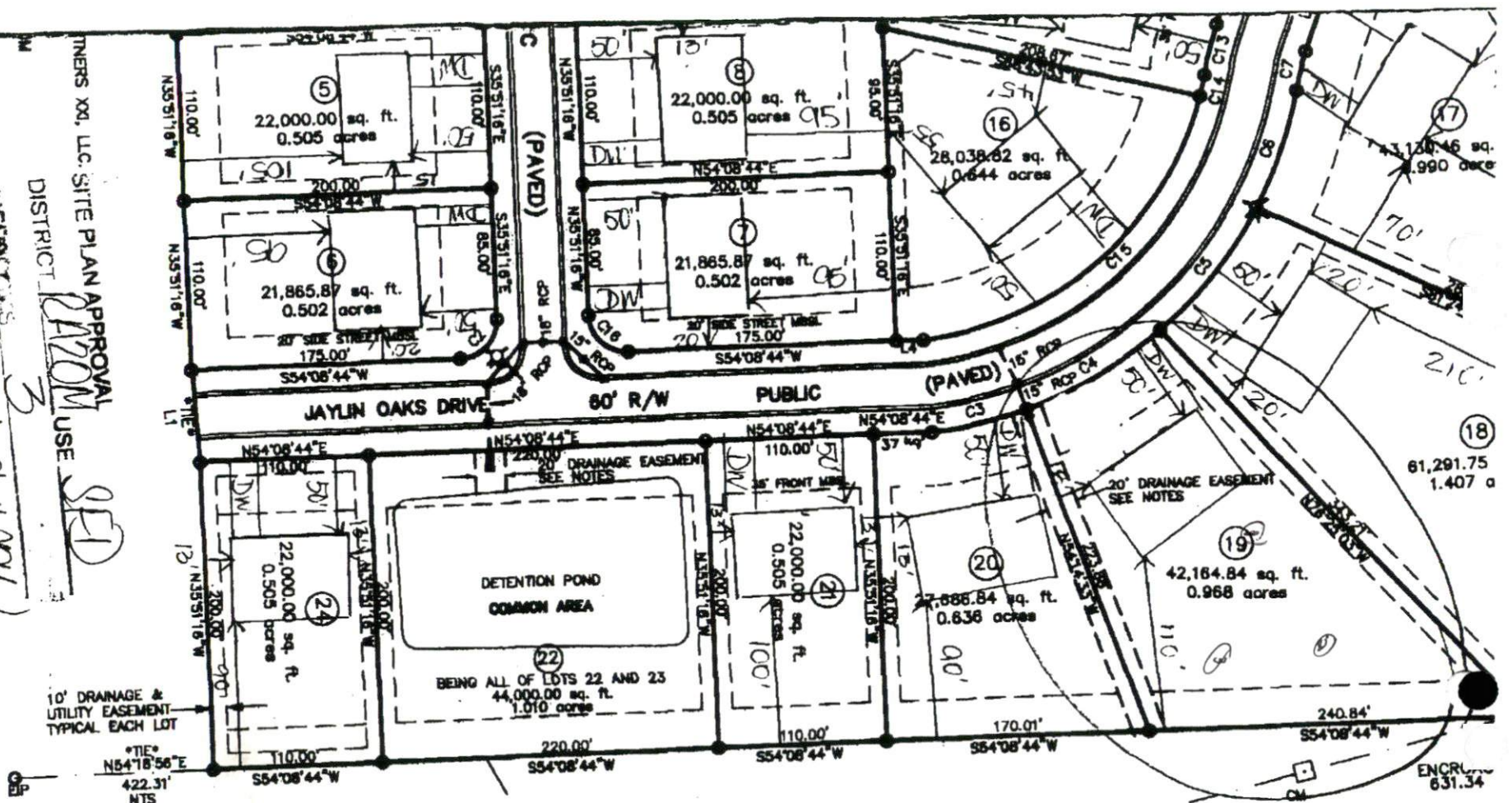
MINERALOGY
 SLIGHTLY EXPANSIVE
 EXPANSIVE

Show profile locations and other site features (dimensions, reference or benchmark, and North).



TNERS XXI, LLC. SITE PLAN APPROVAL
DISTRICT 2120M USE

01708 414000



10' DRAINAGE & UTILITY EASEMENT TYPICAL EACH LOT

LOUISE MCLAUGHLIN
302-484
0513-44-8786
ZONED - RA-20M

PLANNING DEPARTMENT
HARRIS COUNTY
This map/plan was presented to the Planning Commission
on the 15th day of Sept. 2005 at 9:56 AM.
2005-781
A.
Signature: *Clara M. Lee*
City Planning Director of Harris County

NATALIE J. & RON
1172-4
0513-55-
ZONED - F

LEGEND:
EIP --- EXISTING IRON PIN
IPS --- IRON PIN SET
CM --- PROPOSED CONCRETE MARK
--- FIRE HYDRANT